

EARTHWORKS

Natural stone – millions of years in the making



(S)
ORIGINALSTYLE



Natural Stone

The beauty and sheer versatility of natural stone – from marble to slate, limestone to granite – has been admired for many thousands of years

Its strength and adaptability has been used to build everything from basic dwellings to soaring temples, for floors and walls, as sculptures and roof tiles. Once it was the only building material available, but now, even with the availability of many different materials, stone is still as popular as ever for a wall or floor covering. Stone is quarried from where it has lain for millions of years, cut out from veins or strata and then shaped into blocks. It is further worked and finished according to its intended final use – polished, brushed, honed or tumbled. Each process reveals unique characteristics dependant on the rock from which it originated (see below).

If you are looking for something beautiful and unique to enhance walls and floors, natural stone is the obvious answer. Long lasting, durable, cost effective and versatile, it's also at home with other materials and textures such as wood, metal, glass, ceramic and porcelain. Different colours and finishes, and inherent features of veining and mottling are an interior designer's dream.

From kitchens to wet rooms, from a conservatory floor to a feature wall – for enduring quality and fantastic good looks, Earthworks tiles are the natural choice for modern and traditional styles alike.

Contents

Natural Stone

Travertine	4 - 15
Limestone	16 - 38
Sandstone	39
Tumbled Marble	40 - 45
Marble	43 - 57
Granite	58 - 61
Basalt	62 - 63
Natural Slate	64 - 69
Terracotta	70 - 71
Sinks	72 - 73

Mosaics

Marble Mosaics	74 - 77
Mosaics 10mm-48mm	78 - 85
Brickbond Mosaics	86 - 87
Pattern Mosaics	88
Splitface Mosaics	89
Rustic & Pebble Mosaics	90 - 91
Linear & Strata Mosaics	92 - 93
Medallions	94 - 95

Borders

Stone Mosaic Borders	96
Mixed Format Borders	97
Dados & Trims	98 - 101
Pattern Guides	102 - 103
Important Information	104 - 113

Please read prior to purchase

There are three kinds of rock types:

Igneous – solidified magma or lava formed after volcanic activity. Extremely hard.
Examples: granite, basalt.

Sedimentary – weathering of existing rocks produced sediment which settled in layers and gradually 'lithified' (turned to stone) by compaction and cementation.
Examples: limestone, travertine.

Metamorphic – Metamorphism is the transformation of one rock type into another, brought about by heat, pressure or chemically active fluids.
Examples: Marble (originally limestone or dolostone), slate (previously sedimentary shale or mudstone).

Textures, finishes and formats:

Brushed – the stone's surface is brushed with rotary diamond pads, resulting in a textured finish to the surface and rounded edges.

Cushioned, pillowed – where the straight edges of a tile have been rounded and softened.

Filled – where voids, pits and holes (a natural characteristic of some stone) have been filled with a resin to create a smooth surface.

Honed – a machine process which results in a smooth, matt surface.

Lightly polished – the surface is polished to a softly reflective sheen rather than a high gloss.

Polished – where the surface is buffed by machine, resulting in an even, smooth and highly reflective surface.

Tumbled – the surfaces of the stone have been textured, worn and weathered by contact with abrasive materials.

Unfilled – where the pits and voids within travertine tiles have not been filled. These can be grout-filled during installation.

Bevel format – the tile has been cut to create angled edges that slope away from the flat top surface.

Front cover: Viano White Marble. **Floor:** Polished 61 x 31cm.

Walls: Polished Chair Rail 305 x 65cm, Polished Brick 15 x 8cm, Polished Bevel Mosaic, Polished Skirting



Umbrian Classic Filled and Honed 61 x 30.5cm

Travertine

Travertine is a form of sedimentary limestone, made from compressed deposits left by calcite-rich hot springs which became, over millions of years, almost like a river frozen in time

It is usually pale, in tones from off-white to bronze, with some inherent pits and holes which are the result of its creation. Because of its marble-like qualities, travertine has been prized by sculptors for centuries.

There are three different grades of travertine, dependent on the quality, thickness, impurities, and sizes of pits and voids. Grade 1 is the best, and, as with all things, it is worth paying extra for a better quality stone that will last for years if installed and maintained correctly.

All of Original Style's travertine (except Umbrian Classic, see below) is selected from Grade 1 to ensure a consistent quality and excellent visual appearance.

In this section you will find a wide choice of sizes and finishes – nearly all suitable for internal walls and floors, showers and hearths. However we do not recommend that travertine is installed externally due to its porous nature which makes it susceptible to frost damage.

Please bear in mind that as travertine is a natural product with voids and pinholes, these can sometimes appear on the surface of the tiles after installation and use. No guarantees can be given against this happening. Any voids that do appear can be refilled using grout or epoxy resin, and we suggest that this work is carried out at the same time as the floor is given a thorough clean before being resealed – this is usually recommended as an annual task.

Umbrian Classic

Subtly pale in colour, rustic in texture, Umbrian Classic is our most cost-effective travertine for covering floors.

Please note this travertine is a graded selection which is suitable for residential areas.

Finish

Filled & Honed (2 sizes)

See page 14 for colour swatches, sizes and usage information

Types of Travertine

Unfilled - There are tiny irregularities pitting the surface, and these have been left for a natural effect.

Filled - Any pits and small holes have been filled by resin to give a clean, smooth finish.

Tumbled - The surface and edges have been textured, worn and weathered.

Honed - Has a smooth matt surface.

Chipped edge - For an antiqued look.

Lightly polished - A soft sheen.

Vein Cut - Cut through the vein rather than across, this changes its appearance and texture.
(Not suitable for floors or hearths)



Umbrian Gold Filled and Honed 90 x 60cm

Umbrian Gold

Equally at home in either traditional or contemporary settings, the soft yellows in Umbrian Gold harbour echoes of pale sunlight.

Finishes

Filled & Honed (7 sizes)

Filled & Lightly Polished (1 size)

Filled & Lightly Polished Vein Cut (1 size)

Unfilled & Honed (6 sizes)

Unfilled & Honed with Chipped Edge (5 sizes)

See page 14 for colour swatches, sizes and usage information

Umbrian Gold Octagon Dot

Octagon Dot – a classic geometric design.

You can use any 10 x 10cm tile as the dot in the pattern to achieve different looks. You will need to order one dot tile for each octagon tile.

Finishes

Chipped Edge (1 size)

Diamond Sawn & Filled (1 size)



Umbrian Gold Filled and Honed Octagon Dot Noce 40.6 x 40.6cm and 10 x 10cm

▼ Byzantine Bronze

As a contrast to Umbrian Gold, Byzantine Bronze is an example of a darker coloured 'noce' or 'walnut' travertine. All three finishes in all sizes can be used for walls and floors.

The tumbled wall tiles in the picture (right) have been 'slurry grouted' when installed, which partially fills the surface irregularities and also softens the colour. See our fixing guide at www.originalstyle.com/guides for more details.

Finishes

Filled & Honed (4 sizes)

Tumbled (5 sizes)

Polished (1 size)

See page 15 for colour swatches, sizes and usage information



Byzantine Bronze Filled and Honed 40.6 x 20.3cm



Wall: Byzantine Bronze Tumbled 20 x 10cm **Floor:** Byzantine Bronze Tumbled 40.6 x 40.6cm



Ancient Ligurian 61 x 40.6cm



Ancient Ligurian

This handsome travertine is highly prized for its beauty. Its lightest tint of warm yellow is delicately veined. Each pillow-edged tile is hand-washed, which softens its surface and edges. Slightly darker than Levantine Ivory, it is also unfilled and can be slurry grouted if required.

Finish

Unfilled & Pillow Edged (4 sizes)

See page 14 for colour swatches, sizes and usage information



Levantine Ivory

Levantine Ivory's subtlety is an effect of tumbling. After being quarried and cut, the pieces are processed tumbling water, sand and stone against stone, much like nature – but quicker. This results in softened edges, mellowed shades and an antiqued, worn finish. You can leave the tiles unfilled or they can be slurry grouted.

Finish

Tumbled, Unfilled & Honed
(8 sizes)

See page 14 for colour swatches,
sizes and usage information

Levantine Ivory Unfilled 61 x 40.6cm, 40.6 x 40.6cm, 40.6 x 20.3cm, 20.3 x 20.3cm, 20 x 10cm



Levantine Ivory Unfilled 20 x 10cm

Levantine Ivory Manor Set

We have combined various sizes of Levantine Ivory into this set, which can be laid out in various pleasing patterns. There are some suggestions on pages 102-103, or you can design your own to complement and fit individual rooms.

There are 12 pieces per set,
1 set is 3.348 square metres.

Finishes

Unfilled & Tumbled

12 pieces (4 sizes)

See page 14 for colour
swatches, sizes and
usage information





Travertine



Levantine Ivory
Unfilled & Tumbled

91.5 x 61 x 1.5cm	EW-LIV91X61
61 x 40.6 x 1.2cm	EW-LIV60X40
40.6 x 40.6 x 1.2cm	EW-LIV40X40
40.6 x 20.3 x 1.2cm	EW-LIV40X20
20.3 x 20.3 x 1.2cm	EW-LIV20X20
30 x 10 x 1.0cm	EW-LIV30X10
20 x 10 x 1.2cm	EW-LIV20X10
15 x 7.5 x 1.0cm	EW-LIV15X7



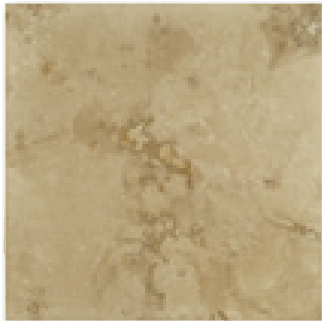
Levantine Ivory Manor Set
Unfilled & Tumbled EW-LIVMNSSET

2 of 91.5 x 61 x 1.5cm
4 of 61 x 61 x 1.5cm
2 of 61 x 30.5 x 1.5cm
4 of 30.5 x 30.5 x 1.5cm
(1 set = 3.348 square metres)



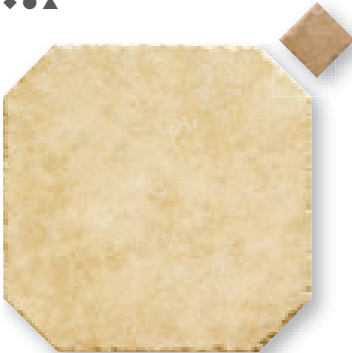
Ancient Ligurian
Unfilled & Pillow Edged

61 x 40.6 x 1.2cm	EW-AL60X40
40.6 x 40.6 x 1.2cm	EW-AL40X40
40.6 x 20.3 x 1.2cm	EW-AL40X20
20.3 x 20.3 x 1.2cm	EW-AL20X20



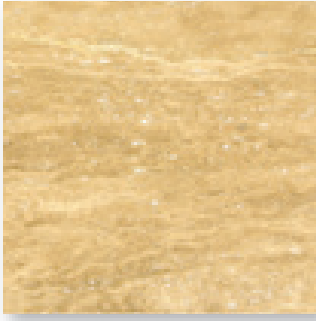
Umbrian Classic
Filled & Honed

61 x 30.5 x 1.2cm	EW-UC61X30
30.5 x 30.5 x 1.2cm	EW-UC30X30



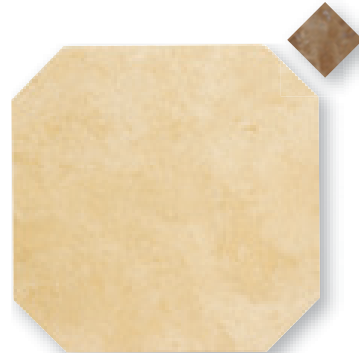
Umbrian Gold Octagon Dot
Chipped Edge Octagon Dot Noce

40.6 x 40.6 x 1.2cm	EW-UGFOCTCE
10 x 10 x 1.2cm	EW-OCTDCE



Umbrian Gold
Vein Cut Lightly Polished Filled & Honed

61 x 30.5 x 1.2cm	EW-UGVP60X30-A
-------------------	----------------



Umbrian Gold Octagon Dot
Filled & Honed Octagon Dot Noce

40.6 x 40.6 x 1.2cm	EW-UGFOCT
10 x 10 x 1.2cm	EW-OCTDDS



Umbrian Gold
Filled & Lightly Polished

91.4 x 30.5 x 1.2cm	EW-UGFP90X30-A
---------------------	----------------

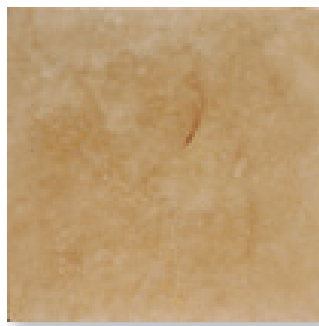


NB: you will need to order one 'dot' tile for each octagon tile.



Umbrian Gold
Unfilled & Honed with Chipped Edge

61 x 40.6 x 1.2cm	EW-UG60X40CE-A
40.6 x 40.6 x 1.2cm	EW-UG40X40CE-A
40.6 x 20.3 x 1.2cm	EW-UG40X20CE-A
30.5 x 30.5 x 1.2cm	EW-UG30X30CE-A
20.3 x 20.3 x 1.2cm	EW-UG20X20CE-A



Umbrian Gold
Filled & Honed

90 x 60 x 1.2cm	EW-UGF90X60
61 x 61 x 1.2cm	EW-UGF61X61
61 x 40.6 x 1.2cm	EW-UGF60X40-A
40.6 x 40.6 x 1.2cm	EW-UGF40X40-A
40.6 x 20.3 x 1.2cm	EW-UGF40X20-A
30.5 x 30.5 x 1.2cm	EW-UGF30X30-A
20.3 x 20.3 x 1.2cm	EW-UGF20X20-A



Umbrian Gold
Unfilled & Honed Diamond Sawn

61 x 61 x 1.2cm	EW-UG61X61DS
61 x 40.6 x 1.2cm	EW-UG60X40DS-A
40.6 x 40.6 x 1.2cm	EW-UG40X40DS-A
40.6 x 20.3 x 1.2cm	EW-UG40X20DS-A
30.5 x 30.5 x 1.2cm	EW-UG30X30DS-A
20.3 x 20.3 x 1.2cm	EW-UG20X20DS-A



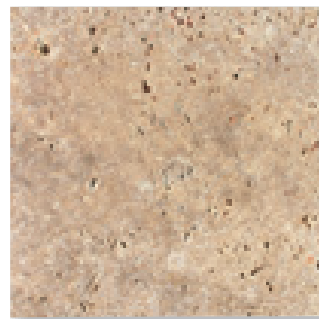
Byzantine Bronze
Polished

30.5 x 30.5 x 1.2cm	EW-BBP30X30
---------------------	-------------



Byzantine Bronze
Filled & Honed

61 x 40.6 x 1.2cm	EW-BBF61X40
40.6 x 40.6 x 1.2cm	EW-BBF40X40
40.6 x 20.3 x 1.2cm	EW-BBF40X20
20.3 x 20.3 x 1.2cm	EW-BBF20X20



Byzantine Bronze
Tumbled

61 x 40.6 x 1.0cm	EW-BBT60X40
40.6 x 40.6 x 1.0cm	EW-BBT40X40
40.6 x 20 x 1.0cm	EW-BBT40X20
20 x 20 x 1.0cm	EW-BBT20X20
20 x 10 x 1.0cm	EW-BBT20X10



Key To Symbols

Durability

- 1 Heavy Traffic:** very hard, suitable for most commercial installations.
- 2 Medium Traffic:** suitable for light commercial and residential installations.
- 3 Light Traffic:** suitable for residential use only.
- 4 Very light traffic:** suitable for light residential use e.g. bathroom floors.

3 Durability

B Colour Variation

Internal

Floors

Walls

Hearths

Colour variation

- A Limited:** relatively uniform but slight variations possible.
- B Moderate:** background colour generally has some variations.
- C Considerable:** variegated in colour and/or veining. Allowances for blending during installation are strongly recommended.

Special notes

- White adhesive recommended.
- ◆ Sealing required.
- ▲ Polished. Polished stone has less slip resistance when wet than unpolished stone.

Shower/Wet Room Walls

Special Notes

Limestone

Sedimentary layers of shells and micro-skeletons were deposited on the seabed, then compressed into the hard rock you see today

The options offered by limestone have ensured its popularity for thousands of years – it was used for entrances, atriums and dining rooms at Pompeii.

Now you can create your own lasting impression with limestone, which is available in colours from white through to deep black.

Lascaux

The colour of cream, Lascaux is cool and smooth. Available as polished and honed in two thicknesses, Lascaux will grace floors and walls alike.

Finishes

Honed (3 sizes, 2 thicknesses)

Polished (3 sizes)

See page 35 for colour swatches, sizes and usage information



St Sernin

Warm, mellow tones and tumbled weathered edges and surface make St Sernin an extremely attractive choice for any number of locations. Look very closely and you will see the fossils of tiny shells embedded within the stone.

Finishes

Tumbled (3 sizes)

Also available as a mixed set
of 6 pieces in 4 sizes

See page 37 for colour swatches,
sizes and usage information





Vosges Honed 60 x 30cm with Black Athenian Diamond Border (see page 92)



Vosges

White will never go out of fashion – that's because it is crisp and stylish on its own, and also effective as a backdrop for other colours and textures. This is the definition for Vosges too, which is available as polished for walls and honed for floors.

Finishes

Honed (2 sizes)
Polished (2 sizes)



Dolomite White

This limestone is a cool white stone that lightens and seems to enlarge inner space by reflecting light.

Finishes

Honed (4 sizes)
Polished (1 size)

See page 34 for colour swatches, sizes and usage information



Wall: Dolomite White Honed 60 x 40cm, Polished 30 x 20cm **Floor:** Dolomite White Honed 60 x 40cm, 40 x 20cm, 20 x 20cm



St Vallier 40 x 40cm, 60 x 40cm and 80 x 40cm



St Vallier

St Vallier is a beautiful creamy coloured limestone. For large expanses of floor, why not combine the three sizes together (as shown left).

Finish

Tumbled (3 sizes).

See page 36 for colour swatches, sizes and usage information.



Wall: Alexandrian Sun 40 x 20cm, with Stone Mosaic Brickbond Bottocino Tumbled and Bullnose Bottocino Trim (see pages 86 and 99) **Floor:** Alexandrian Sun 40 x 40cm



Alexandrian Sand 60 x 40cm

Alexandrian

Tones of palest buttermilk relieved by generous scatterings of minute fossils, little bigger than grains of rice.

Sun

Finish: Honed (4 sizes)

Cream

Finish: Brushed (4 sizes)

Sand

Finish: Honed (4 sizes)

Desert

Finish: Brushed (4 sizes)

See page 37 for colour swatches, sizes and usage information



Alexandrian Cream 60 x 60cm, 60 x 40cm, 40 x 40cm, 40 x 20cm



Massif

Make a grand entrance with a large expanse of Massif. Used in smaller spaces the polished stone will still reflect and shine, whilst the honed version offers a smooth, serene surface.

Finishes

Honed (2 sizes)

Polished (2 sizes)

See page 34 for colour swatches, sizes and usage information



Wall: Massif Polished 61 x 30.5cm with Chic Noce Mosaic on curved wall (see page 92) **Floor:** Massif Honed 30.5 x 30.5cm



Brushed Galilean 60.5 x 40cm

Brushed Galilean

The colour of sun-bleached desert sand, this limestone comes from the same source as rock used in countless buildings around the inland Sea of Galilee since Biblical times. Use it in your home for a timeless, understated look.

Finish

Brushed (4 sizes)

See page 36 for colour swatches and usage information



Polished Old Aquitaine 60 x 40cm

Old Aquitaine

Also known as Jerusalem stone, Old Aquitaine is cool and neutral in tone with a soft cream tint. This much sought after, premium stone is suitable for all internal walls and floors.

Finishes

Brushed (3 sizes)

Polished (3 sizes)

See page 36 for colour swatches, sizes and usage information



Ardennes Polished 60 x 30cm with Chic Botticino Travertine Polished Mosaic (see page 92)

Ardennes

Use Ardennes on its own on either wall or floor and it will look stunning. Teamed with tiles in different tones it will reflect some of the characteristics and colours of the other tiles. These 30 x 10cm brick tiles are a popular choice for kitchen walls. They are available in a Polished and a Honed finish.

Finishes

Honed (3 sizes, 2 thicknesses)

Polished (3 sizes)

See page 35 for colour swatches, sizes and usage information



Ardennes Honed 30 x 10cm

Chalon Tumbled Octagon

The octagon dot is a classic configuration for hallways, living/dining rooms and kitchens. Team the octagon tile with the coordinating tumbled black marble 'dot'.

Finish

Chalon's tumbled surface gives it an elegant, aged look.

See page 36 for colour swatches, sizes and usage information







Correlas Brushed 60 x 30cm shown with Stovax wood burning stove

Correlas Gris

This darkish limestone is available in three finishes and different sizes, making it a versatile option for walls and floors and a number of different room types. Its warm shade makes it suitable for living spaces as well as bathrooms, kitchens and hallways.

Finishes

Brushed (1 size), Honed (3 sizes),
Polished (3 sizes)

See page 36 for colour swatches, sizes and usage information

Greyfriars Abbey

A dark grey limestone with an antiqued surface and rustic edge. At 2cm thick it isn't suitable for walls, however it is extremely durable for floors in areas of high traffic such as kitchens, entrance halls, boot rooms and utility rooms. Turn the page for the Greyfriars Abbey Set.

Finish

Tumbled and antiqued (1 set, 2 sizes)

See page 37 for colour swatches, sizes and usage information



Greyfriars Abbey 55 x 28cm

Greyfriars Abbey Set

Rustic, tumbled pieces of dark limestone that look like aged flagstones. Use to create a dramatic effect in kitchens and conservatories, halls patios and bathrooms. See pages 102-103 for pattern guidelines, or you can design your own pattern layout to fit your individual room.

Please note that, because of its dark colour, surface scratching from usage may appear. These will blend in with use and over time.

Finish

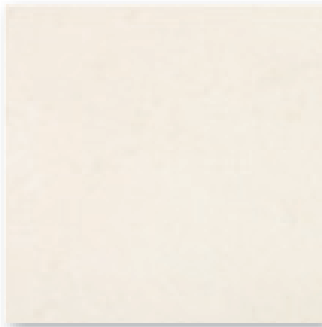
Tumbled & Antiqued, sold in a set.
A set consists of 12 pieces, 4 sizes
1 set = 2.717 square metres.
See page 36 for colour swatch,
sizes and usage information





Floor: Greyfriars Abbey Set, shown here treated with antique oil **Wall:** Winchester Tile Company Residence Range Cosmopolitan half tiles in China White

Limestone



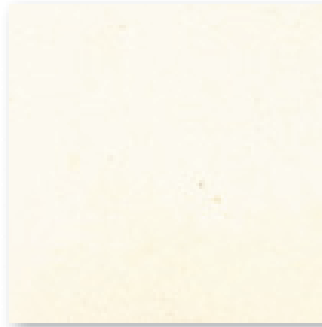
Dolomite White
Honed

60 x 40 x 1.2cm EW-DW60X40

40 x 40 x 1.2cm EW-DW40X40

40 x 20 x 1.2cm EW-DW40X20

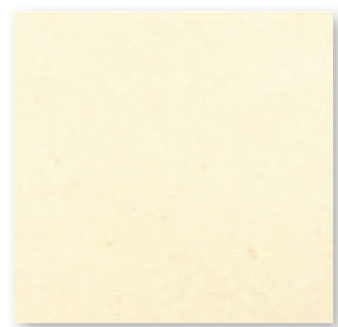
20 x 20 x 1.2cm EW-DW20X20



Vosges
Honed

60 x 30 x 1.2cm EW-VOS60X30

30 x 30 x 1.2cm EW-VOS30X30



Massif
Honed

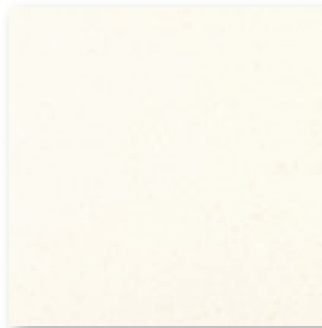
61 x 30.5 x 1.2cm EW-MAS61X30

30.5 x 30.5 x 1.2cm EW-MAS30X30



Dolomite White
Polished

30 x 20 x 1.2cm EW-DWP30X20



Vosges
Polished

60 x 30 x 1.2cm EW-VOSP60X30

30 x 30 x 1.2cm EW-VOSP30X30

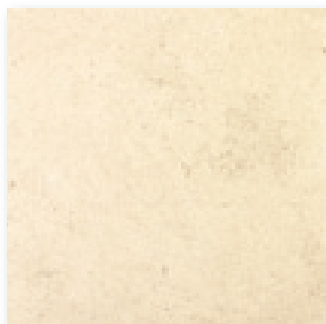


Massif
Polished

61 x 30.5 x 1.2cm EW-MASP61X30

30.5 x 30.5 x 1.2cm EW-MASP30X30



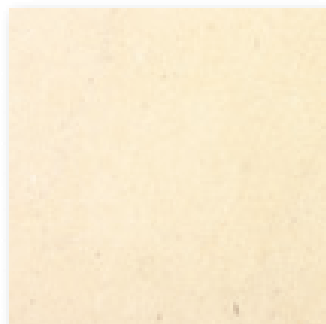


Lascaux Polished

60 x 30 x 1.0cm *EW-LASP60X30*

30 x 30 x 1.0cm *EW-LASP30X30*

30 x 10 x 1.0cm *EW-LASP30X10*

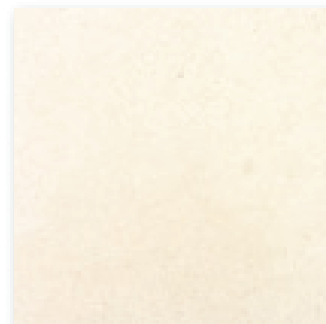


Lascaux Honed

60 x 30 x 1.5cm *EW-LASHF60X30*

30 x 30 x 1.5cm *EW-LASHF30X30*

30 x 10 x 1.0cm *EW-LASH30X10*

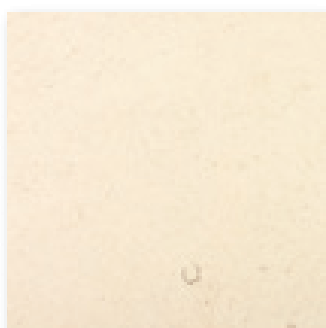


Lascaux Honed

60 x 30 x 1.0cm *EW-LASH60X30*

30 x 30 x 1.0cm *EW-LASH30X30*

30 x 10 x 1.0cm *EW-LASH30X10*

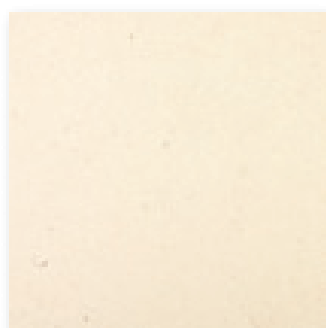


Ardennes Polished

60 x 30 x 1.0cm *EW-ARDP60X30*

30 x 30 x 1.0cm *EW-ARDP30X30*

30 x 10 x 1.0cm *EW-ARDP30X10*

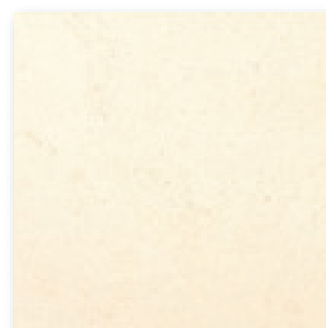


Ardennes Honed

60 x 30 x 1.5cm *EW-ARDHF60X30*

30 x 30 x 1.5cm *EW-ARDHF30X30*

30 x 10 x 1.0cm *EW-ARDH30X10*



Ardennes Honed

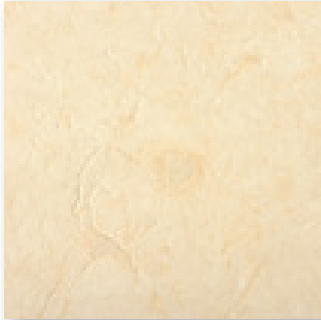
60 x 30 x 1.0cm *EW-ARDH60X30*

30 x 30 x 1.0cm *EW-ARDH30X30*

30 x 10 x 1.0cm *EW-ARDH30X10*



Limestone



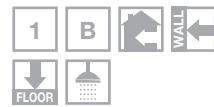
Old Aquitaine
Brushed

60.5 x 40 x 1.5cm	EW-OA60X40
40 x 40 x 1.5cm	EW-OA40X40
30 x 30 x 1.5cm	EW-OA30X30



Old Aquitaine
Polished

60 x 40 x 1.5cm	EW-OAP60X40
60 x 30 x 1.2cm	EW-OAP60X30
40 x 40 x 1.5cm	EW-OAP40X40



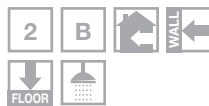
Galilean
Brushed

60.5 x 40 x 1.5cm	EW-BG60X40
40 x 40 x 1.5cm	EW-BG40X40
40 x 20 x 1.5cm	EW-BG40X20
20 x 20 x 1.5cm	EW-BG20X20



St Vallier
Tumbled

80 x 40 x 1.5cm	EW-STVAL80X40
60 x 40 x 1.5cm	EW-STVAL60X40
40 x 40 x 1.5cm	EW-STVAL40X40



Chalon Octagon
Tumbled

40 x 40 x 1.5cm	EW-CHALOC
-----------------	-----------

Negra Black Marble Dot
Brushed

10 x 10 x 1.0cm	EW-NEGT10X10
-----------------	--------------

NB: You will need to order one
'dot' tile for each octagon tile



St Semin
Tumbled

80 x 40 x 1.5cm	EW-STSER80X40
60 x 40 x 1.5cm	EW-STSER60X40
40 x 40 x 1.5cm	EW-STSER40X40



St Semin Mixed Set
Tumbled EW-STSERMTS

1 of 60 x 40 x 1.5cm
2 of 40 x 40 x 1.5cm
1 of 40 x 20 x 1.5cm
2 of 20 x 20 x 1.5cm

(1 set = 0.72 square metres) Please see pages 98-99 for more pattern guide ideas.



Alexandrian Sun
Honed

60 x 60 x 1.5cm	EW-AXSUN60X60
60 x 40 x 1.5cm	EW-AXSUN60X40
40 x 40 x 1.5cm	EW-AXSUN40X40
40 x 20 x 1.5cm	EW-AXSUN40X20



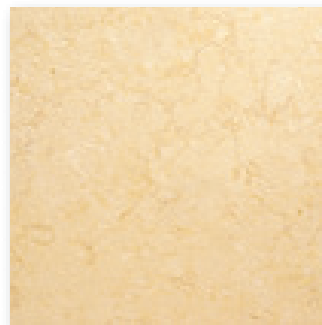
Alexandrian Sand
Honed

60 x 60 x 1.5cm	EW-AXSND60X60
60 x 40 x 1.5cm	EW-AXSND60X40
40 x 40 x 1.5cm	EW-AXSND40X40
40 x 20 x 1.5cm	EW-AXSND40X20



Alexandrian Cream
Brushed

60 x 60 x 1.5cm	EW-AXCRM60X60
60 x 40 x 1.5cm	EW-AXCRM60X40
40 x 40 x 1.5cm	EW-AXCRM40X40
40 x 20 x 1.5cm	EW-AXCRM40X20

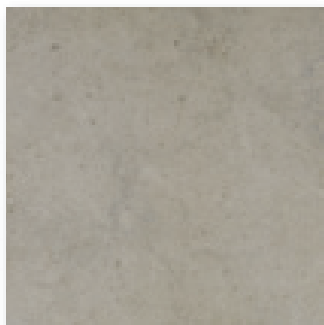


Alexandrian Desert
Brushed

60 x 60 x 1.5cm	EW-AXDES60X60
60 x 40 x 1.5cm	EW-AXDES60X40
40 x 40 x 1.5cm	EW-AXDES40X40
40 x 20 x 1.5cm	EW-AXDES40X20



Limestone



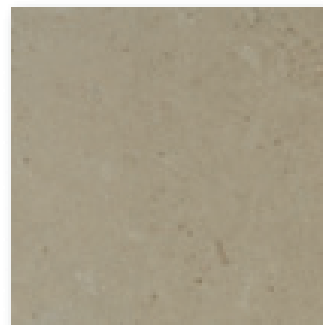
Correlas
Honed

60 x 30 x 1.0cm *EW-CRSH60X30*
30 x 30 x 1.0cm *EW-CRSH30X30*
30 x 10 x 1.0cm *EW-CRSH30X10*



Correlas
Polished

60 x 30 x 1.0cm *EW-CRSP60X30*
30 x 30 x 1.0cm *EW-CRSP30X30*
30 x 10 x 1.0cm *EW-CRSP30X10*



Correlas
Brushed

60 x 30 x 1.0cm *EW-CRSB60X30*



Greyfriars Abbey

82.5 x 55 x 2.2cm *EW-GREYAB83X55*
55 x 27.35 x 2.2cm *EW-GREYAB55X28*



Greyfriars Abbey Set
Tumbled *EW-GREYABSET*

2 of 82.5 x 55 x 2.2cm
4 of 55 x 55 x 2.2cm
2 of 55 x 27.35 x 2.2cm cm
4 of 27.35 x 27.35 x 2.2cm cm



Large Format Set (1 set = 2.71755 square metres). Please see pages 102-103 for more pattern guide ideas.

Key To Symbols

Durability

- 1 **Heavy Traffic:** very hard, suitable for most commercial installations.
- 2 **Medium Traffic:** suitable for light commercial and residential installations.
- 3 **Light Traffic:** suitable for residential use only.
- 4 **Very light traffic:** suitable for light residential use e.g. bathroom floors.

3 Durability

B Colour Variation

Internal

Floors

Colour variation

- A **Limited:** relatively uniform but slight variations possible.
- B **Moderate:** background colour generally has some variations.
- C **Considerable:** variegated in colour and/or veining. Allowances for blending during installation are strongly recommended.

Walls

Hearths

Special notes

- White adhesive recommended.
- ◆ Sealing required.
- ▲ Polished. Polished stone has less slip resistance when wet than unpolished stone.

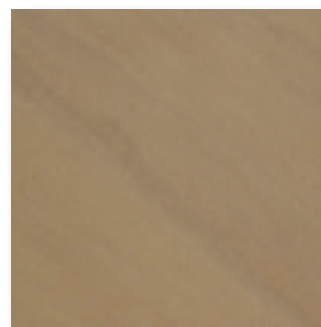
Shower/Wet Room Walls

Special Notes

Sandstone

You would be forgiven for thinking that sandstone was made from sand

Not so. Sandstone is a sedimentary rock composed mainly of sand-size mineral or rock grains and is composed for the most part of quartz (which lends the stone its glossy lustre).



Mulhacen

Brushed

30 x 30 x 1.2 cm *EW-MUL30X30*



Mulhacen

A muted, golden beige with hidden depths. Look deeper than the almost warm-to-the-touch brushed surface and you will see billowing clouds of grey from some ancient storm.

Finish

Honed (1 size)



Tumbled Marble

Marble is a crystalline, metamorphic rock that was once originally limestone

Sometimes impurities in the original limestone caused colours or banding to appear in the marble as it formed and these have always been highly prized for floors and claddings. The various pieces featured in our Tumbled Marble section have been cut into tiles and carefully tumbled in drums to soften and age the edges and surfaces. Colours range from subtle whites and creams to dark grey.

Tumbled Marble Beige

(5 sizes)

Some Tumbled Marbles are available in a range of sizes including large format, and some are only available as 10 x 10cm. See page 45 for colour swatches, sizes and usage information.



Floor: Tumbled Marble Beige 30.5 x 30.5cm **Wall:** Tumbled Marble Beige 10 x 10cm





Tumbled Marble Botticino 61 x 40cm

Bottocino

This pale softly tumbled marble looks beautiful on walls and floors, and will complement any style of décor, from shabby chic to strictly classical.

Finish

Tumbled (6 sizes)

See page 45 for colour swatches, sizes and usage information



Tumbled Marble Bottocino 30.5 x 30.5cm, Meseta Mosaic Border (see page 96)

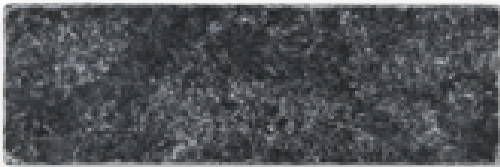
Tumbled Marble



Negra Black Tumbled Marble 23 x 7.5cm shown with Romanesque tiles from the Odyssey Collection

Negra Black

The brick format of Negra Black makes it a very versatile addition to this range.



Negra Black

Tumbled

23 x 7.5 x 1.0cm EW-NEGT23X7

10 x 10 x 1.0cm EW-NEGT10X10





Bottocino
Tumbled

61 x 40.6 x 1.2cm	EW-TMBOTT60X40
40.6 x 40.6 x 1.0cm	EW-TMBOTT40X40
30.5 x 30.5 x 1.0cm	EW-TMBOTT30X30
20 x 20 x 1.0cm	EW-TMBOTT20X20
15 x 7.5 x 1.0cm	EW-TMBOTT15X7
10 x 10 x 1.0cm	EW-TMBOTT
10 x 10 x 14 x 1.0cm	EW-TMBOTTTR (Triangle)



Bianco
Tumbled

40.6 x 40.6 x 1.0cm	EW-TMBIANCO40X40
30.5 x 30.5 x 1.0cm	EW-TMBIANCO30X30
20 x 20 x 1.0cm	EW-TMBIANCO20X20
10 x 10 x 1.0cm	EW-TMBIANCO



Beige
Tumbled

61 x 40.6 x 1.2cm	EW-TMBEIGE61X40
40.6 x 40.6 x 1.2cm	EW-TMBEIGE40X40
30.5 x 30.5 x 1.2cm	EW-TMBEIGE30X30
20 x 20 x 1.2cm	EW-TMBEIGE20X20
15 x 7.5 x 1.0cm	EW-TMBEIGE15X7
10 x 10 x 1.0cm	EW-TMBEIGE



Rosa
Tumbled

10 x 10 x 1.0cm	EW-TMROSA
-----------------	-----------



Mica Mix
Tumbled

10 x 10 x 1.0cm	EW-TMMICA
-----------------	-----------



Scabos
Tumbled

10 x 10 x 1.0cm	EW-TMSCABOS
-----------------	-------------



Travertine
Tumbled

10 x 10 x 1.0cm	EW-TMTRAV
-----------------	-----------



Grigio
Tumbled

10 x 10 x 1.0cm	EW-TMGRIG
-----------------	-----------



Giallo
Tumbled

10 x 10 x 1.0cm	EW-TMGIALLO
-----------------	-------------



Red
Tumbled

10 x 10 x 1.0cm	EW-TMRED
-----------------	----------



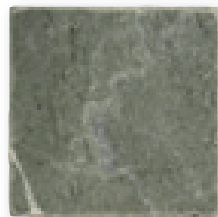
Rosso
Tumbled

10 x 10 x 1.0cm	EW-TMROSSO
-----------------	------------



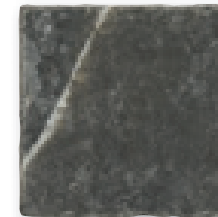
Noce
Tumbled

10 x 10 x 1.0cm	EW-TMNOCE
-----------------	-----------



Verde
Tumbled

10 x 10 x 1.0cm	EW-TMVERDE
-----------------	------------



Nero
Tumbled

10 x 10 x 1.0cm	EW-TMNERO
10 x 10 x 14 x 1.0	EW-TMNEROTR (Triangle)



Marble

The ancients knew all about marble – the word comes from the Latin ‘marmora’ – and they prized it above all other rock for their works of art

The Venus di Milo was carved by an unknown Greek sculptor from pure white marble, quarried on the island of Paros. All marble starts life as limestone, but great pressure transforms it into a hard, crystalline rock that can be worked and polished. White in its pure form, impurities form veins of many colours and make each slab unique.

Sometimes veins in the stone can look like faults, but do not worry, these are an inherent characteristic of marble and not signs of damage to the tiles.

▼ Sorrento

A fine marble, quarried and then sawn to reveal the beautiful beige veining within its creamy depths, it's then polished for a highly reflective surface.

Finishes

Brushed (1 size)

Polished (5 sizes)

See page 57 for colour swatches, sizes and usage information



Sorrento Polished 40.6 x 20cm, Venetian Mosaic Vitoria 2.5 (see page 82)



Wall: Sorrento Polished 40.6 x 20cm **Bath:** Venetian Mosaic Bianco 1.0 (see page 80)



Viano White Marble. **Floor:** Polished 61 x 31. **Walls:** Polished Chair Rail 305 x 65, Polished Brick 15 x 8, Polished Bevel Mosaic, Polished Skirting



Viano White

Viano White is an exquisite, glistening white marble, with subtle veining effects throughout. With this collection you have the choice of Polished or Honed finishes and a variety of sizes and formats including bevelled, brick and brickbond mosaics. Pencil and chair rail trims are available to add the finishing touch to your installation – these can be found on page 101.

Veining effects are occasional inherent features of this natural stone. As each piece of marble is individually cut into the various formats of trims, flat tiles, bevel edged tiles and mosaics, there will be differences in shades, tones and vein effects. This might be more noticeable when flat tiles and the smaller cut pieces such as the brick and bevel formats and mosaics are placed adjacent to each other. They may not match exactly however the overall impression will be stunning.

Finishes

Polished (8 sizes)

Honed (8 sizes)

See page 54 for colour swatches, sizes and usage information



Salina Brick Bevel

Salina

There are interesting swirls and veining effects within this silvery grey toned marble. The bevelled format is a popular choice for kitchens and bathrooms.

As with Viano White (and the beige and brown hued Bellano), Salina is available in Polished or Honed finishes and various other sizes and formats, including flat tiles for walls in floors, brick tiles and brickbond mosaics. Pencil and chair rail trims are available too.

Finishes

Polished (8 sizes)

Honed (8 sizes)

See page 55 for colour swatches, sizes and usage information



Create the classic checkerboard effect with 30.5cm squares of Viano White Polished and Nero Black Polished – it will look beautiful in entrance halls, dining rooms and bathrooms.



Viano White

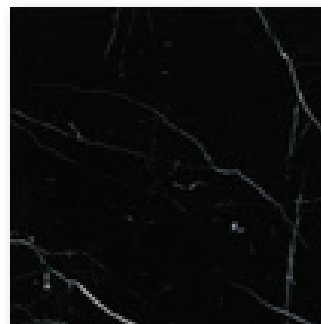
Polished

61 x 30.5 x 1.0cm *EW-VIAP61X31*

30.5 x 30.5 x 1.0cm *EW-VIAP31X31*

30.5 x 10 x 1.0cm *EW-VIAP31X10*

15 x 7.5 x 1.0cm *EW-VIAP15X8*



Nero

Polished

30.5 x 30.5 x 1.0cm *EW-NEROP31X31*



Constantia Gold

Dramatic gold and toffee tones and striking veining mean that Constantia Gold will be eye catching where ever it is placed. Like all of our marble, it is suitable for walls and floors, and hearths.

Finishes

Honed (1 size)

Polished (2 sizes)

See page 57 for colour swatches, sizes and usage information



Mica

Cool and elegant Mica is available in honed and polished finishes. There are a range of shades, all with a hint of greeny grey, and full of beautiful veining effects.

Finishes

Brushed (4 sizes)

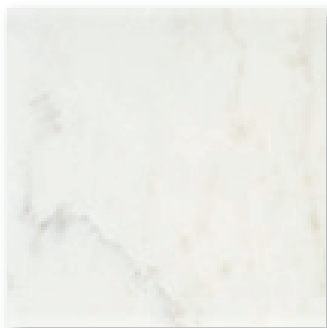
Polished (4 sizes)

See page 57 for colour swatches, sizes and usage information



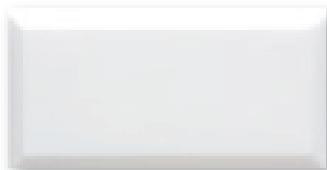
Mica Marble Polished 40.6 x 20cm, Tumbled Marble Mica Mix 10 x 10cm (see page 45)

Marble



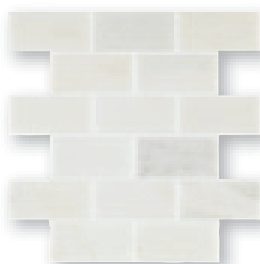
Viano White
Polished

61 x 30.5 x 1.0cm	EW-VIAP61X31
30.5 x 30.5 x 1.0cm	EW-VIAP31X31
30.5 x 10 x 1.0cm	EW-VIAP31X10
15 x 7.5 x 1.0cm	EW-VIAP15X8



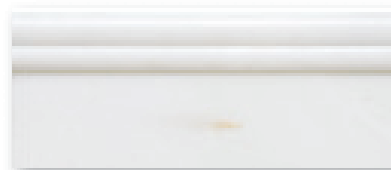
Viano White Brick Bevel
Polished

20 x 10cm	EW-VIAP20X10B
14.7 x 7.2cm	EW-VIAP15X8B



Viano White
Brickbond Mosaic
Polished

30.5 x 26.1cm	EW-VIAPBBMOS
---------------	--------------



Viano White Skirting
Polished

30.5 x 10 x 1.0cm	EW-VIAPSKRT
-------------------	-------------



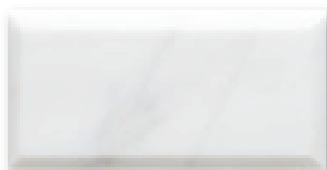
Viano White
Brickbond Bevel Mosaic
Polished

30.5 x 26.1cm	EW-VIAPBBMOSB
---------------	---------------



Viano White
Honed

61 x 30.5 x 1.0cm	EW-VIAH61X31
30.5 x 30.5 x 1.0cm	EW-VIAH31X31
30.5 x 10 x 1.0cm	EW-VIAH31X10
15 x 7.5 x 1.0cm	EW-VIAH15X8



Viano White Brick Bevel
Honed

20 x 10cm	EW-VIAH20X10B
14.7 x 7.2cm	EW-VIAH15X8B



Viano White
Brickbond Mosaic
Honed

30.5 x 26.1cm	EW-VIAHBBMOS
---------------	--------------



Viano White Skirting
Honed

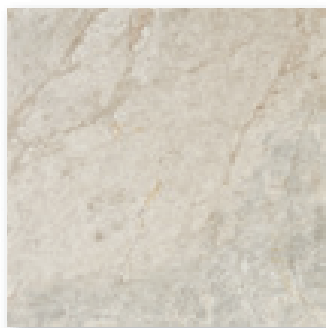
30.5 x 10 x 1.0cm	EW-VIAHSKRT
-------------------	-------------



Viano White
Brickbond Bevel Mosaic
Honed

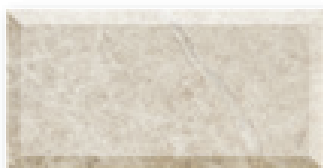
30.5 x 26.1cm	EW-VIAHBBMOSB
---------------	---------------

Marble



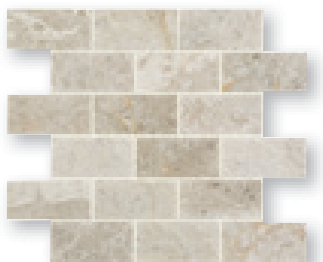
Salina Polished

61 x 30.5 x 1.0cm	<i>EW-SALP61X31</i>
30.5 x 30.5 x 1.0cm	<i>EW-SALP31X31</i>
30.5 x 10 x 1.0cm	<i>EW-SALP31X10</i>
15 x 7.5 x 1.0cm	<i>EW-SALP15X8</i>



Salina Brick Bevel Polished

20 x 10cm	<i>EW-SALP20X10B</i>
15 x 7.5cm	<i>EW-SALP15X8B</i>



Salina Brickbond Mosaic Polished

30.5 x 30cm	<i>EW-SALPBBMOS</i>
-------------	---------------------



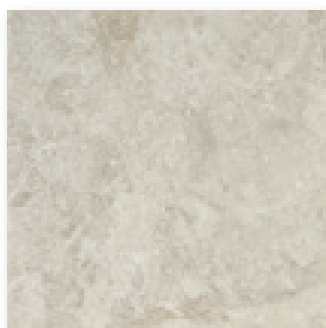
Salina Skirting Polished

30.5 x 10 x 1.0cm	<i>EW-SALPSKRT</i>
-------------------	--------------------



Salina Brickbond Bevel Mosaic Polished

30.5 x 30cm	<i>EW-SALPBBMOSB</i>
-------------	----------------------



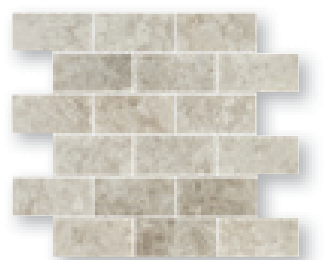
Salina Honed

61 x 30.5 x 1.0cm	<i>EW-SALH61X31</i>
30.5 x 30.5 x 1.0cm	<i>EW-SALH31X31</i>
30.5 x 10 x 1.0cm	<i>EW-SALH31X10</i>
15 x 7.5 x 1.0cm	<i>EW-SALH15X8</i>



Salina Brick Bevel Honed

20 x 10cm	<i>EW-SALH20X10B</i>
15 x 7.5cm	<i>EW-SALH15X8B</i>



Salina Brickbond Mosaic Honed

30.5 x 30cm	<i>EW-SALHBBMOS</i>
-------------	---------------------



Salina Skirting Honed

30.5 x 10 x 1.0cm	<i>EW-SALHSKRT</i>
-------------------	--------------------



Salina Brickbond Bevel Mosaic Honed

30.5 x 30cm	<i>EW-SALHBBMOSB</i>
-------------	----------------------

Marble



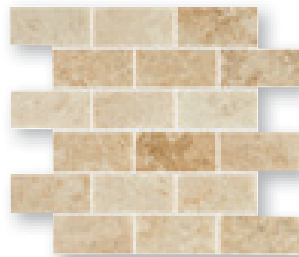
Bellano
Polished

61 x 30.5 x 1.0cm	<i>EW-BELP61X31</i>
30.5 x 30.5 x 1.0cm	<i>EW-BELP31X31</i>
30.5 x 10 x 1.0cm	<i>EW-BELP31X10</i>
15 x 7.5 x 1.0cm	<i>EW-BELP15X8</i>



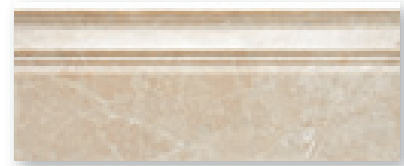
Bellano Brick Bevel
Polished

20 x 10cm	<i>EW-BELP20X10B</i>
15 x 7.5cm	<i>EW-BELP15X8B</i>



Bellano Brickbond Mosaic
Polished

30.5 x 30cm	<i>EW-BELPBBMOS</i>
-------------	---------------------



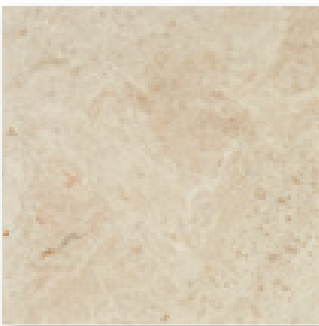
Bellano Skirting
Polished

30.5 x 10 x 1.0cm	<i>EW-BELPSKRT</i>
-------------------	--------------------



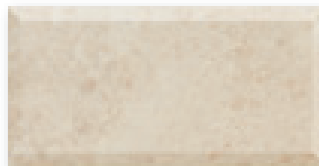
Bellano Brickbond Bevel Mosaic
Polished

30.5 x 30cm	<i>EW-BELPBBMOSB</i>
-------------	----------------------



Bellano
Honed

61 x 30.5 x 1.0cm	<i>EW-BELH61X31</i>
30.5 x 30.5 x 1.0cm	<i>EW-BELH31X31</i>
30.5 x 10 x 1.0cm	<i>EW-BELH31X10</i>
15 x 7.5 x 1.0cm	<i>EW-BELH15X8</i>



Bellano Brick Bevel
Honed

20 x 10cm	<i>EW-BELH20X10B</i>
15 x 7.5cm	<i>EW-BELH15X8B</i>



Bellano Brickbond Mosaic
Honed

30.5 x 30cm	<i>EW-BELHBBMOS</i>
-------------	---------------------



Bellano Skirting
Honed

30.5 x 10 x 1.0cm	<i>EW-BELHSKRT</i>
-------------------	--------------------



Bellano Brickbond Bevel Mosaic
Honed

30.5 x 30cm	<i>EW-BELHBBMOSB</i>
-------------	----------------------



Mica
Polished

61 x 30.5 x 1.2cm EW-MICP61X30

40.6 x 40.6 x 1.2cm EW-MICP40X40

40.6 x 20 x 1.2cm EW-MICP40X20

20 x 20 x 1.2cm EW-MICP20X20



Sorrento
Polished

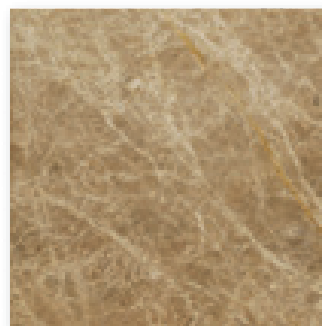
61 x 30.5 x 1.2cm EW-SOR61X30

40.6 x 40.6 x 1.2cm EW-SOR40X40

40.6 x 20 x 1.2cm EW-SOR40X20

30.5 x 30.5 x 1.2cm EW-SOR30X30

20 x 20 x 1.2cm EW-SOR20X20



Constantia Gold
Polished

60 x 30 x 1.5cm EW-CNGP60X30

30.5 x 30.5 x 1.0cm EW-CNGP30X30-A



Mica
Brushed

40.6 x 40.6 x 1.2cm EW-MICB40X40

40.6 x 20 x 1.2cm EW-MICB40X20

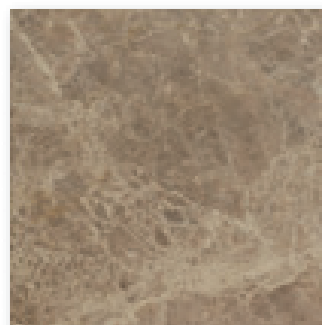
30.5 x 30.5 x 1.2cm EW-MICB30X30

20 x 20 x 1.2cm EW-MICB20X20



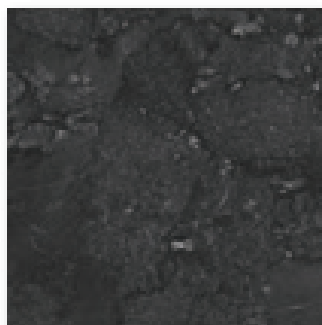
Sorrento
Brushed

30.5 x 30.5 x 1.2cm EW-SORB30X30



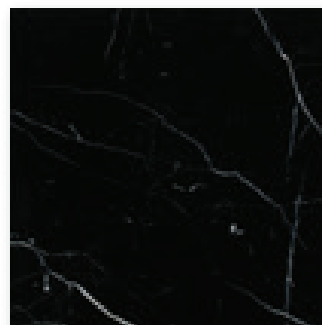
Constantia Gold
Honed

30.5 x 30.5 x 1.0cm EW-CNGH30X30A



Negra Black
Honed

30 x 10 x 1.0cm EW-NEGH30X10



Nero
Polished

30.5 x 30.5 x 1.0cm EW-NEROP31X31

Granite

Once molten like lava, then squeezed and forced up from the very centre of the earth, granite solidified millions of years ago

This hard stone, born out of such violent beginnings, is mainly made up of mica, quartz and feldspar. It is these minerals that give granite its characteristic glints and glimpses of crystal, and the many variations in colour. Dense, strong and durable – these polished granite tiles will enhance many rooms on floors, walls and hearths.

Pearl White

Pearl White is polished like the icy gloss of a frozen lake. Combine it with Black Galaxy in a classic checkerboard pattern.

Finish

Polished (2 sizes)

Black Granite

Granite's strength and density makes it a perfect stone for flooring. And in the blackest of black it makes the boldest statement of all.

Finish

Polished (3 sizes)



Black Granite 61 x 30.5cm



Black Galaxy 30.5 x 30.5cm and Pearl White 30.5 x 30.5cm



Emerald Pearl 61 x 30.5cm, 30.5 x 30.5cm

▲ Black Galaxy

Black Galaxy is so called because it appears as if each tile contains a unique system of stars, set in a black velvet sky.

Finish

Polished (2 sizes)

◀ Emerald Pearl

Both Emerald Pearl (left) and Blue Pearl will bring a serious sparkle and depth of colour to the party – and stay as fresh and as beautiful as the day they were installed.

Finish

Polished (2 sizes)

See overleaf for colour swatches, sizes and usage information



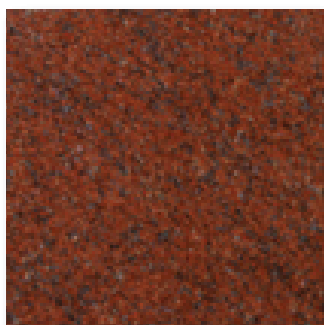
Taj Red

Red as the surface of planet
Mars, Taj is big and bold and
can't help but take centre stage.
Use it for a dramatic kitchen wall.

Finish

Polished (2 sizes)

Taj Red 61 x 30.5cm

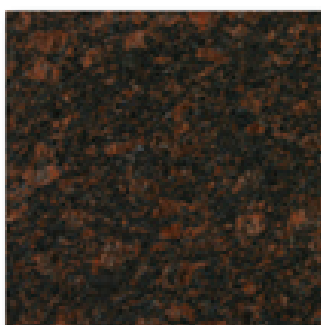


Taj Red

Polished

61 x 30.5 x 1.0cm *EW-GRNRED61X30*

30.5 x 30.5 x 1.0cm *EW-GRNRED30X30*



Tan Brown

Polished

61 x 30.5 x 1.0cm *EW-GRNBRN61X30*

30.5 x 30.5 x 1.0cm *EW-GRNBRN30X30*



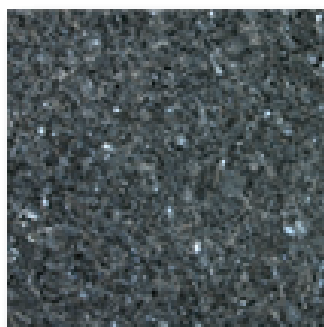
Granite



Pearl White
Polished

61 x 30.5 x 1.0 cm EW-GRNPRL61X30

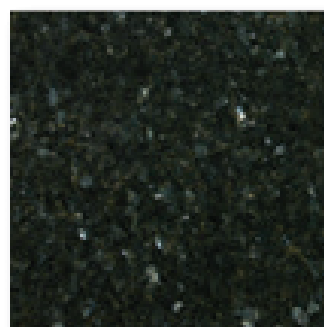
30.5 x 30.5 x 1.0 cm EW-GRNPRL30X30



Blue Pearl
Polished

61 x 30.5 x 1.0 cm EW-GRNBLU61X30

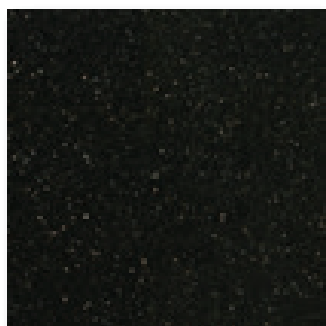
30.5 x 30.5 x 1.0 cm EW-GRNBLU30X30



Emerald Pearl
Polished

61 x 30.5 x 1.0 cm EW-GRNEMR61X30

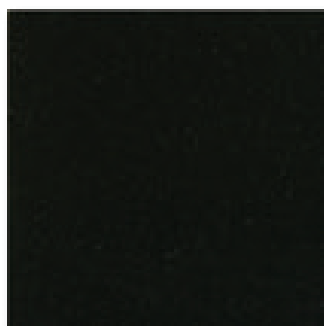
30.5 x 30.5 x 1.0 cm EW-GRNEMR30X30



Black Galaxy
Polished

61 x 30.5 x 1.0 cm EW-GRNGAL61X30

30.5 x 30.5 x 1.0 cm EW-GRNGAL30X30



Black Granite
Polished

61 x 30.5 x 1.0 cm EW-GRNBLK61X30

40.6 x 40.6 x 1.0 cm EW-GRNBLK40X40

30.5 x 30.5 x 1.0 cm EW-GRNBLK30X30



Key To Symbols

Durability

- 1 Heavy Traffic:** very hard, suitable for most commercial installations.
- 2 Medium Traffic:** suitable for light commercial and residential installations.
- 3 Light Traffic:** suitable for residential use only.
- 4 Very light traffic:** suitable for light residential use e.g. bathroom floors.

Colour variation

- A Limited:** relatively uniform but slight variations possible.
- B Moderate:** background colour generally has some variations.
- C Considerable:** variegated in colour and/or veining. Allowances for blending during installation are strongly recommended.

Special notes

- White adhesive recommended.
- ◆ Sealing required.
- ▲ Polished. Polished stone has less slip resistance when wet than unpolished stone.
- ▶ Due to the nature of the product de-lamination may occur.
- Black grout recommended.

3 Durability

B Colour Variation

Internal

Floors

Walls

Hearths

Shower/Wet Room Walls

Special Notes

Basalt

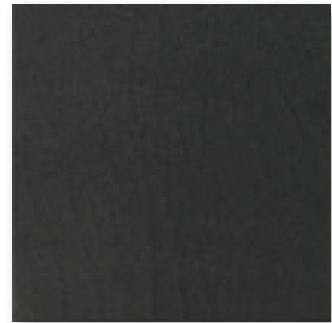
Basalt was once – many millions of years ago – flowing molten lava, the outpouring of fiery volcanoes

Now there is only a hint of its dramatic past: you can see the tiny bubbles that formed when it was cooling into the solid stone it has become. Cool, smooth and dark, basalt is incredibly hard-wearing and suitable for most areas.

Please note: One of Basalt's inherent features is that its surface is pitted with tiny holes or voids. Care must be taken when applying adhesive and when grouting. We also advise the use of black grout. Please see Important Information pages 104-115.



Polished Basalt 30 x 30cm



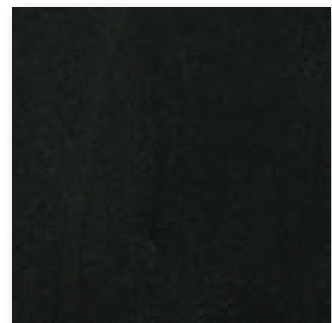
Basalt

Honed

60 x 30 x 1.5cm *EW-BASHN60X30*

45 x 45 x 1.5cm *EW-BASHN45X45*

30 x 30 x 1.5cm *EW-BASHN30X30*



Basalt

Polished

60 x 30 x 1.5cm *EW-BASP60X30*

45 x 45 x 1.5cm *EW-BASP45X45*

30 x 30 x 1.5cm *EW-BASP30X30*



See page 61 for key to symbols



Wall: Polished Basalt 60 x 30cm, 45 x 45cm and 30 x 30cm **Floor:** Honed Basalt 45 x 45cm

Natural Slate

Until the movement of the earth's tectonic plates, slate was just shale or humble mud stone

The enormous pressures involved in this shift then changed slate forever. These titanic forces realigned the minerals, mica and chlorite contained within the deposits, forming smooth flat layers.

As it is so predisposed to forming layers, slate is a natural as a floor covering. The processes involved in its creation were also responsible for the myriad of colours available.

► Black Flag

A traditional black slate flagstone in two sizes, guaranteed to provide a cosy, country house style for your home.

Finish

Natural, riven surface (2 sizes)

▼ Amazon Green

Each slate has a unique depth, and Amazon Green is no exception. It has greys and greens and darker elements, and an uneven riven surface that adds yet more to its complex character.

In four different sizes, it will look good on its own on both walls and floors (internal and external), but it can also be contrasted with mosaics or tumbled marble to great effect.

Finish

Natural Face (4 sizes)

See page 69 for colour swatches, sizes and usage information



Amazon Green 30 x 30cm, Tumbled Marble Nero 10 x 10cm (see page 47)



Burnt Sienna

A riven slate in rich, earthy colours which would look perfect on a country cottage kitchen floor or a feature wall in an ultra modern living space.

It's suitable for walls and floors, inside and out, and for hearths.

Finish

Natural Face (2 sizes)



Burnt Sienna 30 x 30cm



◀ Pontevedra

A dramatically uneven riven slate of mid-greens, offset by soft streaks of palest browns, touched here and there by creams and fawns. It will be perfectly at home in kitchens and bathrooms.

Finish

Natural Face (1 size)

Pontevedra 30 x 30cm



Andes Dawn

This is a purple slate and so good to look at it deserves a special place in your home to show it off. A dining room, large kitchen or a long uninterrupted hallway perhaps. Andes Dawn is beautiful in daylight and extraordinarily rich when spot-lit, after dark.

Finish

Natural Face (4 sizes)

See page 69 for colour swatches, sizes and usage information



Andes Dawn 40 x 40cm, Venetian Mosaics Zamora 2.5 (see page 82)



Graphite Black

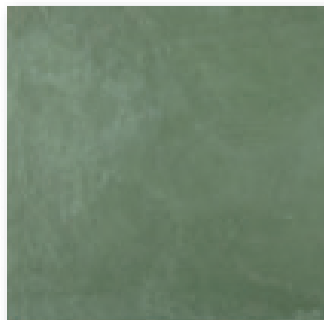
A slate that is truly black on black, with the added interest of an occasional chink of white. Looks good spot-lit and works its stylish magic especially well in modern kitchens and dining rooms.

Finish

Natural Face (4 sizes)

Graphite Black 60 x 40cm, 40 x 40cm

Natural Slate



Amazon Green
Natural Face

60 x 40 x 1.0cm EW-AG60X40

40 x 40 x 1.0cm EW-AG40X40

30 x 30 x 1.0cm EW-AG30X30

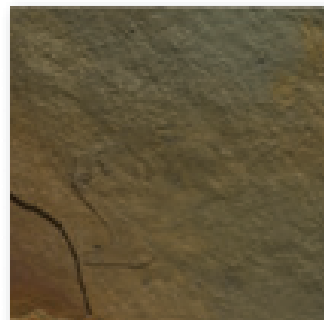
10 x 10 x 1.0cm EW-AG10X10



Burnt Sienna
Natural Face

30 x 30 x 1.0-1.5cm EW-BS30

40 x 40 x 1.0-1.5cm EW-BS40



Pontevedra
Natural Face

30 x 30 x 1.2cm EW-PON30X30



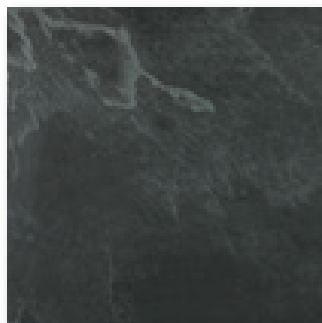
Andes Dawn
Natural Face

60 x 40 x 1.0cm EW-AD60X40

40 x 40 x 1.0cm EW-AD40X40

30 x 30 x 1.0cm EW-AD30X30

10 x 10 x 1.0cm EW-AD10X10



Graphite Black
Natural Face

60 x 40 x 1.0cm EW-GB60X40

40 x 40 x 1.0cm EW-GB40X40

30 x 30 x 1.0cm EW-GB30X30

10 x 10 x 1.0cm EW-GB10X10



Black Flag

60 x 40 x 2cm EW-BKSLFG60X40

90 x 60 x 2cm EW-BKSLFG90X60



Terracotta

Sometimes the imprint of the
tile maker's hand can be still be
seen, fired into the tile surface



Handmade Terracotta

The tile maker gives each tile a final flattening before firing. Our handmade terracotta originates from where the ancient craft of producing consistently fine quality roof and floor tiles has been perfected over centuries. Reds, oranges and yellows are the traditional palette of handmade terracotta. You can also enhance its natural beauty with linseed oil and beeswax.

Handmade Terracotta 20 x 20cm, treated with wax



Navarra Terracotta



Navarra Terracotta

30 x 15 x 2.0cm *EW-NT15*



Handmade Terracotta

40 x 40 x 2.8cm *EW-HT40*

36 x 22 x 2.0cm *EW-HT36X22*

30 x 30 x 2.0cm *EW-HT30*

20 x 20 x 2.0cm *EW-HT20*

30 x 15 x 2.0cm *EW-HT15*

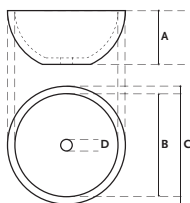
Navarra Terracotta

Navarra is the sun-baked region of north-eastern Spain, where the rolling hills of red clay soils remind us that terracotta is baked earth. This extruded variety is pale reddish-brown. Use to create a warm, Mediterranean atmosphere in hallways, kitchens and conservatories.

Mosaic Sink

This round mosaic sink is crafted entirely by hand

Specially selected travertine mosaic pieces are moulded into the shape of the sink, filled, polished and sealed. The sink will co-ordinate beautifully with any number of tiles found throughout this brochure.



Round Mosaic Classic Travertine

A - 16cm

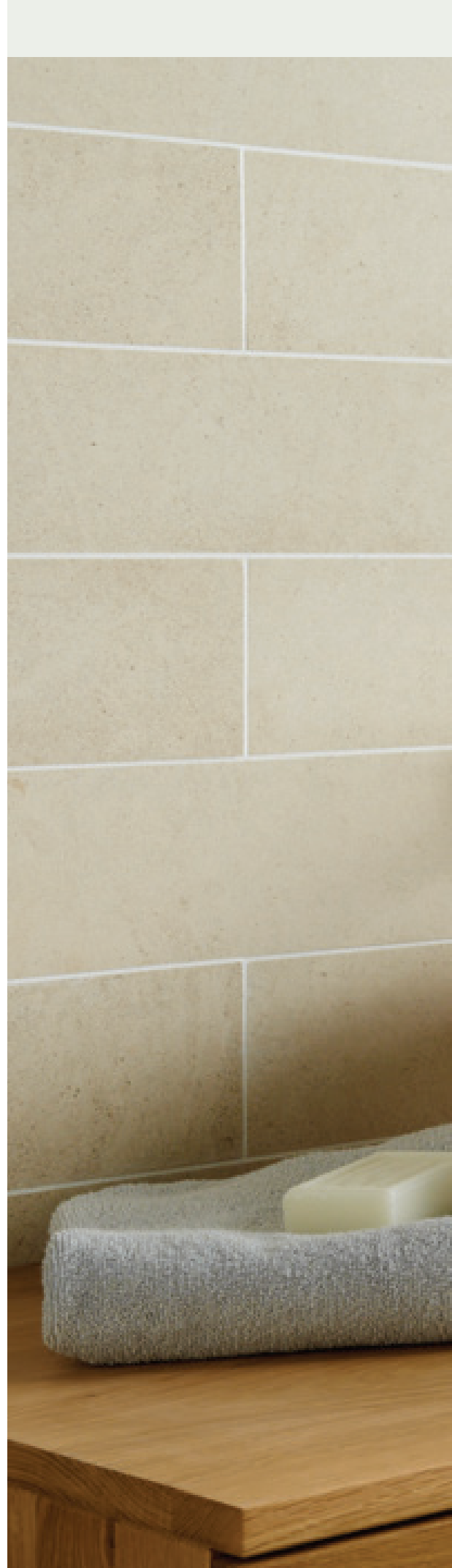
B - 35.5cm

C - 40cm

D - Nominal waste size 40mm

EW-SINKECL

Although our sinks are pre-treated with a resin seal as part of the manufacturing process we recommend that for added protection they are sealed again, prior to use. Travertine sinks should be sealed in the same way as Travertine floor tiles.

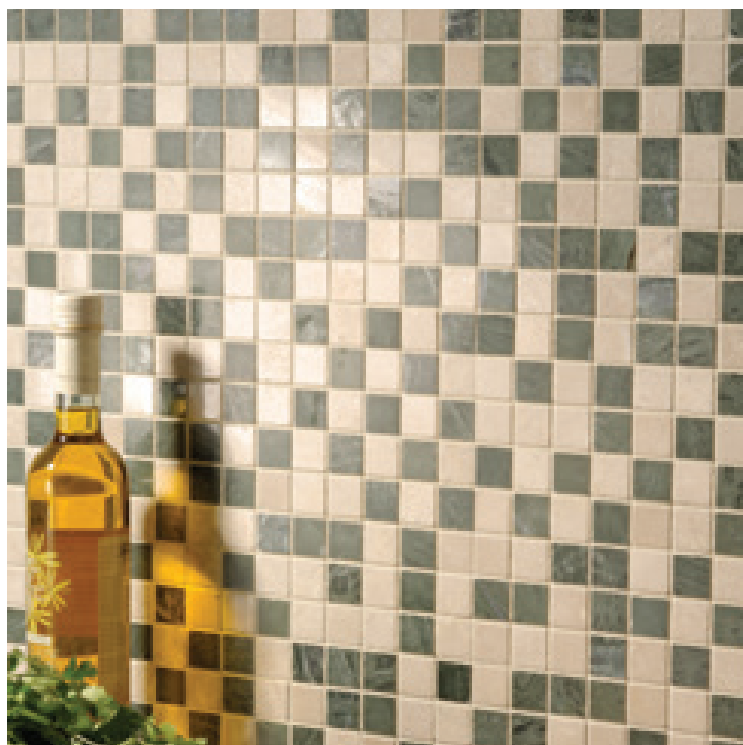




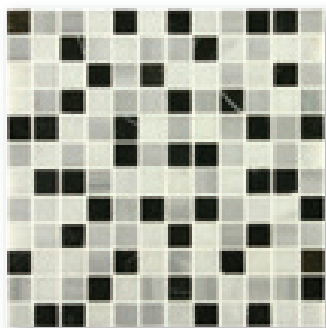
Round Mosaic Classic Travertine Sink with Ardennes Honed 30 x10cm

Mosaics

These marble mosaics will look beautiful in many locations: kitchens, bathrooms, showers, in fact most places you need a hard-working and beautiful surface.



Polished Marble Mixed Verde



Mixed Noir
Polished Marble

305 x 305 x 10mm *EW-VMPMN23*



Mixed Verde
Polished Marble

305 x 305 x 10mm *EW-VMPMV23*



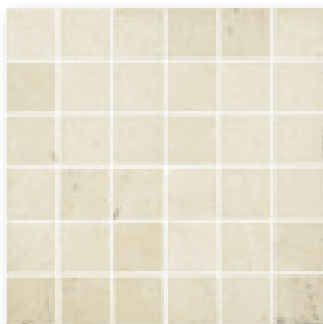
Sorrento 2.3
Polished Marble

305 x 305 x 10mm *EW-VMSORP23*



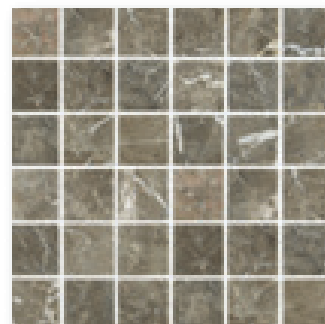
Perugia 2.3
Polished Marble

305 x 305 x 10mm *EW-VMPERP23*



Sorrento 4.8
Polished Marble

305 x 305 x 10mm *EW-VMSORP48*



Perugia 4.8
Polished Marble

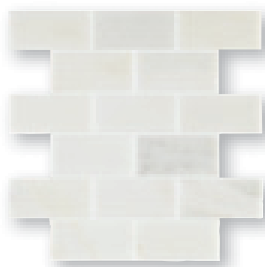
305 x 305 x 10mm *EW-VMPERP48*







Polished Bevel Mosaic



Viano White Brickbond Mosaic
Polished Marble

30.5 x 26.1cm *EW-VIAPBBMOS*



Viano White Brickbond Bevel Mosaic
Polished Marble

30.5 x 26.1cm *EW-VIAPBBMOSB*



Viano White Brickbond Mosaic
Honed Marble

30.5 x 26.1cm *EW-VIAHBBMOS*



Viano White Brickbond Bevel Mosaic
Honed Marble

30.5 x 26.1cm *EW-VIAHBBMOSB*



Salina Brickbond Mosaic
Polished Marble

30.5 x 30cm

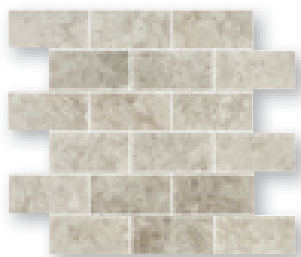
EW-SALPBBMOS



Salina Brickbond Bevel Mosaic
Polished Marble

30.5 x 30cm

EW-SALPBBMOSB



Salina Brickbond Mosaic
Honed Marble

30.5 x 30cm

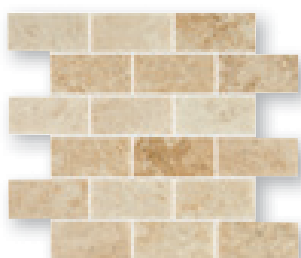
EW-SALHBBMOS



Salina Brickbond Bevel Mosaic
Honed Marble

30.5 x 30cm

EW-SALHBBMOSB



Bellano Brickbond Mosaic
Polished Marble

30.5 x 30cm

EW-BELPBBMOS



Bellano Brickbond Bevel Mosaic
Polished Marble

30.5 x 30cm

EW-BELPBBMOSB



Bellano Brickbond Mosaic
Honed Marble

30.5 x 30cm

EW-BELHBBMOS



Bellano Brickbond Bevel Mosaic
Honed Marble

30.5 x 30cm

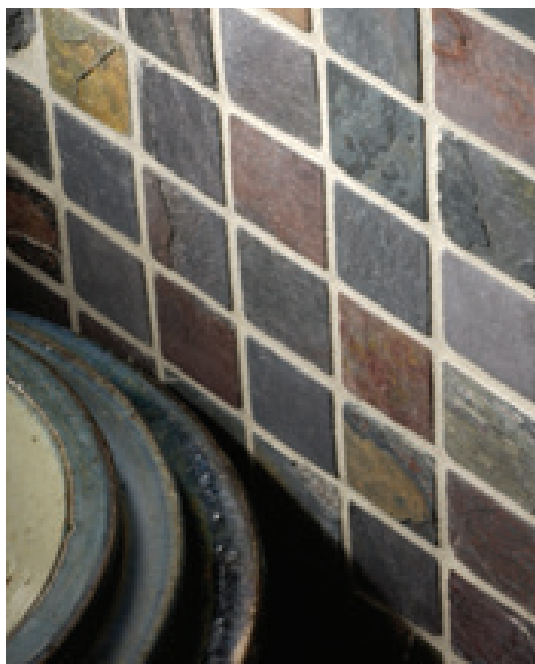
EW-BELHBBMOSB



Umbrian Gold 90 x 30cm Filled and Lightly Polished, 40 x 20cm Filled and Honed with Morenia Rectangle



Austurian 4.8



Zamora 2.5



Bianco 1.0

10mm, 23mm, 25mm and 48mm

Cut and then softened by the action of ‘tumbling’ amongst harder stones, these mosaics are still-hand set in the traditional ways of early craftsmen

In ancient Mesopotamia craftsmen cut stone to create the tiny pieces of tesserae that made up the earliest mosaics. Those used on walls were shaped and raised fractionally, to catch the ever-changing quality of light, and add beauty and interest to a surface that might otherwise be plain – or sometimes irregular. Plain or patterned, small or large, stone mosaics are extraordinarily versatile and can add beauty, colour and interest to virtually any wall or floor in any part of your domain, be it contemporary or traditional style.



Venetian Mosaic Kohima 2.5

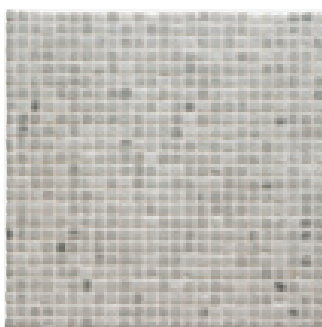
10mm



Bianco 1.0
Tumbled Marble

305 x 305 x 10mm *EW-VMBIANCO*

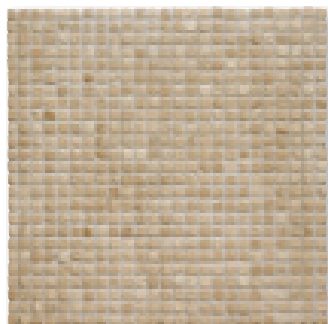
Tile size: 10mm



Grisaille 1.0
Tumbled Marble

305 x 305 x 10mm *EW-VMGRIG1*

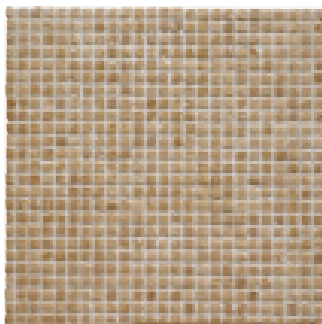
Tile size: 10mm



Crema 1.0
Tumbled Travertine

305 x 305 x 10mm *EW-VMCREMA1*

Tile size: 10mm



Noce 1.0
Tumbled Travertine

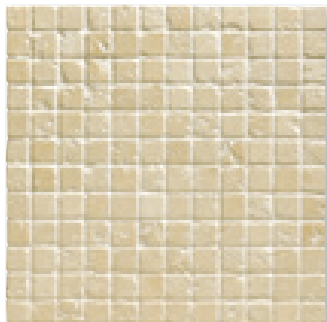
305 x 305 x 10mm *EW-VMNOCE1*

Tile size: 10mm



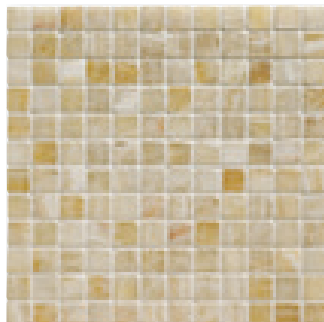
See page 95 for key to symbols

23mm



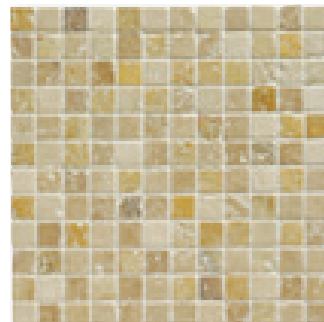
Crema 2.3
Tumbled Travertine

305 x 305 x 10mm *EW-VMCREMA*
Tile size: 23mm



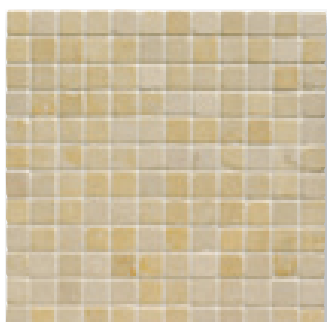
Honey Onyx 2.3
Tumbled Onyx

305 x 305 x 10mm *EW-VMHONEY*
Tile size: 23mm



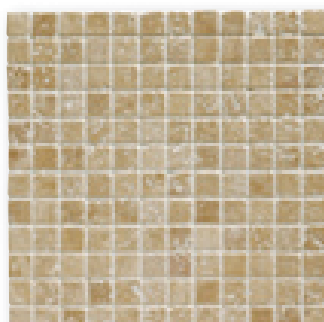
Mixed 2.3
Tumbled Travertine

305 x 305 x 10mm *EW-VMTM23*
Tile size: 23mm



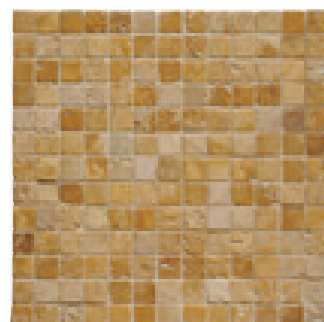
Jerusalem Gold 2.3
Tumbled Limestone

305 x 305 x 10mm *EW-VMJGOLD*
Tile size: 23mm



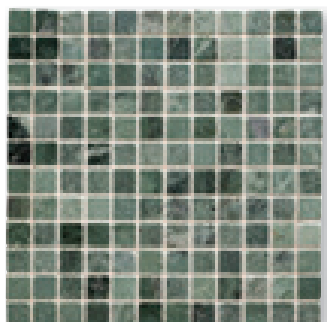
Noce 2.3
Tumbled Travertine

305 x 305 x 10mm *EW-VMNOCE*
Tile size: 23mm



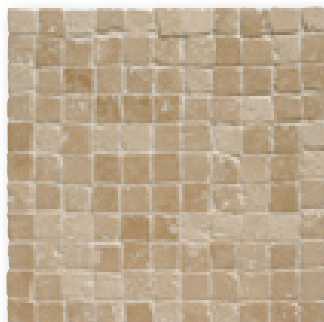
Giallo 2.3
Tumbled Travertine

305 x 305 x 10mm *EW-VMGIALLO*
Tile size: 23mm



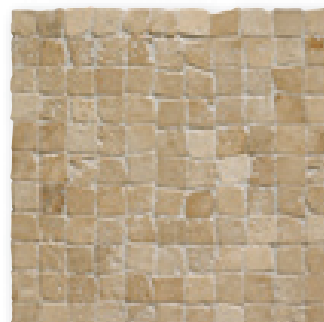
Jade 2.3
Tumbled Marble

305 x 305 x 10mm *EW-VMJADE*
Tile size: 23mm



Crema Chipped Edge 2.3
Tumbled Travertine

300 x 300 x 10mm *EW-VMCREMACE*
Tile size: 23mm

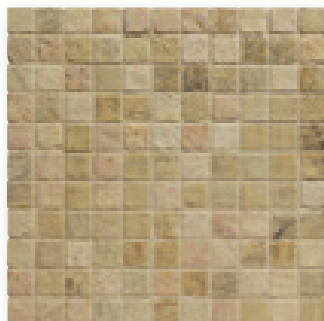


Noce Chipped Edge 2.3
Tumbled Travertine

300 x 300 x 10mm *EW-VMNOCECE*
Tile size: 23mm



25mm



Cordoba 2.5
Tumbled Sandstone

300 x 300 x 10mm EW-VMCOR25

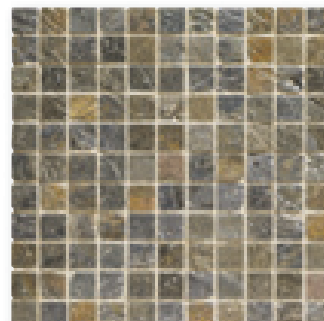
Tile size: 25mm



Austurian 2.5
Tumbled Slate

300 x 300 x 10mm EW-VMAUS25

Tile size: 25mm



Catalonia 2.5
Tumbled Quartz

300 x 300 x 10mm EW-VMCAT25

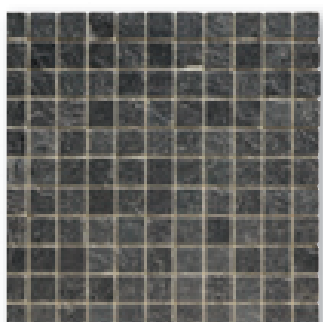
Tile size: 25mm



Zamora 2.5
Tumbled Slate

300 x 300 x 10mm EW-VMZAM25

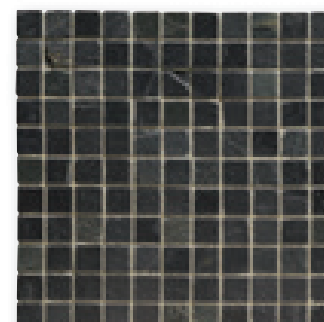
Tile size: 25mm



Kohima 2.5
Tumbled Quartz

300 x 300 x 10mm EW-VMKOH25

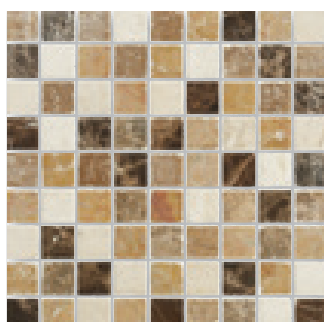
Tile size: 25mm



Vitoria 2.5
Tumbled Slate

300 x 300 x 10mm EW-VMVIT25

Tile size: 25mm



Azahar
Tumbled Marble

300 x 300 x 8mm EW-VMAZAT30

Tile size: 30mm



Morenia Rectangle
Tumbled Quartz

300 x 300 x 10mm EW-VMMORRECT

Tile size: 30mm



Nevada Rectangle
Tumbled Slate

300 x 300 x 10mm EW-VMNEVRECT

Tile size: 30mm



See page 95 for key to symbols

48mm



Crema 4.8
Tumbled Travertine

305 x 305 x 10mm EW-VMCREMA48

Tile size: 48mm



Jerusalem Gold 4.8
Tumbled Limestone

305 x 305 x 10mm EW-VMJGOLD48

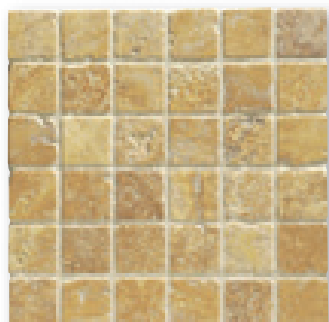
Tile size: 48mm



Mixed 4.8
Tumbled Travertine

305 x 305 x 10mm EW-VMTM48

Tile size: 48mm



Giallo 4.8
Tumbled Travertine

305 x 305 x 10mm EW-VMGIALLO48

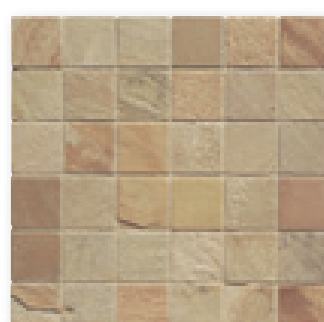
Tile size: 48mm



Castille 4.8
Tumbled Sandstone

300 x 300 x 10mm EW-VMCAS48

Tile size: 48mm



Cordoba 4.8
Tumbled Sandstone

300 x 300 x 10mm EW-VMCOR48

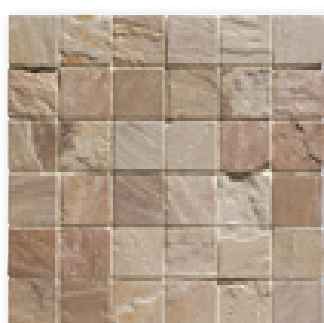
Tile size: 48mm



Noce 4.8
Tumbled Travertine

305 x 305 x 10mm EW-VMNOCE48

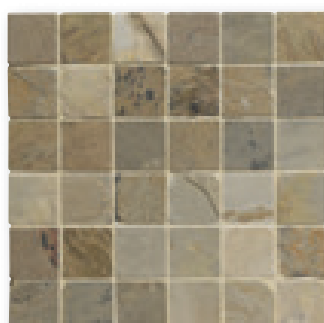
Tile size: 48mm



Morenia 4.8
Tumbled Quartz

300 x 300 x 10mm EW-VMMOR48

Tile size: 48mm



Austurian 4.8
Tumbled Slate

300 x 300 x 10mm EW-VMAUS48

Tile size: 48mm



See page 95 for key to symbols

48mm



Langreo 4.8
Tumbled Quartz

300 x 300 x 10mm EW-VMLAN48

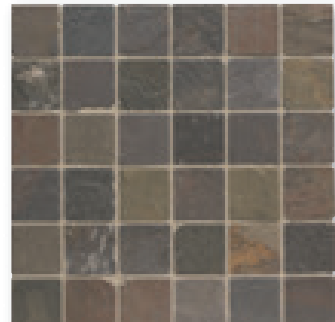
Tile size: 48mm



Catalonia 4.8
Tumbled Quartz

300 x 300 x 10mm EW-VMCAT48

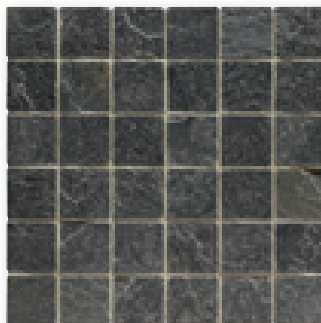
Tile size: 48mm



Zamora 4.8
Tumbled Slate

300 x 300 x 10mm EW-VMZAM48

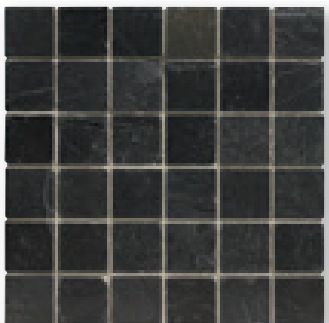
Tile size: 48mm



Kohima 4.8
Tumbled Quartz

300 x 300 x 10mm EW-VMKOH48

Tile size: 48mm



Vitoria 4.8
Tumbled Slate

300 x 300 x 10mm EW-VMVIT48

Tile size: 48mm



See page 95 for key to symbols



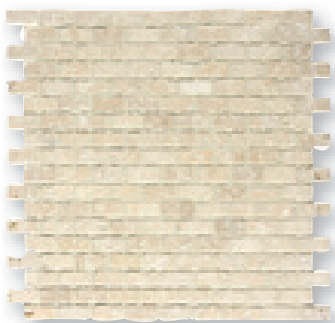
Venetian Mosaics 4.8 Mixed Travertine and 2.3 Noce



Brickbond Mosaics

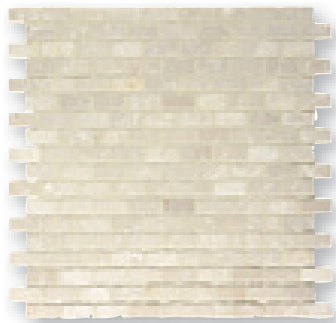
Wall: Venetian Mosaic Brickbond Beige, Venetian Mosaic Splitface Beige and Bullnose Noce

Plain and patterned, large and small, brickbond, splitface, offset – stone mosaics are incredibly versatile and add colour and interest to virtually any part of your home



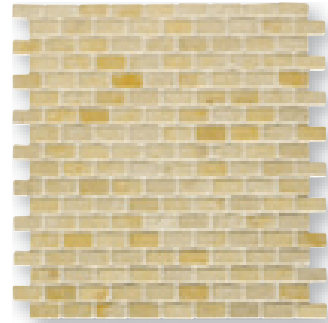
Small Brickbond Crema
Tumbled Travertine

305 x 305 x 10mm EW-VMCREMARECT



Small Brickbond Botticino
Tumbled Marble

305 x 305 x 10mm EW-VMBOTTRECT



Small Brickbond Jerusalem Gold
Tumbled Limestone

305 x 305 x 10mm EW-VMJGOLDBB



Brickbond Mosaics



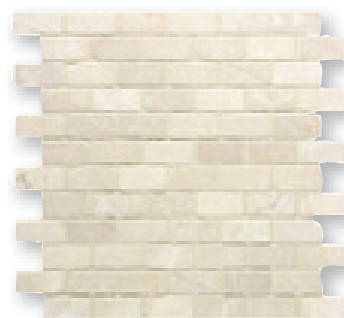
Small Brickbond Noce
Tumbled Travertine

305 x 305 x 10mm *EW-VMNOCERECT*



Brickbond Crema
Tumbled Travertine

305 x 305 x 10mm *EW-VMBBCREMAM*



Brickbond Bottocino
Tumbled Marble

305 x 305 x 10mm *EW-VMBBBOTTM*



Brickbond Noce
Tumbled Travertine

305 x 305 x 10mm *EW-VMBBNOCEM*



Brickbond Nero
Tumbled Marble

305 x 305 x 10mm *EW-VMBBNEROM*



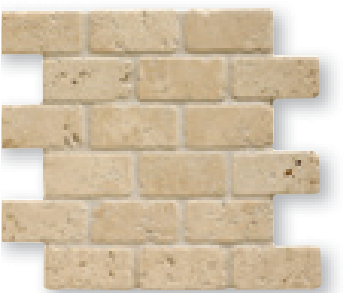
Brickbond Andorra*
Tumbled Quartz

300 x 300 x 10mm *EW-VMANDBBS*



Brickbond Beige
Tumbled Marble

305 x 305 x 10mm *EW-VMBBBEIGE*



Brickbond Crema
Tumbled Travertine

305 x 305 x 10mm *EW-VMBBCREMA*



Large Brickbond Cantabrian*
Tumbled Slate

300 x 300 x 10mm *EW-VMCANBBL*



Brickbond Cantabrian and Andorra

*Please note, these tiles might vary slightly in thickness to dimensions as stated.

*Veuillez noter : l'épaisseur et les dimensions de ces carreaux peuvent varier par rapport à celles citées.

*Bitte beachten Sie, dass diese Fliesen mit Bezug auf die angegebenen Maße in der Dicke leicht variieren können.

*Let op: de dikte van de deze tegel kan enigszins verschillen ten opzichte van de vermelde afmetingen.



See page 95 for key to symbols

Pattern Mosaics

These designs draw inspiration from patterns that were around in ancient Roman and Moorish worlds



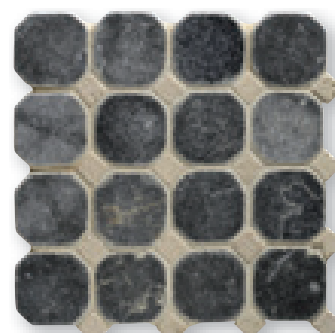
White Octagon 10
Tumbled Marble

310 x 310 x 10mm *EW-VMOCTW10*



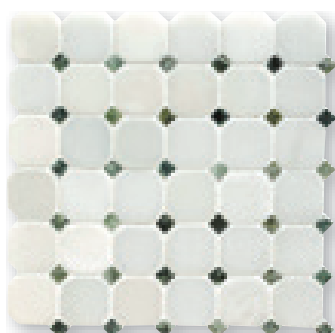
Crema Octagon 10
Tumbled Travertine

310 x 310 x 10mm *EW-VMCRPENT10*



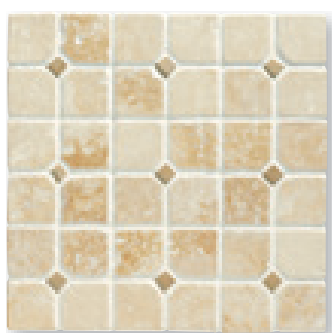
Black/Crema Octagon
Tumbled Marble

300 x 300 x 10mm *EW-VMBLKOCT*



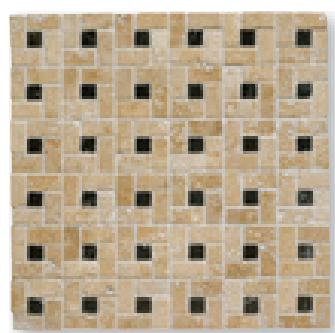
White Octagon 4.8
Tumbled Marble

300 x 300 x 10mm *EW-VMOCTW48*



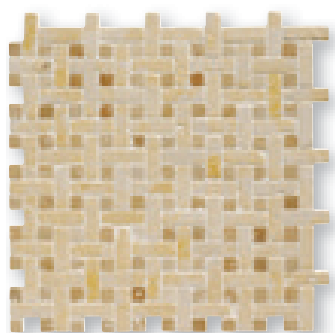
Crema Pentagon 4.8
Tumbled Travertine

305 x 305 x 10mm *EW-VMCRPENT48*



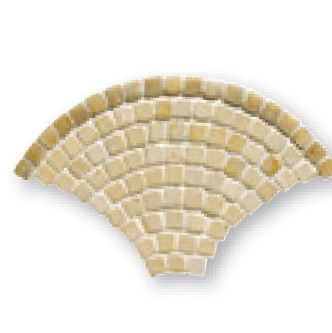
Spiral Noce Black
Tumbled Marble/Travertine

300 x 300 x 10mm *EW-VMNOCESP*



Jerusalem Gold Basketweave
Tumbled Limestone

300 x 300 x 10mm *EW-VMBJGOLD*



Fan Honey
Tumbled Limestone/Onyx

160 x 270 x 10mm *EW-VMFANH*

(43 per square metre)



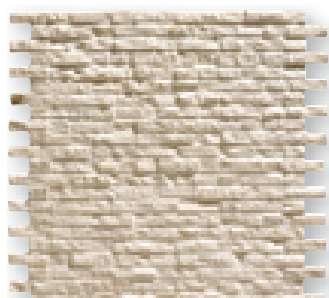
See page 95 for key to symbols

Splitface Mosaics

These designs draw inspiration from patterns that were around in ancient Roman and Moorish worlds

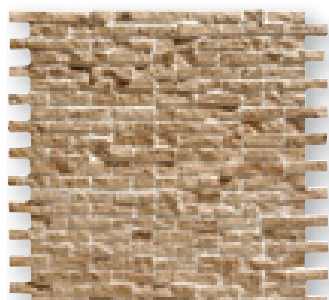


Splitface Negra Black



Splitface Beige
Tumbled Marble

300 x 300 x 10mm EW-VMSFBEIGE



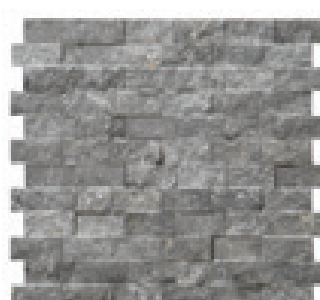
Splitface Noce
Tumbled Travertine

300 x 300 x 10mm EW-VMSFNOCE



Splitface Leventine Ivory
Tumbled Travertine

290 x 276 x 10mm EW-LIVSFMOS



Splitface Negra Black
Tumbled Marble

290 x 276 x 10mm EW-NEGSFMOS



See page 95 for key to symbols



Rustic Red

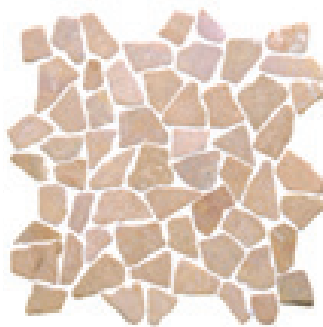
Rustic Mosaics

Smooth-edged crocks of broken stones
loosely arranged into interlocking shapes



Rustic Sandstone

290 x 290 x 10-14mm *EW-VMRSAN2*



Rustic Red

290 x 290 x 10-14mm *EW-VMRRED2*



Rustic Oatmeal

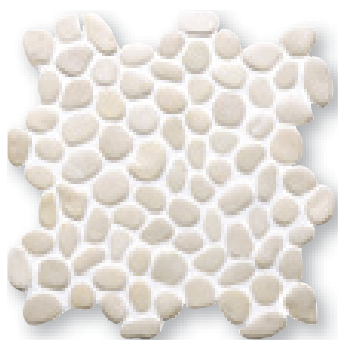
290 x 290 x 10-14mm *EW-VMROAT2*



See page 95 for key to symbols

Pebble Mosaics

We have reduced the process of 'pebble creation' (perfected by Nature over millennia) by several thousand years



Ivory Samoa Pebble

290 x 290 x 10-14mm EW-SAMOA2



Ivory Samoa Border

250 x 100 x 10-14mm EW-SAMOA2



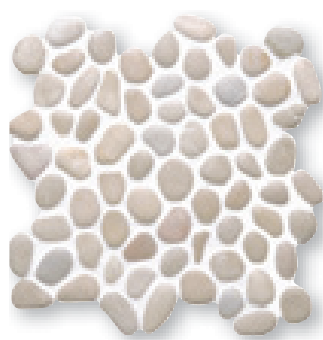
Quail Maui Pebble

290 x 290 x 10-14mm EW-MAUI2



Quail Maui Border

250 x 100 x 10-14mm EW-MAUIB2



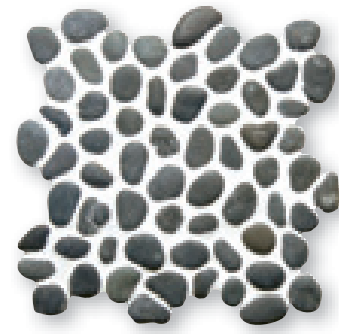
Beige Hawaii Pebble

300 x 300 x 10-14mm EW-HAWAII3



Beige Hawaii Border

270 x 100 x 10-14mm EW-HAWAII3



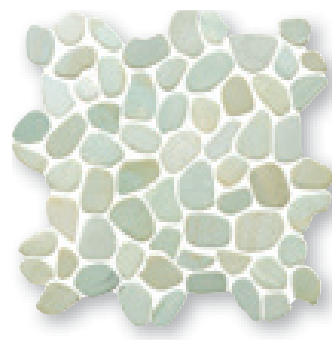
Black Tonga Pebble

290 x 290 x 10-14mm EW-TONGA2



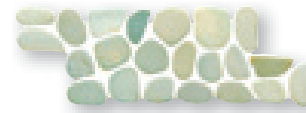
Black Tonga Border

250 x 100 x 10-14mm EW-TONGAB2



Green Bali Hai Pebble*

290 x 290 x 10-14mm EW-BALIIA2



Green Bali Hai Border*

250 x 100 x 10-14mm EW-BALIIA2



*Please note that the pebbles in Green Bali Hai Mosaic and Border are flatter than the other pebbles on this page.

*Veuillez noter : les galets des mosaïques et bordures Green Bali Hai sont plus plats que les autres galets de cette page.

* Bitte beachten Sie, dass die Steinchen des Designs Bali Hai Green in Mosaik und Bordüre flacher sind, als die anderen Kieselmosaiks auf dieser Seite.

*Let op: de kiezels en de randen in de mozaïek Green Bali Hai zijn platter dan de andere kiezels op deze pagina.

Возратите внимание, что галька, использованная в мозаике и бордюрах Green Bali Hai, более плоская, чем представленная на данной странице.



See page 95 for key to symbols

Linear Mosaics

Clever use of these contemporary linear mosaics, either horizontally or vertically, can create a feeling of space and harmony



Trend Sorrento
Polished Marble

305 x 330 x 10mm *EW-TRENDSOR*



Trend Mica
Polished Marble

305 x 330 x 10mm *EW-TRENDMIC*



Trend Noce
Honed Travertine

305 x 330 x 10mm *EW-TRENDNOCE*



Classic Sorrento
Polished Marble

305 x 305 x 10mm *EW-CLASSICSOR*



Classic Mica
Polished Marble

305 x 305 x 10mm *EW-CLASSICMIC*



Classic Noce
Honed Travertine

305 x 305 x 10mm *EW-CLASSICNOCE*



Chic Bottocino
Polished Marble

305 x 305 x 10mm *EW-VMCHICBOTT*



Chic Noce Travertine
Honed Marble

305 x 305 x 10mm *EW-VMCHICNOCE*



See page 95 for key to symbols

Strata

Smooth and tactile, these striking stone and glass mosaics include colours of sand, eau de nil, smoke and mahogany

Such earthy shades will enhance walls in many situations. For understated elegance combine with more polished or honed natural stone tiles, or partner them with wooden work surfaces or plain walls.



Alluvial
Stone/Glass

334 x 304 x 8mm GW-ALLMOS



Silurian
Stone/Glass

334 x 304 x 8mm GW-SILMOS



Silurian



Cretaceous
Stone/Glass

398 x 358 x 8mm GW-CREMOS



Jurassic
Marble

298 x 298 x 8mm EW-JURASS





Compass Noce with Ardennes Honed Limestone

Medallions

Hand-set medallions will complement every décor and become the centrepiece of any floor

Traditionally the star in a square symbolises hope; the compass rose within a square, the quest for earthly and heavenly perfection. Medallions also make wonderful centres for outdoor dining tables. They are especially stunning set in a hallway and viewed from a landing.



Classic Medallion
Tumbled Marble

603 x 603 x 10mm EW-CLMMED



Compass Noce
Tumbled Marble/Travertine

603 x 603 x 10mm EW-CMPNOCE



Medallion Mosaics are not shown to scale with reference shots shown on other pages

Key To Symbols

Durability

- 1 **Heavy Traffic:** very hard, suitable for most commercial installations.
- 2 **Medium Traffic:** suitable for light commercial and residential installations.
- 3 **Light Traffic:** suitable for residential use only.
- 4 **Very light traffic:** suitable for light residential use e.g. bathroom floors.

Colour variation

- A Limited:** relatively uniform but slight variations possible.
- B Moderate:** background colour generally has some variations.
- C Considerable:** variegated in colour and veining. Allowances for blending during installation are strongly recommended.

Special notes

- White adhesive recommended.
- ◆ Sealing required.
- ▲ Polished. Polished stone has less slip resistance when wet than unpolished stone.
- ✱ Contains metal. It is essential that a qualified electrician carries out all work around any mosaics containing metal.



Durability



Colour Variation



Internal



Floors



Walls



Hearths



Shower/Wet Room Walls



Special Notes

Stone Borders



Athenian Interlocking Noce

300 x 50 x 10mm EW-ATHINTN ◆



Athenian Braid Travertine

300 x 50 x 10mm EW-ATBRAIDT ◆



Namib

290 x 65 x 10mm EW-ATNAM ◆



Arabian Small

285 x 70 x 10mm EW-ATARBS ◆



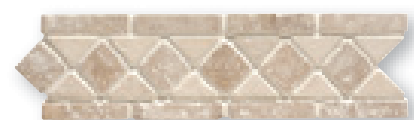
Arizona

280 x 70 x 10mm EW-ATARZ ◆



Athenian Quadrant Travertine

300 x 70 x 10mm EW-ATQUADT ◆



Meseta

280 x 85 x 10mm EW-ATMES ◆



Gibson

305 x 100 x 10mm EW-ATGIB ◆



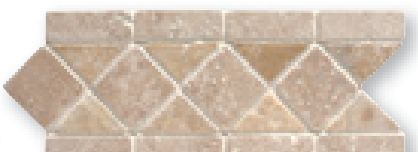
Arabian large

310 x 100 x 10mm EW-ATARBL ◆



Navarino

305 x 100 x 10mm EW-ATNAV ◆



Sevier

290 x 125 x 10mm EW-ATSEV ◆



Tanami

280 x 125 x 10mm EW-ATTNM ◆



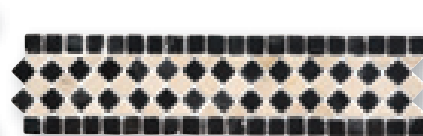
Athenian Diamond Noce

300 x 100 x 10mm EW-ATHDIAN ◆



Athenian Diamond Black

300 x 100 x 10mm EW-ATHDIAB ◆



Athenian Quadrant Black

300 x 70 x 10mm EW-ATQUADB ◆



Athenian Scroll Black

300 x 100 x 10m EW-ATSCROLLB ◆



Athenian Rope Black

300 x 100 x 10mm EW-ATROPEB ◆



Athenian Key Black

280 x 100 x 10mm EW-ATKEYB ◆



Suitability for Mixed Format Borders

See page 95 for key to symbols



Athenian Braid Black

300 x 50 x 10mm EW-ATBRAIDB ◆

Mixed Format Borders (Stone, Metal & Glass)



Atamaca

Honed*

300 x 48 x 8mm EW-ACMHB ♦ ✕



Madalena

Honed*

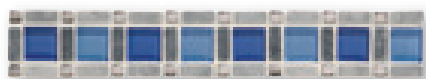
300 x 48 x 8mm EW-MDLHB ♦



Sonoan

Honed*

300 x 48 x 8mm EW-SONHB ♦ ✕



Atacama

Polished*

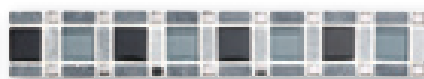
300 x 48 x 10mm EW-ACMPB ♦ ✕



Madalena

Polished*

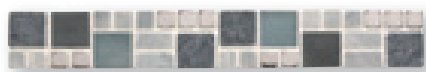
300 x 48 x 8mm EW-MDLPB ♦ ✕



Sonoan

Polished*

300 x 48 x 8mm EW-SONPB ♦ ✕



Escalante

Honed*

300 x 48 x 8mm EW-ESCHB ♦



Mazatlan

Honed*

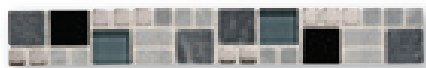
340 x 47 x 8mm EW-MAZHB ♦ ✕



Yuma

Honed*

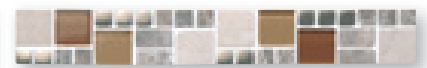
300 x 48 x 8mm EW-YMAHB ♦



Escalante

Polished*

300 x 48 x 8mm EW-ESCPB ♦ ✕



Mazatlan

Polished*

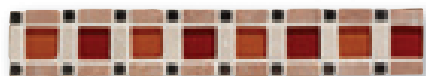
340 x 47 x 8mm EW-MAZPB ♦ ✕



Yuma

Polished*

300 x 48 x 8mm EW-YMAPB ♦ ✕



Patagonian

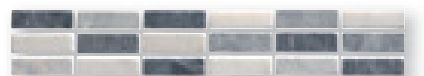
Polished*

300 x 48 x 8mm EW-PTGPB ♦ ✕



Henge

300 x 45 x 10mm EW-HENGE ♦



Borrega

300 x 49 x 8mm EW-BRRB ♦



Altai

Honed

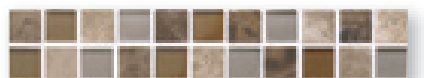
305 x 53 x 10mm EW-ALTHB ♦ ✕



Altai

Polished

305 x 53 x 10mm EW-ALTPB ♦ ✕



Zama

Polished

305 x 53 x 8mm EW-ZAMPB ♦ ✕

* These sheets contain metal. Please see pages 104-105 before installation.

* Ces plaques contiennent du métal. Veuillez consulter les pages 106-107 avant de procéder à l'installation.

* Diese Matten enthalten Metall. Bitte lesen Sie vor der Installation Seite 108-109.

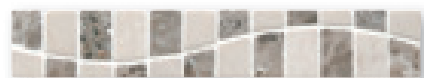
* Deze matten bevatten metaal. Raadpleeg pagina's 110-111 voorafgaand aan de installatie.

* Эти листы содержат металл. Перед укладкой см. страницы 112-113.



Suitability for Mixed Format Borders

See page 104 for key to symbols



Caribou

300 x 50 x 8mm EW-CARHB ♦ ✕

Dados & Trims

Designed to add interest and provide those finishing touches

You can use these dados and trims in many ways: to separate tiles of different sizes, textures and colours; as a finishing edge to an area of tiling below; as a decorative feature above and below a border. The dados and trims shown here coordinate with many of the colours of natural stone tiles and mosaics throughout this brochure.



Small Chair Rail Crema, Bullnose Crema, Mosaic Border Meseta with Tumbled Marble Mica Mix 10 x 10cm (see pages 42 and 90)

 Chair Rail 300 x 30mm



Ardennes **Honed Limestone**

300 x 30 x 19mm EW-ARDHSCR



Lascaux **Honed Limestone**

300 x 30 x 19mm EW-LASHSCR



Ardennes **Polished Limestone**

300 x 30 x 19mm EW-ARDPSCR



Lascaux **Polished Limestone**

300 x 30 x 19mm EW-LASPSCR

 Chair Rail 300 x 47mm



Bellano **Honed Marble**

305 x 47 x 23mm EW-CRBELH31 ◆ ●



Salina **Honed Marble**

305 x 47 x 23mm EW-CRSALH31 ◆ ●



Bellano **Polished Marble**

305 x 47 x 23mm EW-CRBELP31 ◆ ●



Salina **Polished Marble**

305 x 47 x 23mm EW-CRSALP31 ◆ ●

 Chair Rail 305 x 65mm



Viano White **Honed Marble**

305 x 65 x 20mm EW-CRVIAH31 ◆ ●



Viano White **Polished Marble**

305 x 65 x 20mm EW-CRVIAIP31 ◆ ●

 Pencil Line 305 x 15mm



Bellano **Honed Marble**

305 x 15 x 19mm EW-PLBELH31 ◆ ●



Salina **Honed Marble**

305 x 15 x 19mm EW-PLSALH31 ◆ ●



Viano White **Honed Marble**

305 x 20 x 20mm EW-PLVIAH31 ◆ ●



Bellano **Polished Marble**

305 x 15 x 19mm EW-PLBELP31 ◆ ●



Salina **Polished Marble**

305 x 15 x 19mm EW-PLSALP31 ◆ ●



Viano White **Polished Marble**

305 x 20 x 20mm EW-PLVIAIP31 ◆ ●



Suitability for Dados and Trims
See page 95 for key to symbols

D Bullnose 305 x 29mm



Bianco Honed Marble

305 x 29 x 19mm EW-BNBN30 ◆

D Pencil Line 100 x 15mm



Bianco Honed Marble

100 x 15 x 19mm EW-PLBN10 ◆◆



Bottocino Honed Marble

305 x 29 x 19mm EW-BNBT30 ◆



Bottocino Honed Marble

100 x 15 x 19mm EW-PLBT10 ◆

D Bullnose 100 x 29mm



Crema Honed Travertine

300 x 29 x 19mm EW-BNC30 ◆



Crema Honed Travertine

100 x 15 x 19mm EW-PLC10 ◆



Crema Travertine

100 x 29 x 19mm EW-BNC10 ◆



Noce Honed Travertine

300 x 29 x 19mm EW-BNN30 ◆



Noce Honed Travertine

100 x 15 x 19mm EW-PLN10 ◆



Noce Travertine

100 x 29 x 19mm EW-BNN10 ◆



Constantina Honed Marble

305 x 29 x 19mm EW-BNCO30 ◆



Constantina Honed Marble

100 x 15 x 19mm EW-PLCO10 ◆



Red Honed Travertine

305 x 29 x 19mm EW-BNRT30 ◆



Red Honed Travertine

100 x 15 x 19mm EW-PLRT10 ◆



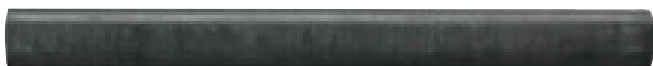
Verde Honed Marble

305 x 29 x 19mm EW-BNVE30 ◆



Verde Honed Marble

100 x 15 x 19mm EW-PLVE10 ◆



Noir Honed Marble

305 x 29 x 19mm EW-BNNR30 ◆



Noir Honed Marble

100 x 15 x 19mm EW-PLNR10 ◆



Suitability for Dados and Trims
See page 95 for key to symbols

 Small Chair Rail 300 x 30mm



Bianco Honed Marble

305 x 30 x 19mm EW-SCBN30 ♦



Botticino Honed Marble

305 x 30 x 19mm EW-SCBT30 ♦



Crema Honed Travertine

300 x 30 x 19mm EW-SCRC30 ♦



Noce Honed Travertine

300 x 30 x 19mm EW-SCRN30 ♦



Constantia Honed Marble

305 x 30 x 19mm EW-SCRCO30 ♦



Red Honed Travertine

305 x 30 x 19mm EW-SCRRT30 ♦



Verde Honed Marble

305 x 30 x 19mm EW-SCRVE30 ♦



Noir Honed Marble

305 x 30 x 19mm EW-SCRNR30 ♦

 Chair Rail 300 x 45mm



Bianco Honed Marble

305 x 45 x 19mm EW-CRBN30 ♦



Botticino Honed Marble

305 x 45 x 19mm EW-CRBT30 ♦



Crema Honed Travertine

300 x 45 x 19mm EW-CRC30 ♦



Noce Honed Travertine

300 x 45 x 19mm EW-CRN30 ♦



Constantia Honed Marble

305 x 45 x 19mm EW-CRCO30 ♦



Red Honed Travertine

305 x 45 x 19mm EW-CRRT30 ♦



Verde Honed Marble

305 x 45 x 19mm EW-CRVE30 ♦



Noir Honed Marble

305 x 45 x 19mm EW-CRNR30 ♦



Suitability for Dados and Trims
See page 95 for key to symbols

Pattern Guides and Sets

There are many designs which can be achieved using Earthworks stone tiles – here are just a few to try, or you can design your own patterns to fit your individual rooms.

You can use individual tiles to make up the patterns if they match the dimensions, and there are three sets available too: Levantine Ivory Manor Set (travertine, see page 14), St Sernin Mixed Tumbled Set and Greyfriars Abbey Set (both limestone, see pages 35 and 36). When fitting any patterns, you will find that you will have to adjust grout gaps to ensure the tiles tessellate and you may find you have to cut some tiles to enable them to fit. Try and avoid cutting tiles with pillowed or chipped edges as this will be noticeable in your finished design. We recommend that you use a professional stone fitter to fit your floor tiles, and that they should check and confirm actual dimensions before fitting. Please note that due to the nature of these designs the dimensions set out above are approximate only. For larger areas there will be greater variances due to grout gaps and fitting to irregular edges of the room being tiled. Please note that the large pieces of stone and the sets are extremely heavy. Care must be taken when lifting and carrying these tiles, so we strongly recommend that installations of pattern sets are carried out by two people to avoid personal injury.

Informations sur les motifs et ensembles

Les carreaux en pierre Earthworks peuvent former une variété de motifs – en voici juste quelques exemples à essayer. Vous pouvez aussi créer vos propres motifs selon le style de votre pièce. Vous pouvez utiliser les carreaux individuels pour former les motifs s'ils s'adaptent à vos dimensions, et trois ensembles sont également disponibles : Levantine Ivory Manor Set (travertin, voir page 14), St Sernin Mixed Tumbled Set et Greyfriars Abbey Set (tous deux en pierre calcaire, voir pages 35 et 36). Lors de l'installation des motifs, vous devrez parfois ajuster les écarts de joints ou découper certains carreaux pour garantir une disposition harmonieuse des carreaux. Évitez de découper les carreaux dont les bords sont dilatés ou écaillés car cela se verra une fois votre motif installé. Nous vous recommandons de faire appel à un carreleur professionnel pour poser vos carreaux de sols, et que celui-ci vérifie et confirme vos dimensions avant de procéder à l'installation. Veuillez noter que les dimensions indiquées sont données uniquement à titre indicatif, étant donnée la nature des motifs. Pour les surfaces plus grandes, les variations seront plus importantes en raison des écarts de joint et du besoin de s'adapter aux contours irréguliers de la pièce à carreler. Veuillez noter que les grandes pièces en pierre et les ensembles sont extrêmement lourds. Prenez le plus grand soin lorsque vous soulevez et transportez ces carreaux ; nous recommandons vivement que l'installation des ensembles soit effectuée par deux personnes pour éviter de vous blesser.

Sets und Verlegemuster

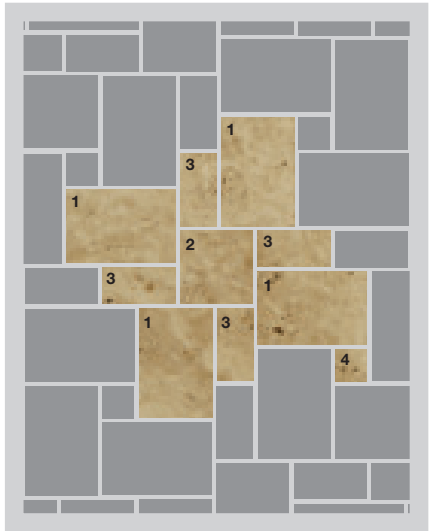
Es gibt viele Designs, die mit Earthworks Steinfliesen verwirklicht werden können – hier nur ein paar Beispiele. Sie können aber auch Ihre eigenen Muster für den jeweiligen Raum entwerfen. Sie können die Muster mit einzelnen Fliesen verwirklichen, wenn diese den Raummaßen entsprechen. Es sind aber auch drei Sets erhältlich: Levantine Ivory Manor Set (Travertin, siehe Seite 14), St Sernin Mixed Tumbled Set und Greyfriars Abbey Set (beide Kalkstein, siehe Seite 35 und 36). Beim Auslegen des jeweiligen Musters werden Sie feststellen, dass Sie für ein harmonisches Ergebnis der Verlegearbeit Fugenbreiten anpassen und Fliesen anschnitten müssen. Versuchen Sie jedoch, das Schneiden von Fliesen mit abgerundeten oder rustikal angeschlagenen Kanten zu vermeiden, da das Gesamtanscheinungsbild dadurch beeinträchtigt werden kann. Original Style empfiehlt, daß Sie einen erfahrenen Naturstein-Verleger mit der Verlegung beauftragen und daß dieser vor der Verlegung die tatsächlichen Dimensionen überprüft und bestätigt. Bitte achten Sie darauf, daß aufgrund der jeweiligen Eigenheit der Designs alle genannten Abmessungen nur ungefähre Maße sind. Bei größeren Flächen wird es, durch Fugen und Einpassungen von ungleichmäßigen Wänden des zu verfliesenden Raumes, größere Abweichungen geben. Bitte beachten Sie, daß die großen Steinformate und Sets wirklich schwer sind. Beim Anheben und Tragen dieser Platten sollten Sie unbedingt vorsichtig sein; wir raten dringend an, daß die Verlegung der großen Formate und Sets von zwei Personen ausgeführt wird, um Verletzungen zu vermeiden.

Patroongidsen en -sets

Vele verschillende ontwerpen zijn mogelijk met de stenen tegels van Earthworks. Hieronder treft u enkele voorbeelden aan. U kunt ook uw eigen patronen ontwerpen, die aansluiten op uw eigen kamers. U kunt afzonderlijke tegels gebruiken om de patronen te creëren als de afmetingen overeenkomen. Verder zijn er ook drie sets beschikbaar: Levantine Ivory Manor Set (travertijn, zie pagina 14), St Sernin Mixed Tumbled Set en Greyfriars Abbey Set (beide kalksteen, zie pagina's 35 en 36). Bij het passen van patronen zult u merken dat voegnaden moeten worden aangepast, om ervoor te zorgen dat de tegels elkaar niet overlappen. Soms zult u ook enkele tegels moeten snijden om ze passend te maken. Probeer het snijden van tegels met ronde of scherpe hoeken te vermijden, aangezien dit te zien zal zijn in uw eindontwerp. We raden aan dat u een professionele tegelzetter gebruikt voor uw vloeren, en dat deze de daadwerkelijke afmetingen controleert en bevestigt voordat de tegels worden gezet. Let op: wegens de aard van deze ontwerpen zijn de vermelde afmetingen slechts een leidraad. Voor grotere vloeren kan er sprake zijn van meer variatie wegens voegnaden en het in elkaar passen van onregelmatige hoeken in de kamer waar de tegels worden gelegd. Let op: grote stenen tegels en de sets zijn zeer zwaar. Wees voorzichtig bij het optillen en dragen van deze tegels. We raden aan dat installaties of patroonsets worden gedragen door twee personen, zodat persoonlijk letsel wordt vermeden.

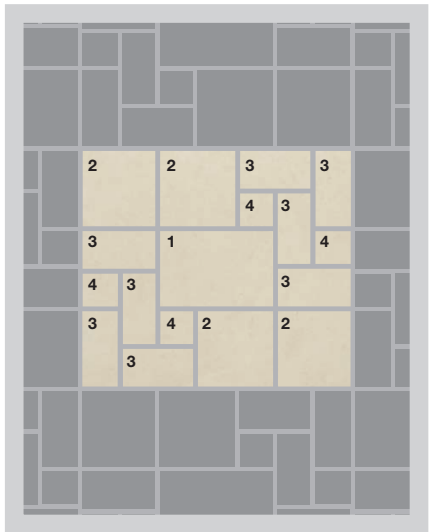
Руководства для создания узоров и наборы плиток

Вы можете использовать отдельные плитки для создания узора, если они совпадают по размеру. Мы также предлагаем три набора: Levantine Ivory Manor Set (травертин, см. стр. 14), St Sernin Mixed Tumbled Set и Greyfriars Abbey Set (оба набора из известняка, см. стр. 35 и 36). При создании узора вы обнаружите, что необходимо корректировать зазоры с затиркой для того, чтобы получилась мозаика. Также может оказаться, что вам потребуется обрезать некоторые плитки, чтобы все поместилось. Постарайтесь избежать резки плитки со сколотыми краями, поскольку в результате места среза будут бросаться в глаза. Мы рекомендуем воспользоваться услугами профессионального мастера по камню для укладки напольной плитки. Кроме того, мастеру необходимо проверить и убедиться в точности реальных размеров помещения и плитки до укладки. Обратите внимание, что по причине особенностей этих вариантов дизайна размеры, указанные выше, являются примерными. В случае с большими поверхностями различия будут более значительными по причине зазоров с затиркой и подгонки под размер помещения. Обратите внимание, что большие куски камня и наборы плиток имеют очень большой вес. При подъеме и перемещении такой плитки необходимо помнить об осторожности. В связи с этим, чтобы избежать травм, мы настоятельно рекомендуем осуществлять укладку наборов плитки с узором двумя людьми.



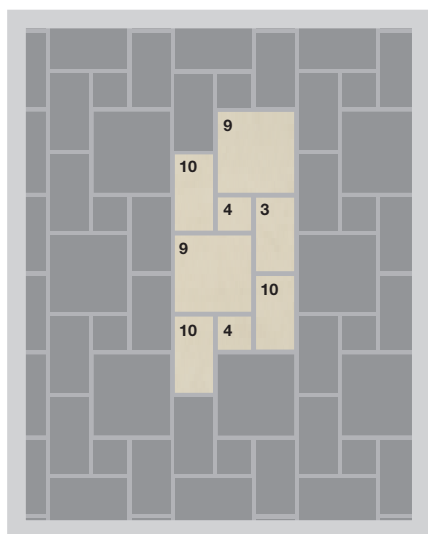
A Tiles shown above
Umbrian Gold Unfilled & Honed

No.	Size (cm)	Pieces	m ²
1	60 x 40	4	0.96
2	40 x 40	1	0.16
3	20 x 40	4	0.32
4	20 x 20	1	0.04
Total		10	1.48



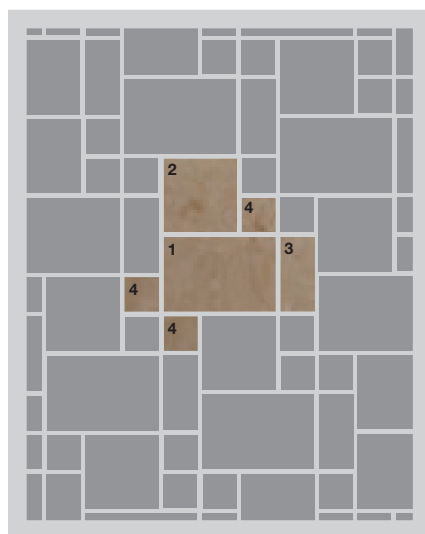
E Tiles shown above
Dolomite White Honed

No.	Size (cm)	Pieces	m ²
1	60 x 40	1	0.24
2	40 x 40	4	0.64
3	20 x 40	8	0.64
4	20 x 20	4	0.16
Total		17	1.68



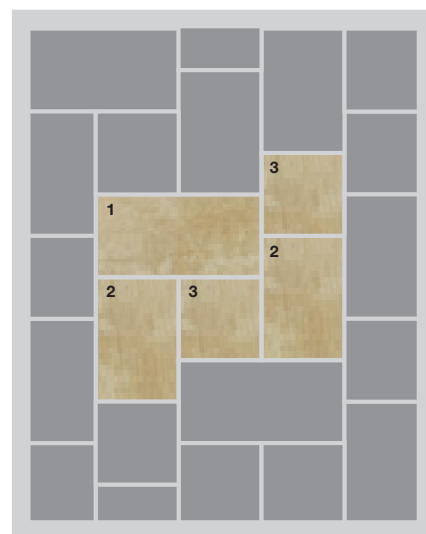
B Tiles shown above
Levantine Ivory Unfilled

No.	Size (cm)	Pieces	m ²
9	40.6 x 40.6	2	0.33
10	20.3 x 40.6	4	0.33
11	20.3 x 20.3	2	0.08
Total		9	0.74



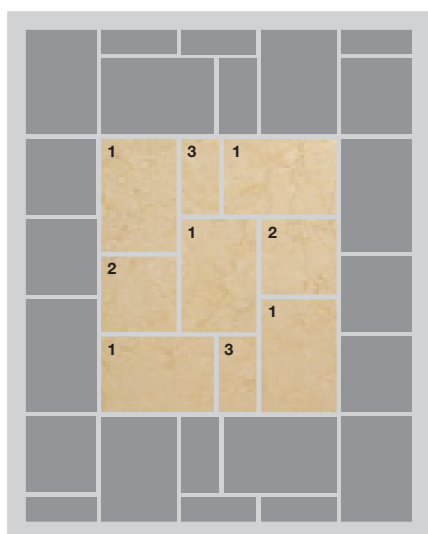
C Tiles shown above
Umbrian Gold Filled & Honed

No.	Size (cm)	Pieces	m ²
1	60 x 40	1	0.24
2	40 x 40	1	0.16
3	20 x 40	1	0.08
4	20 x 20	3	0.12
Total		6	0.60



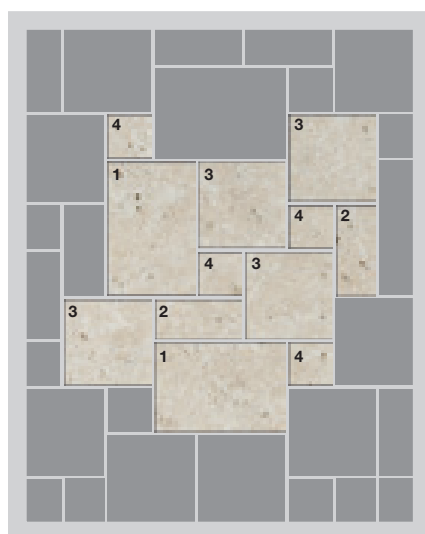
D Tiles shown above
St Sernin

No.	Size (cm)	Pieces	m ²
1	80 x 40	1	0.32
2	60 x 40	2	0.48
3	40 x 40	2	0.32
Total			1.12



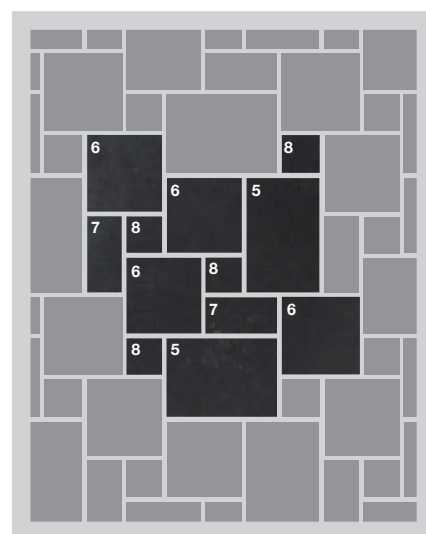
F Tiles shown above
Alexandrian Desert

No.	Size (cm)	Pieces	m ²
1	60 x 40	5	1.2
2	40 x 40	2	0.32
3	20 x 40	2	0.16
Total		9	1.68



G Tiles shown above
Levantine Ivory Manor Set

No.	Size (cm)	Pieces	m ²
1	91.5 x 61	2	1.12
2	61 x 30.5	2	0.37
3	61 x 61	4	1.49
4	30.5 x 30.5	4	0.37
Total			3.348



H Tiles shown above
Greyfriars Abbey Set

No.	Size (cm)	Pieces	m ²
5	82.5 x 55	2	0.91
6	55 x 55	4	1.21
7	55 x 27.35	2	0.3
8	27.35 x 27.35	4	0.3
Total		12	2.72

Usage Guide

Page	Description	Special notes	General Information
4-15	Travertine	Voids or pinholes can sometimes appear on the surface of travertine tiles after installation. No guarantees can be given against this happening. Any voids that do appear can be filled using grout or epoxy resin. It is vital that this feature is taken into account when choosing travertine.	Please check suitability for all products on individual pages throughout the brochure. Refer to the fixing guide at www.originalstyle.com/guides for more detailed information before starting any installation. Original Style cannot accept responsibility for any faults after tiles and mosaics have been fixed, for issues raised in this Important Information or the Fixing Guide once the product has been laid or installed.
16-38	Limestone	Care must be taken when installing any stone tiles, particularly limestone, on any timber substrate. The surface needs to be strong and rigid with no likelihood of movement, otherwise limestone tiles could suffer damage or cracking. Greyfriars Abbey is prone to surface scratching, an inherent feature of this particular stone. Any scratches that occur during use will blend in over time. Alexandrian Desert/Cream/Sun/Sand Limestone can contain areas of iron oxide. If these areas within the tiles are in prolonged contact with water the iron content may react and expand, causing delamination of the surface. The stone must be completely dry when first sealed, the correct amount of sealer must be applied following all manufacturer's instructions.	
46-57	Marble	Occasional veining effects are inherent features of this natural stone. As each piece of marble is individually cut into the various formats of trims, flat tiles, bevel edged tiles and mosaics, there will be differences in shades, tones and vein effects. This might be more noticeable when flat tiles and the smaller cut pieces such as the brick and bevel formats and mosaics are placed adjacent to each other. They may not match exactly however the overall impression will be stunning.	
62-63	Basalt	The surface of Basalt is pitted with tiny holes or voids, an inherent feature of this particular stone. Black grout needs to be used with this product. Grout and clean the tile surface prior to fixing. This will prevent adhesive from being accidentally spread into the voids, which will cause grey speckling. Then grout using black grout in the usual way.	Earthworks tiles and mosaics are not recommended for external use as natural stone is porous to some extent. If laid outside, it is possible water could be absorbed and the tiles become susceptible to frost damage. Stone is a natural product and therefore subject to colour variation, pitting, blemishes, chipped edges, size variation and sometimes staining. Natural stone may fade in UV light. No guarantee can be made against this happening. Adhesive: When installing light coloured porous stone products such as limestone and travertine it is advisable to use a white, fast setting C2 type of adhesive. This will reduce the possibility of water staining on the surface of the tile from the adhesive during the curing process. It will also reduce colour 'show through' on the light coloured stone tile.
64-69	Natural Slate	Delamination (flaking) sometimes occurs with slate due to the nature of this type of stone. If this happens during laying remove all loose pieces. If it happens at a later date, clean then reseal the affected area.	
70-71	Terracotta	As terracotta tiles are very porous they will need to be sealed. Visit www.originalstyle.com/guides for more detailed instructions on sealing and maintenance.	
72-73	Sinks	Although these sinks are re-treated with a resin seal we recommend that they are sealed again before use. Seal in the same way as travertine floor tiles.	Visit www.originalstyle.com/guides for more detailed instructions on adhesives and grouts. Sealing, maintenance and cleaning: natural stone tiles and mosaics need to be sealed before use. Visit www.originalstyle.com/guides for more detailed instructions on sealing, maintenance and cleaning.
90-91	Pebble Mosaics	To avoid visible grout lines, some pebbles may require adjusting slightly so that they interlock with adjoining pebble sheets.	
97	Mixed Format Borders	Some borders contain metal. Extreme caution must be taken when using metal mosaics in an electric shower. Always consult a qualified electrician before installation.	

Key To Symbols

3

Durability



Internal



Walls



Shower/Wet Room Walls

B

Colour Variation



Floors



Hearths



Special Notes

DURABILITY

1. Heavy Traffic: very hard, suitable for most commercial installations.
2. Medium Traffic: suitable for light commercial and residential installations.
3. Light Traffic: suitable for residential use only.
4. Very light traffic: suitable for light residential use e.g. bathroom floors.

COLOUR VARIATION

- A. Limited: relatively uniform but slight variations possible.
- B. Moderate: background colour generally has some variations.
- C. Considerable: variegated in colour and/or veining. Allowances for blending during installation are strongly recommended.

HEARTHES

Please note that black pigments within coal and coal dust can stain pale stone. Please seal before use.

SPECIAL NOTES

- White adhesive recommended.
- ◆ Sealing required.
- ▲ Polished. Polished stone has less slip resistance when wet than unpolished stone.
- ▶ Due to the nature of the product de-lamination may occur.
- Black grout recommended.

✖ MOSAICS AND BORDERS CONTAINING METAL

It is essential that a qualified electrician carries out all electrical work around metal mosaics and any borders containing metal.

Extreme caution must be taken when using metal mosaics in an electric shower. Always consult a qualified electrician before installation.

All natural stone tiles are subject to scuffing and scratching.

Colours can be intensified by using a colour enhancing impregnator.

Please note: natural stone tiles and mosaics may contain a certain amount of iron which, over time, may cause discolouration within the stone. As this is a natural product no guarantees can be given by Original Style against this happening.

These are Original Style's recommendations and are not necessarily exhaustive.

Important Information

Please read through the following information carefully. It will help you select the correct Earthworks tiles and mosaics for your application. For more detailed instructions and before installation, please refer to the Fixing Guide at www.originalstyle.com/guides. We strongly recommend you and your tiler read through this Fixing Guide before installation as Original Style cannot accept responsibility for any faults after tiles and mosaics have been fixed, for issues raised in this Important Information or the Fixing Guide once the product has been laid or installed.

CHOOSING THE RIGHT TILES AND MOSAICS

Please check suitability of your chosen tiles/mosaics on the individual product pages before ordering and installation. You and your tiler should read through this brochure and the Fixing Guide (www.originalstyle.com/guides) to ascertain if the stone is appropriate for your proposed use. If you are uncertain please ask your Original Style retailer for further information.

SAMPLE SERVICE

As stone is a natural product it is prone to shade variations. You should not choose a wall or floor covering based on one sample alone as this may not give an accurate look to the finished, overall look. Samples of stone tiles and mosaic swatch cards can be sent to customers on request. Full size tiles or mosaic sheet samples are chargeable at sample rate. Please see your local stockist for details.

DIMENSIONS AND SIZE VARIATION

Nominal sizes and thicknesses are shown throughout the brochure. All dimensions are subject to a tolerance of $\pm 2\text{mm}$. As some mosaics are hand finished, actual dimensions for individual mosaic sheets may vary from these figures and should be treated as a guide only. If you are mixing tiles of various depths, it is important that you find the deepest tile as this will determine the height of your floor. Allow a five per cent allowance for cutting and wastage when calculating the number of tiles and mosaic sheets required.

We very occasionally encounter changes in format/sizes/ thicknesses that may be different to those published within this brochure. We cannot guarantee against this happening. Please always check availability of your chosen products with Customer Services before placing an order.

We recommend that you allow for an additional 10 per cent when placing your order to ensure that you don't run out during installation and risk ordering further tiles from a different batch. You will inevitably have to cut some tiles during the installation and any mistakes or breakages can be absorbed if you order additional tiles.

SHADE AND TEXTURE VARIATION

Stone is a natural material with inherent variations of colour, marbling, marks and surface textures. There may be some variation in colour from one tile to another. This is usually considered to be an advantage from an aesthetic point of view. It also means that you cannot assume a single sample tile will give you an accurate indication of the colour of the surface as a whole.

The distinctive variations in hue within each tile and between individual pieces enhance the character of the installation. Differences between batches can be even more marked. We therefore recommend that you buy all the tiles at one time. You or your fitter should spend time loosely laying out all the tiles to achieve the most pleasing distribution of shades before fixing them permanently. It is important that the installer understands any patterns or blended effects you want, the requirements for surface preparation and protecting newly laid tiles from on-going work.

Water is used during the cutting process at the quarry, so it is possible that certain travertine, limestone and marble products will still be damp when you receive your delivery. Dry tiles can be lighter in colour than those that are damp, so it is important to let the tiles dry out completely before planning your floor layout, to ensure you have an even spread of tones and colours before permanently fixing them.

NATURAL IMPERFECTIONS

Due to their natural origins some of our tiles may have minor chips or blemishes. Such relatively insignificant imperfections should be considered normal and not the result of poor workmanship. This factor is more apparent in some materials and finishes than others and your choice of tiles should take this into account. Porous and unfilled tiles are clearly less suitable than polished ones for surfaces that need to be kept spotlessly clean. Minor damage such as chipping can sometimes be caused in packing and shipping. This is normal and we recommend that if you do receive any chipped tiles, or if there are any unwanted blemishes, you use them for the cuts during the installation process. Natural stone may also be subject to scuffing and scratching.

ADHESIVES, GROUTS, SEALANTS

Please read through the Fixing Guide at www.originalstyle.com/guides regarding adhesives, grouts and sealants before installation.

MAINTENANCE AND CLEANING

Sweep or vacuum regularly to remove loose dirt. Wipe off any spillages immediately with a clean, damp cloth. Stubborn marks can often be removed with a little white spirit. Please note, the use of certain acid based cleaning products may cause some of the stone to react and change in character.

PHOTOGRAPHY

Owing to variations in studio lighting and printing inks, the tile colours shown in this brochure may differ slightly from those of the actual tiles. It is always advisable to ask your Original Style supplier to show you a sample.

LIMITS OF LIABILITY

Original Style accepts no liability for the faulty installation of its products. In the case of any claim relating to the tiles themselves, Original Style's liability, to the extent permitted by law, is limited to either the replacement of the product or a refund of the cost of the product, and does not extend to cover any consequential loss. Claims must be reported within seven working days from receipt of the tiles. Tiles must be inspected prior to installation and claims cannot be considered after the tiles have been installed. Please be advised that installation constitutes acceptance of the quality, colour, size, texture and shade of the tiles. Original Style warrants that its tiles conform to their description and are fit for their purpose. Original Style makes no other express or implied warranty as to fitness or suitability of the products for particular installations. We extend no guarantees, express or implied, as to wear resistance or maintenance procedures.

It is imperative to follow grout and adhesive manufacturers' instructions regarding their suitability with our products. If in doubt please consult the grout/adhesive stockist from whom you purchased the products. Original Style makes no representations as to the fitness for purpose of third party adhesives and grouts. Please note the use of certain acid based cleaning products may cause some of the tiles to react and change in character.

ACKNOWLEDGEMENTS

We are grateful to the following companies for their assistance with the photographic settings:

Amos Lighting	www.amoslighting.co.uk
Antique Bathrooms of Ivybridge	www.antiquebaths.com
Bathroom Village	www.bathroomvillage.com
Bathstore	www.bathstore.com
C P Hart	www.cphart.co.uk
Crede	+44 (0) 1392 211009
Crosswater	www.crosswater.co.uk
Debenhams	www.debenhams.com
Eclectique	www.eclectique.co.uk
Fagins Antiques	www.faginsantiques.co.uk
Furniture Village	www.furniturevillage.co.uk
Gazco	www.gazco.com
House of Fraser	www.houseoffraser.co.uk
Jane Strickland	www.janestricklandanddaughters.co.uk
John Lewis	www.johnlewis.com
Laura Ashley	www.lauraashley.com
Nest Interiors	www.nestinteriors.com
Orange Tree	www.theorangetree.co.uk
Pilgrim Antiques	www.pilgrimantiques.co.uk
Pink String	+44 (0) 1392 876978
Samuel Heath	www.samuel-heath.com
Stovax	www.stovax.com
The Cook Shop	www.justaddfood.co.uk
Tobys	www.tobysreclamation.com
Woodentops	www.woodentops.co.uk

Utilisations

Page	Description	Notes spéciales	Informations Générales
4-15	Travertin	Des creux ou des piqûres peuvent parfois apparaître à la surface des carreaux en travertin après leur installation. Nous ne pouvons vous donner aucune garantie contre ce phénomène. Tout vide qui apparaît pourra être rempli avec un ciment-joint ou une résine époxy. Il est primordial de prendre en compte cette caractéristique si vous optez pour des carreaux en travertin.	Colle : Pendant l'installation de produits en pierre poreuse de couleur claire telle que la pierre calcaire et le travertin, nous vous recommandons d'utiliser une colle blanche à prise rapide de type C2. De cette manière, vous réduirez les risques d'apparition de taches d'eau à la surface des carreaux lors du séchage de la colle. Visitez www.originalstyle.com/guides pour obtenir des instructions plus détaillées sur les colles et les joints. Imperméabilisation, nettoyage et entretien : les carreaux et les mosaïques en pierre naturelle doivent être imperméabilisés avant d'être utilisés. Visitez www.originalstyle.com/guides pour obtenir des instructions plus détaillées sur l'imperméabilisation, le nettoyage et l'entretien.
16-38	Pierre calcaire	Prenez toujours le plus grand soin lorsque vous installez des carreaux en pierre sur un substrat en bois, surtout s'il s'agit de pierre calcaire. Le substrat devra être solide et rigide, sans possibilité de mouvement, sinon les carreaux en pierre calcaire pourront s'abîmer ou se craqueler. La surface de la pierre Greyfriars Abbey se raye facilement ; il s'agit d'une caractéristique naturelle de cette pierre. Toute rayure apparaissant à la surface finira par s'estomper au fil du temps. Les carreaux Alexandrian Desert/Cream/Sun/Sand Limestone peuvent, par endroits, comporter des zones d'oxyde de fer. Si ces zones sont en contact prolongé avec l'eau, le contenu en fer risque de réagir et de se dilater, entraînant le délaminage de la surface. La pierre doit être complètement sèche lors de l'étanchéisation initiale, et seule la quantité de produit isolant nécessaire doit être utilisée, selon les instructions du fabricant.	
46-57	Marbre	Le marbre présente parfois une apparence veinée, ce qui est une caractéristique normale de cette pierre naturelle. Comme chaque pièce de marbre est découpée individuellement au format des bordures, carreaux plats, carreaux biseautés ou mosaïques, vous observerez des variations de teinte, de ton et d'effet veiné. Ces différences seront parfois plus visibles si vous placez des carreaux plats à côté de pièces de plus petite taille, telles que les formats brique ou biseauté ou des mosaïques. Toutefois, malgré ces différences, l'impression générale sera saisissante.	
62-63	Basalte	De minuscules piqûres ou pores peuvent apparaître à la surface du basalte ; il s'agit d'une caractéristique naturelle de cette pierre. Il est obligatoire d'utiliser des joints noirs avec ce produit. Jointoyez et nettoyez ces carreaux avant de les installer. Ainsi, la colle ne pourra pas s'infiltrer accidentellement dans les creux, ce qui pourrait causer l'apparition de taches grises. Posez ensuite des joints de couleur noire selon la méthode habituelle.	
64-69	Ardoise naturelle	En raison des caractéristiques naturelles de l'ardoise, il arrive qu'elle subisse une délamination (effritement). Dans ce cas, ôtez tous les morceaux détachés. Si la situation se reproduit, appliquez une nouvelle couche d'imperméabilisant sur la zone affectée.	
70-71	Terre cuite	Comme les carreaux en terre cuite sont très poreux, vous devrez les imperméabiliser. Visitez www.originalstyle.com/guides pour obtenir des instructions plus détaillées sur l'imperméabilisation et l'entretien.	
72-73	Éviers	Bien que ces éviers soient traités une seconde fois avec une résine, nous vous recommandons de les imperméabiliser de nouveau avant de les utiliser. Imperméabilisez-les de la même manière que les carreaux de sol en travertin.	
90-91	Mosaïques en galets	Pour éviter que les joints ne soient visibles, vous devrez peut-être ajuster certains galets de manière à ce qu'ils empiètent sur les plaques de galets voisines.	
97	Bordures en matériaux mixtes	Certaines bordures contiennent du métal. Soyez extrêmement vigilants si vous installez des mosaïques en métal dans des douches électriques. Consultez toujours un électricien qualifié avant l'installation.	

Légende des symboles

3

Durabilité

B

Variation De Couleur

HOUSE

Intérieur

FLOOR

Sols

WALL

Murs

FIRE

Âtres

SHOWER

Douches, Murs Des Douches Italiennes et Salles de Bains

REMARKS

Remarques Spécifiques

DURABILITÉ
1. Passage intense : très dur, adapté à la plupart des installations commerciales.
2. Passage normal : adapté aux installations résidentielles et commerciales moins fréquentées.
3. Passage faible : adapté aux installations résidentielles uniquement.
4. Passage très faible : adapté à une utilisation résidentielle peu intense (par exemple : sols de salle de bain).

VARIATION DE COULEUR
A. Limitée : relativement uniforme mais possibilité de légères variations.
B. Modérée : variations dans la couleur du fond.
C. Importante : veinage et carreaux versicolores Il est fortement recommandé de panacher les carreaux lors de l'installation.

ÂTRES
Veuillez noter que les pigments noirs du charbon et de la poussière de charbon peuvent tacher la pierre de couleur claire. Imperméabilisez avant usage.

REMARQUES SPÉCIFIQUES
● Colle blanche recommandée.
◆ Application d'un imperméabilisant nécessaire.
▲ Poli. La pierre polie présente une résistance au glissement inférieure à celle de la pierre non polie lorsqu'elle est mouillée.
▶ La nature du produit est telle que ce dernier peut subir une destratification.
■ Joints noirs recommandés

✖ **MOSAÏQUES ET BORDURES CONTENANT DU MÉTAL**
Il est essentiel qu'un électricien qualifié effectue tous les travaux électriques nécessaires autour de tous les carreaux et bordures contenant du métal.

Veuillez faire extrêmement attention si vous utilisez des mosaïques en métal dans une douche électrique. Veuillez toujours consulter un électricien qualifié avant l'installation.

Tous les carreaux en pierre naturelle sont sujets aux éraflures et aux rayures.

Les couleurs peuvent être intensifiées par un sublimateur.

Veuillez noter : les carreaux en mosaïques et pierre naturelle contiennent parfois un peu de fer qui, au fil du temps, peut entraîner une décoloration de la pierre. Comme il s'agit d'un produit naturel, Original Style n'est pas en mesure de garantir que ce phénomène ne se produira pas.

Il s'agit de recommandations d'Original Style. Leur liste n'est pas nécessairement exhaustive.

Informations Essentielles

Nous vous recommandons de lire avec attention les informations suivantes, qui vous aideront à choisir les carreaux et mosaïques Earthworks les mieux adaptés à l'utilisation envisagée. Pour obtenir des instructions plus détaillées, reportez-vous au Guide d'installation sur www.originalstyle.com/guides avant de procéder à l'installation. Nous vous conseillons vivement de consulter ce Guide d'installation avant de commencer l'installation ; Original Style n'acceptera aucune responsabilité pour toute anomalie qui apparaîtra une fois que le produit aura été posé ou installé, ni pour tout problème préalablement soulevé dans ces Informations Essentielles ou dans notre Guide d'Installation.

CHOISIR LES MOSAÏQUES ET LES CARREAUX ADAPTÉS

Avant de passer commande et d'installer vos carreaux ou mosaïques, reportez-vous aux pages produits correspondantes pour vérifier qu'ils soient adaptés à l'utilisation envisagée. Nous vous conseillons fortement de lire attentivement cette brochure et le Guide d'Installation (www.originalstyle.com/guides) avec votre carreleur afin de vérifier que la pierre choisie est adaptée à votre installation. En cas de doute, n'hésitez pas à consulter votre détaillant Original Style pour de plus amples informations.

ÉCHANTILLONS

La pierre est un produit naturel sujet à des variations de teinte. Ne vous fiez pas à un seul échantillon pour choisir votre revêtement de sol ou de mur car il ne permettra pas toujours de déterminer précisément l'effet général une fois le produit posé. Nos clients peuvent demander à recevoir des échantillons de pierre et des cartes-échantillons de mosaïque. Les échantillons sous forme de plaques de mosaïque ou de carreaux complets sont facturés au tarif échantillon. Nous vous invitons à consulter votre revendeur local pour plus d'informations.

DIMENSIONS ET VARIATIONS DE TAILLE

Toutes les dimensions et épaisseurs indiquées dans cette brochure sont nominales. Toutes les dimensions sont sujettes à une tolérance de $\pm 2\text{mm}$. Comme certaines mosaïques sont finies à la main, les dimensions réelles de chaque plaque de mosaïque peuvent varier et ne sont donc données qu'à titre indicatif. Si vous utilisez des pierres de différentes épaisseurs, il est important d'identifier les carreaux les plus épais, qui détermineront la hauteur du sol. Lorsque vous calculez le nombre de carreaux ou de plaques de mosaïque dont vous avez besoin, n'oubliez pas de prendre en compte les découpes et déchets éventuels, qui représentent en moyenne 5% du total.

Vous constaterez exceptionnellement des variations de taille/format/épaisseur par rapport aux dimensions indiquées dans cette brochure. Nous ne pouvons pas garantir que ce phénomène ne se produira pas. Avant de passer commande, veuillez toujours vérifier avec notre Service Clientèle que les produits de votre choix sont disponibles.

Nous vous recommandons de prévoir 10 % de carreaux supplémentaires lorsque vous passez commande, de manière à éviter de vous trouver à court pendant l'installation. Vous risqueriez alors de ne pas retrouver de carreaux provenant du même lot. Vous devrez inévitablement couper certains carreaux pendant la pose. Les carreaux supplémentaires permettent de compenser les éventuelles erreurs ou les bris.

VARIATIONS DE TEINTE ET DE TEXTURE

La pierre est un matériau naturel qui présente des variations de couleur et de texture ainsi que des marques et des marbrures. La surface peut présenter des variations de couleur d'un carreau à l'autre, ce qui est généralement considéré comme un avantage du point de vue esthétique. Mais cela signifie également que vous ne pouvez pas vous fier à un seul échantillon pour connaître la couleur générale de la surface une fois la pose terminée.

Ces variations distinctives d'un carreau à un autre et entre chaque élément individuel donnent tout son caractère à votre installation. Les différences peuvent être davantage marquées d'un lot à l'autre. Nous vous recommandons donc vivement d'acheter tous vos carreaux en une seule fois. En outre, il est préférable que vous-même ou votre carreleur preniez le temps de disposer librement les carreaux au sol, avant de les installer, afin de répartir les variations de teintes d'une manière qui soit agréable à l'œil. Il est particulièrement important que l'installateur comprenne les exigences liées à la préparation de la surface, au motif ou à l'effet mélangé que vous cherchez à créer et comment protéger les carreaux déjà installés jusqu'à ce que les travaux soient terminés.

Le processus de découpe en carrière utilise de l'eau. Il est donc possible que certains travertins, calcaires et marbres soient toujours humides à la livraison. Les carreaux secs peuvent être légèrement plus clairs que les carreaux mouillés. Il est donc important de laisser sécher complètement le carrelage avant de le poser, de manière à ce que les variations de teinte et de couleur soient réparties uniformément.

IMPERFECTIONS NATURELLES

En raison de leur origine naturelle, certains de nos carreaux peuvent présenter des petites taches ou de légers éclats. Ces imperfections, relativement insignifiantes, doivent être considérées comme normales et ne sont pas dues à un défaut de fabrication. Ce facteur est plus évident avec certains matériaux et certaines finitions que d'autres, et vous devriez toujours le prendre en considération avant de faire votre choix. Les carreaux poreux et non remplis sont beaucoup moins adaptés que les carreaux polis aux surfaces qui doivent être maintenues impeccables. Parfois, les carreaux subissent de légers dommages, tels que des ébréchures, au cours de l'emballage ou de l'expédition ; ceci est normal. Si certains carreaux présentent des éclats ou des taches indésirables au moment de leur réception, utilisez-les pour les découpes au cours du processus d'installation. Tous les carreaux en pierre naturelle sont sensibles aux éraflures et aux rayures.

COLLES, JOINTS, MASTICS D'ÉTANCHÉITÉ

Veuillez consulter le Guide d'installation sur www.originalstyle.com/guides pour obtenir des informations détaillées sur les colles, joints et mastics d'étanchéité.

ENTRETIEN ET NETTOYAGE

Balayez ou passez l'aspirateur régulièrement pour enlever les saletés non incrustées. Essuyez immédiatement les liquides renversés à l'aide d'un chiffon propre et humide. Vous pouvez utiliser un chiffon imbibé de white spirit pour enlever les taches tenaces. Veuillez noter que l'utilisation de certains produits nettoyants à base d'acide peut provoquer des réactions sur certaines pierres et en modifier les caractéristiques.

PHOTOGRAPHIES

L'éclairage en studio et les encres utilisées pour l'impression peuvent affecter la couleur des carreaux présentés dans ce catalogue. Avant de passer commande, il est toujours préférable de vous procurer des échantillons auprès d'un revendeur Original Style.

LIMITATION DE RESPONSABILITÉ

Original Style se dégage de toute responsabilité en cas d'installation incorrecte de ses produits. En cas de réclamation relative aux carreaux eux-mêmes, la responsabilité d'Original Style sera confinée, dans la limite autorisée par la loi, au remplacement du produit ou au remboursement du prix du produit, et ne couvrira pas les dommages indirects. Toute réclamation doit être effectuée dans les sept jours suivant la réception des carreaux. Les carreaux doivent être inspectés avant installation. Aucune réclamation ne sera prise en compte une fois les carreaux installés. Notez que l'installation du carrelage constitue l'acceptation de la qualité, de la couleur, de la texture, de la taille et de la teinte des carreaux. Original Style garantit que ses carreaux sont conformes au descriptif fourni et qu'ils sont adaptés à l'usage pour lequel ils sont prévus. Original Style ne formule aucune garantie expresse ou implicite supplémentaire vis-à-vis de l'adéquation ou de la compatibilité de ses produits à des installations spécifiques. Nous ne formulons aucune garantie, expresse ou implicite, vis-à-vis de la résistance à l'usure ou des procédures d'entretien.

Il est impératif de suivre les instructions des fabricants de colles et de ciments-joints afin d'en vérifier la compatibilité avec nos produits. En cas de doute, consultez le revendeur qui vous aura fourni la colle ou le ciment-joint. Original Style n'assumera aucune responsabilité en ce qui concerne la compatibilité ou l'usage de colles et de ciments-joints tiers. Veuillez noter que l'utilisation de certains produits nettoyants à base d'acide peut provoquer des réactions sur certains carreaux et en modifier les caractéristiques.

Gebruuchsanweisung

Seite	Beschreibung	Besondere Hinweise	Allgemeine Informationen
4-15	Travertin	Auf der Oberfläche von Travertin Fliesen können nach der Installation manchmal Hohlräume oder winzige Löcher auftreten. Alle auftretenden Hohlräume können mit Fugenmörtel oder Epoxydharz gefüllt werden. Entscheidend ist, dass Sie um diese Besonderheiten wissen, wenn Sie sich für Travertin entscheiden.	<p>Bitte überprüfen Sie die Eignung für alle Produkte auf einzelnen Seiten in der gesamten Broschüre. Beachten Sie bitte die Verlegeanleitung unter www.originalstyle.com/guides für weitere Informationen, bevor Sie mit der Installation beginnen. Original Style kann nach dem Verlegen von Fliesen oder Mosaiken keine Haftung für Probleme übernehmen, die in diesen wichtigen Informationen oder in der Installationsanleitung behandelt wurden.</p> <p>Earthworks Fliesen und Mosaik werden nicht für den externen Einsatz empfohlen, da Naturstein zu einem gewissen Grad porös ist. Falls sie in Außenbereichen verlegt werden, können Sie Wasser absorbieren, wodurch sie anfällig für Frostschäden sind.</p> <p>Stein ist ein natürliches Material, bei dem es daher zu Farbabweichungen, Pitting (Grübchenbildung), Schönheitsfehlern, Kantenbrüchen, Größenschwankungen und gelegentlicher Fleckenbildung kommen kann. Naturstein kann unter UV-Einwirkung verblassen und wir können dafür keine Garantie geben.</p> <p>Kleber: Beim Verlegen hellfarbiger poröser Steinprodukte wie Kalkstein und Travertin ist es ratsam, einen weißen, schnell härtenden C2-Kleber zu verwenden. Dadurch verringert sich die Wahrscheinlichkeit, dass sich beim Aushärten des Klebers Wasserflecken auf der Fliesenoberfläche bilden. Ausführliche Informationen zu Klebern und Fugenmörtel erhalten Sie unter www.originalstyle.com/guides.</p> <p>Versiegelung, Pflege und Reinigung: Natursteinfliesen und Mosaik müssen vor der Verwendung versiegelt werden. Ausführliche Informationen zu Versiegelung, Pflege und Reinigung erhalten Sie unter www.originalstyle.com/guides.</p>
16-38	Kalkstein	Bei der Installation von Steinfliesen, insbesondere Kalkstein auf Holzuntergrund, ist Sorgfalt geboten. Die Oberfläche muss fest und unnachgiebig sein und jeglicher Bewegung widerstehen, andernfalls könnten die Kalksteinfliesen beschädigt werden oder Risse erhalten. Bitte beachten Sie, dass Greyfriars Abbey zu Verkratzungen der Oberfläche neigt. Dies ist eine diesem bestimmten Kalkstein eigene Eigenschaft. Alle während der Nutzung auftretenden Kratzer werden im Laufe der Zeit weniger auffällig. Alexandrian Desert/ Cream/Sun/Sand Limestone kann Bereiche mit Eisenoxid enthalten. Wenn diese Bereiche in den Fliesen in längerem Kontakt mit Wasser stehen, kann der Eisengehalt reagieren und expandieren, so dass es zu einer Delaminierung der Oberfläche kommt. Der Stein muss beim erstmaligen Versiegeln absolut trocken sein. Ferner muss die richtige Menge Versiegeler entsprechend den Anweisungen des Herstellers aufgetragen werden.	
46-57	Marmor	Gelegentliche Maserungseffekte sind immanente Eigenschaften dieses Natursteins. Da jedes Stück Marmor individuell auf verschiedene Profil-, Facetten-, Fliesen- und Mosaikformate geschnitten wird, sind Unterschiede in Schattierungen, Farbtönen und Maserung unvermeidlich. Dies wird gelegentlich sichtbar, wenn flache Fliesen und kleinere, geschnittene Stücke wie Ziegel- und Facettenformate und Mosaiken nebeneinander angeordnet werden. Unter Umständen kann es passieren, dass sie nicht exakt aufeinander abgestimmt sind. Dennoch ist die Gesamtwirkung beeindruckend.	
62-63	Basalt	Eine der Eigenheiten von Basalt ist, dass die Oberfläche winzige Löcher oder Hohlräume aufweist. Bitte beachten Sie, dass Sie für dieses Produkt schwarzen Fugenmörtel verwenden müssen. Wir empfehlen, dass diese Fliesen vor dem Verkleben verfugt und gereinigt werden. So wird verhindert, dass Fliesenkleber aus Versehen in die Hohlräume gelangt, was zu grauen Sprengeln führen würde. Verwenden Sie dann den schwarzen Fugenmörtel in der üblichen Weise.	
64-69	Schiefer	Aufgrund der Art des Steins kann es bei Schieferplatten zu Abblätterungen (Ablösungen) kommen. Sollte dies beim Verlegen passieren, entfernen Sie alle losen Stücke. Falls dies zu einem späteren Zeitpunkt geschieht, reinigen Sie den Boden und versiegeln Sie anschließend den betroffenen Bereich erneut.	
70-71	Terrakotta	Da Terrakotta Fliesen sehr porös sind, müssen sie versiegelt werden. Ausführliche Informationen zu Versiegelung und Pflege erhalten Sie unter www.originalstyle.com/guides .	
72-73	Spülbecken	Obwohl diese Spülbecken mit einer Kunstharzversiegelung nachbehandelt werden, empfehlen wir sie vor der Verwendung erneut zu versiegeln. Die Versiegelung erfolgt in der gleichen Weise wie bei Travertin Bodenfliesen.	
90-91	Kieselmosaiken	Um sichtbare Fugenlinien zu vermeiden, müssen einige Kiesel möglicherweise leicht eingepasst werden, so dass sie in angrenzende Kieselmaten greifen.	
97	Verschiedene Bordüren	Einige Bordüren enthalten Metall. Besondere Sorgfalt ist erforderlich, wenn Metallmosaikfliesen in einer elektrischen Dusche verwendet werden. Ziehen Sie vor der Installation unbedingt einen Elektrofachmann zu Rate.	

Zeichenerklärung

3

Beständigkeit

Innen

Wände

Dusche / Nasszellenwände

B

Farbabweichung

Böden

Kamine

Besondere Hinweise

<p>BESTÄNDIGKEIT</p> <ol style="list-style-type: none"> Starke Beanspruchung: sehr hart, eignet sich für die meisten gewerblichen Installationen. Mittlere Beanspruchung: eignet sich für leichte gewerbliche und private Installationen. Leichte Beanspruchung: eignet sich nur in privaten Wohnbereichen. Sehr leichte Beanspruchung: eignet sich für leichte Verwendungen in privaten Wohnbereichen, z.B. Badezimmerböden. <p>FARBABWEICHUNG</p> <p>A. eingeschränkt: relativ einheitlich, leichte Abweichungen sind jedoch möglich.</p> <p>B. mittel: Hintergrundfarbe weist im Allgemeinen einige Abweichungen auf.</p> <p>C. deutlich: vielfältig in Farbe und Melierung. Wir empfehlen ausdrücklich, vor der Installation für eine gute Durchmischung der Farbvarianten zu sorgen.</p>	<p>KAMINSTELLEN</p> <p>Bitte beachten Sie, dass die Kohlepigmente in Asche und Briketts zu Verfärbungen heller Natursteine führen können. Bitte vor der Verlegung unbedingt versiegeln.</p> <p>BESONDERE HINWEISE</p> <ul style="list-style-type: none"> ● wir empfehlen weißen Fliesenkleber. ◆ Versiegelung erforderlich. ▲ poliert: polierter Naturstein bietet bei Nässe geringeren Rutschwiderstand als nicht polierter Stein. ▶ aufgrund der Natur des Produkts kann es in seltenen Fällen zu Abplatzungen kommen. ■ wir empfehlen schwarze Fugenmasse. <p>✖ MOSAIKFLIESEN UND BORDÜREN AUS UND MIT METALL</p> <p>Alle elektrischen Arbeiten in der Nähe von Metallmosaikfliesen bzw. Bordüren müssen von einem qualifizierten Elektriker ausgeführt werden. Besondere Sorgfalt ist erforderlich, wenn Metallmosaikfliesen in einer</p>	<p>elektrischen Dusche verwendet werden. Ziehen Sie vor der Installation unbedingt immer einen Elektrofachmann zu Rate.</p> <p>Alle natürlichen Steinfliesen sind Abrieb und Kratzern ausgesetzt.</p> <p>Farben können durch farbverstärkende Imprägniermittel intensiviert werden.</p> <p>Bitte beachten: Natürliche Steinfliesen und Mosaik können einen gewissen Eisengehalt aufweisen, der mit der Zeit zu einer Verfärbung im Stein führen kann. Da es sich hier um ein Naturprodukt handelt, kann Original Style keine Gewährleistung gegen diesen Vorgang geben.</p> <p>Original Style übernimmt für die Richtigkeit dieser Angaben keine Haftung.</p>
---	---	---

Wichtige Informationen

Lesen Sie bitte die folgenden Informationen aufmerksam durch. Sie helfen Ihnen bei der Auswahl von den richtigen Earthworks Fliesen und Mosaiken für Ihre Anwendung. Weitere detaillierte Anweisungen und Hinweise vor der Installation finden Sie in der Verlegeanleitung unter www.originalstyle.com/guides. Wir empfehlen dringend, dass Sie und Ihr Fliesenleger die Installationsanleitung vor dem Verlegen lesen, da Original Style nach dem Verlegen von Fliesen oder Mosaiken keine Haftung für Probleme übernehmen kann, die in diesen wichtigen Informationen oder in der Installationsanleitung behandelt wurden.

ENTSCHEIDEN SIE SICH FÜR DIE RICHTIGEN FLIESEN UND MOSAIKEN

Bitte überprüfen Sie die Eignung der von Ihnen gewählten Fliesen / Mosaiken auf den einzelnen Produktseiten vor der Bestellung und Installation. Wir empfehlen Ihnen und Ihrem Fliesenleger dringend, diese Broschüre und die Installationsanleitung (www.originalstyle.com/guides) zu lesen, um festzustellen, ob der jeweilige Stein für die beabsichtigte Verwendung geeignet ist. Im Zweifelsfall wenden Sie sich an Ihren Original Style Fachhändler, der Sie gerne berät.

MUSTER-SERVICE

Stein ist ein Naturprodukt und neigt daher zu Variationen in den Farbnuancen. Sie sollten einen Wand- oder Bodenbelag nicht nur aufgrund eines einzigen Musterstückes wählen, da ein Muster allein wahrscheinlich nicht den Gesamteindruck nach Fertigstellung Ihres Vorhabens vermitteln kann. Muster der Natursteine und Mosaik-Musterkarten können Ihnen auf Wunsch zugeschickt werden. Fliesen in voller Größe und ganze Mosaikmatten werden zum Mustersatz berechnet. Für weitere Einzelheiten wenden Sie sich bitte an Ihren Fachhändler vor Ort.

GRÖSSEN- UND MASSABWEICHUNGEN

In dieser Broschüre werden Sollmaße und Solldicken angegeben. Alle genannten Abmessungen können Abweichungen von ± 2 mm aufweisen. Da einige Mosaik von Hand gefertigt werden, können die tatsächlichen Maße einzelner Mosaikmatten von diesen Sollwerten abweichen und sind daher nur als Anhaltspunkt zu betrachten. Falls Sie Fliesen verschiedener Dicken mischen, ist es wichtig, die dickste Fliese zu bestimmen, da sich daraus die Höhe Ihre Bodens ergibt. Planen Sie bei der Berechnung der erforderlichen Anzahl an Fliesen und Mosaikmatten bitte 5 % zusätzlich für Verschnitt und Reststücke ein.

Da Stein ein Naturprodukt ist, begegnen wir gelegentlich der Problematik veränderter Formate, Abmessungen und Stärken, die gegebenenfalls von den in dieser Broschüre veröffentlichten Maßen abweichen. Wir können diesbezüglich keine Garantien geben. Bitte klären Sie daher immer die Verfügbarkeit des von Ihnen ausgesuchten Produktes mit dem Kundenservice ab, bevor Sie Ihren Auftrag erteilen.

Wir empfehlen, dass Sie zusätzliche 10 Prozent mit einrechnen, wenn Sie Ihre Bestellung abgeben, um sicherzustellen, dass Ihnen während der Installation nicht das Material ausgeht und Sie die Bestellung weiterer Fliesen aus einer anderen Charge riskieren müssen. Es wird sich nicht vermeiden lassen, dass Sie einige Fliesen während der Installation zerschneiden müssen; durch die Bestellung zusätzlicher Fliesen können Fehler oder Brüche wettgemacht werden.

FARBNUANCEN UND VARIATIONEN DER STRUKTUR / TEXTUR

Stein ist ein natürliches Material mit den dazu gehörigen Abweichungen von Farbe, Maserung, Markierungen und Oberflächenstrukturen. Die Fliesen können daher untereinander Farbabweichungen aufweisen. Aus ästhetischer Sicht wird gerade dies in der Regel als Vorteil angesehen. Es bedeutet aber auch, dass Sie nicht davon ausgehen können, dass eine einzige Musterfliese Ihnen einen genauen Anhaltspunkt für die Farbe der Gesamtoberfläche gibt.

Die charakteristischen Abweichungen des Farbtons in jeder Fliese und zwischen den einzelnen Fliesen untereinander verstärken den Charakter der Installation. Unterschiede zwischen den einzelnen Chargen können noch deutlicher ausfallen. Aus diesem Grund empfehlen wir dringend, dass Sie alle Fliesen auf einmal kaufen. Wir empfehlen Ihnen auch, dass Sie oder Ihr Fliesenleger alle Fliesen zuerst lose verlegen, um die attraktivste Verteilung der Farbnuancen zu erreichen, bevor Sie die Fliesen dauerhaft fixieren.

Es ist wichtig, dass Ihr Fliesenleger den von Ihnen gewünschten Muster- bzw. Mischefekt und die Maßnahmen zur Oberflächenvorbereitung kennt sowie die frisch verlegten Fliesen vor Beschädigung durch laufende Arbeiten schützt.

Während des Schneidprozesses im Steinbruch wird Wasser verwendet, daher ist es möglich, dass einige Travertine, Kalksteine und Marmorsteine immer noch feucht sind, wenn Sie Ihre Lieferung erhalten. Die Farben können bei trockenen Fliesen heller als bei feuchten Fliesen sein, daher ist es wichtig, die Fliesen vollständig trocknen zu lassen, bevor Sie die Anordnung auf dem Boden planen, um so sicherzustellen, dass sie eine gleichmäßige Verteilung der Farbtöne und Farben erreichen und sie erst dann dauerhaft zu fixieren.

NATÜRLICHE UNVOLLKOMMENHEITEN

Aufgrund ihres natürlichen Ursprungs können einige unserer Fliesen geringfügige Absplitterungen oder Fehler aufweisen. Derartige geringfügige Unvollkommenheiten sollten als normal und nicht als Ergebnis von schlechter Herstellungsarbeit angesehen werden. Dieser Faktor ist bei einigen Materialien und Ausführungen offensichtlicher als bei anderen. Sie sollten dies bei Ihrer Fliesenwahl berücksichtigen. Poröse und nicht gefüllte Fliesen sind für Oberflächen, die makellos sauber gehalten werden müssen, weniger geeignet als polierte Fliesen. Bei Verpackung und Versand können manchmal geringfügige Schäden wie Absplitterungen verursacht werden. Das ist völlig normal; falls Sie gesplittete Fliesen erhalten oder falls die Fliesen unerwünschte Flecken aufweisen, empfehlen wir, diese Fliesen als Zuschnitte während des Installationsvorgangs zu verwenden. Alle natürlichen Steinfliesen sind Abrieb und Kratzern ausgesetzt.

KLEBER, FUGENMÖRTEL UND DICHTUNGSMITTEL

Bitte lesen Sie die Verlegeanleitung unter www.originalstyle.com/guides über Kleber, Fugenmörtel und Dichtungsmittel vor der Installation.

INSTANDHALTUNG UND PFLEGE

kehren oder staubsaugen Sie regelmäßig, um losen Schmutz zu entfernen. Wischen Sie verschüttete Flüssigkeiten sofort mit einem sauberen, feuchten Tuch auf. Hartnäckige Flecken können oft mit etwas Terpentinersatz entfernt werden. Die Verwendung von säurebasierten Reinigungsprodukten kann bei einigen Steinen Reaktionen und eine Änderung der Eigenschaften hervorrufen.

FOTOGRAFIE

Aufgrund von Abweichungen bei Studiobeleuchtung und Druckfarben können die Fliesenfarben, die in dieser Broschüre dargestellt sind, leicht von den Farben der tatsächlichen Fliesen abweichen. Bevor Sie Ihre Auswahl treffen, sollten Sie immer einen Original Style Fachhändler nach Mustern fragen.

HAFTUNGSBESCHRÄNKUNGEN

Original Style übernimmt für die fehlerhafte Installation seiner Fliesen keine Haftung. Sollte es Reklamationen bezüglich der Fliesen selbst geben, dann beschränkt sich die gesetzlich eingeräumte Haftung von Original Style lediglich auf Artikelaustausch oder Kostenrückerstattung. Weitere Schäden werden nicht abgedeckt. Vor der Installation sind die Fliesen zu prüfen. Nachträgliche Reklamationen können nicht berücksichtigt werden. Fliesen müssen vor der Installation kontrolliert werden. Eine Reklamation nach der Installation ist nicht möglich. Bitte beachten Sie, dass Sie mit der Installation die Qualität, Farbgebung, Textur oder Schattierung der Fliesen akzeptieren und keine Beanstandungen anzeigen. Original Style gewährleistet die beschreibungs- und zweckgemäße Fabrikationsausführung der Fliesen. Original Style gibt keine weiteren ausdrücklichen oder impliziten Garantien hinsichtlich der Eignung der Artikel für besondere Installationsarten. Wir geben weder ausdrücklich noch implizit eine Garantieverlängerung auf Abnutzungsverhalten oder Wartungsarbeiten.

Befolgen Sie unbedingt die Anweisungen der Hersteller von Fugenmörtel und Kleber hinsichtlich der Eignung für unsere Produkte. Im Zweifelsfall wenden Sie sich bitte an den Fachhändler für Fugenmörtel/Fliesenkleber, von dem Sie die Produkte gekauft haben. Original Style übernimmt keine Verantwortung bezüglich der Gebrauchstauglichkeit von Klebern und Fugenmörtel von Drittanbietern. Die Verwendung von säurebasierten Reinigungsprodukten kann bei einigen Steinen Reaktionen und eine Änderung der Eigenschaften hervorrufen.

Een beknopte handleiding voor het gebruik

Pagina	Omschrijving	Speciale aantekeningen	Belangrijke Informatie
4-15	Travertijn	Openingen of gaatjes kunnen soms na het zetten verschijnen in het oppervlak van travertijntegels. We kunnen niet garanderen dat dit niet gebeurt. Openingen die verschijnen kunnen worden opgevuld met voegmiddel of epoxyhars. Het is van cruciaal belang dat rekening wordt gehouden met deze eigenschap als wordt gekozen voor travertijn.	<p>Controleer de geschiktheid van alle producten op de desbetreffende pagina's in de brochure. Raadpleeg de installatiegids op www.originalstyle.com/guides voor gedetailleerdere informatie voordat u begint met uw installatie.</p> <p>Original Style is niet verantwoordelijk voor defecten nadat tegels en mozaïektegels zijn gezet. Original Style is ook niet verantwoordelijk voor problemen die in de 'belangrijke informatie' of de installatiegids worden vermeld nadat het product is gelegd of geïnstalleerd.</p> <p>De Earthworks-tegels en mozaïektegels worden niet aanbevolen voor buitengebruik, omdat de natuurstenen producten in zekere mate poreus zijn. Als de tegels buiten worden gelegd, kunnen ze water absorberen en door vorst beschadigd raken.</p> <p>Steen is een natuurlijk product met deze natuurlijke verschijnselen: kleurvariaties, putvorming, vlekken, afgebroken randen, variërende groottes en soms verkleuringen. Natuursteen kan in UV-licht verbleken. We kunnen niet garanderen dat dit niet gebeurt.</p> <p>Lijm: Voor het zetten van lichtgekleurde, poreuze steenproducten, zoals leisteen en travertijn, raden we aan dat u een witte, sneldrogende lijm van het type C2 gebruikt. Dit maakt de kans kleiner dat water het oppervlak van de tegels bevlekt als gevolg van de lijm tijdens het uitharden. Ga naar www.originalstyle.com/guides voor gedetailleerdere instructies over lijmen en voegmiddelen.</p> <p>Afdichten, onderhouden en schoonmaken: de natuurstenen tegels en mozaïektegels moeten worden afdicht voorafgaand aan gebruik. Ga naar www.originalstyle.com/guides voor gedetailleerdere instructies over afdichten, onderhouden en schoonmaken.</p>
16-38	Kalksteen	Wees voorzichtig met het installeren van stenen tegels, en vooral kalksteen, op houten onderlagen. Het oppervlak dient sterk en solide te zijn en mag niet bewegen. Anders kunnen de kalkstenen tegels beschadigd raken of breken. Het oppervlak van Greyfriars Abbey kan bekrast raken: dit is een inherente eigenschap van dit type steen. Deze krassen worden met verloop van tijd minder zichtbaar. Alexandrian Desert/Cream/Sun/Sand Limestone kunnen ijzeroxide bevatten. Als de delen van de tegels die dit bevatten langdurig in aanraking komen met water, dan kan het ijzer reageren en in omvang toenemen, hetgeen leidt tot losrakende lijmverbindingen. Als de tegels voor het eerst wordt geseald, dan moeten deze volledig droog zijn. Ook moet de juiste hoeveelheid afdichtingsmiddel worden aangebracht volgens de aanwijzingen van de fabrikant.	
46-57	Marmer	Op deze natuurstenen kunnen soms aderachtige effecten zichtbaar zijn. Omdat elk stuk marmer afzonderlijk wordt gesneden in verschillende formaten randen, platte tegels, afgeschuinde tegels en mozaïektegels, kunnen er verschillende nuancerings, tinten en dooradering zijn. Dit kan beter zichtbaar zijn als platte tegels en de kleinere gesneden stukken, zoals de bakstenen, afgeschuinde varianten en mozaïektegels, naast elkaar worden geplaatst. Ze sluiten niet perfect op elkaar aan, maar het overkoepelende effect is adembenemend.	
62-63	Basalt	Het oppervlak van basalt bevat vele kleine gaatjes of openingen: dit is een inherente eigenschap van dit type steen. Gebruik zwart voegmiddel voor dit product. Maak het oppervlak schoon en breng het voegmiddel aan voordat de tegels worden gezet. Zodoende wordt geen lijm aangebracht in de gaatjes, hetgeen grijze stippels zou veroorzaken. Breng dan het zwarte voegmiddel op de gebruikelijke manier aan.	
64-69	Natuurleiste	Losrakend steen (afschilfering) gebeurt soms bij leisteen als gevolg van de aard van dit type steen. Verwijder alle loszittende delen als dit gebeurt tijdens de installatie. Als dit later gebeurt, dan maakt u het desbetreffende deel schoon en impregneert u het opnieuw.	
70-71	Terracotta	Terracottategels moeten worden afdicht, want ze zijn erg poreus. Ga naar www.originalstyle.com/guides voor gedetailleerdere instructies over afdichten en onderhouden.	
72-73	Gootstenen	Hoewel deze gootstenen extra zijn behandeld met een harssealer, raden we aan dat u ze nogmaals afdicht voor gebruik. U dicht ze op dezelfde wijze af als travertijnvloertegels.	
90-91	Kiezelmozaïektegels	Om zichtbare voegen te voorkomen, moeten sommige kiezels misschien licht worden gecorrigeerd voor een mooiere overgang tussen de kiezelmozaïekmatjes.	
97	Randen met verschillende formaten	Sommige randen bevatten metaal. Bij het gebruik van metalen mozaïektegels in een elektrische douche is de grootste voorzichtigheid geboden. Raadpleeg altijd een gediplomeerde elektricien voordat u begint.	

Uitleg van symbolen

 Duurzaamheid	 Binnen	 Muren	 Natte Ruimtes (Douche) Wanden
 Kleurvariatie	 Vloeren	 Openhaarden	 Speciale Aantekeningen

<p>DUURZAAMHEID</p> <p>1. Zwaar verkeer: zeer hard, geschikt voor de meeste commerciële installaties.</p> <p>2. Gematigd verkeer: geschikt voor lichtcommerciële en residentiële installaties.</p> <p>3. Licht verkeer: alleen geschikt voor residentieel gebruik.</p> <p>4. Zeer licht verkeer: geschikt voor lichtresidentieel gebruik, zoals badkamervloeren.</p> <p>KLEURVARIATIE</p> <p>A. Beperkt: betrekkelijk uniform, maar geringe variaties mogelijk.</p> <p>B. Gematigd: achtergrondkleur vertoont gewoonlijk enige variatie.</p> <p>C. Aanzienlijk: variaties in kleur en/of naden. Het is sterk aanbevolen om tegels goed te mengen voor het aanbrengen.</p>	<p>OPENHAARDEN</p> <p>Let op: het zwarte pigment in kool en het stof van de kolen kan leiden tot vlekken op lichtgekleurde stenen. Impregneer deze voor gebruik.</p> <p>SPECIALE AANTEKENINGEN</p> <ul style="list-style-type: none">● Witte lijmen worden aanbevolen.◆ Impregneren verplicht.▲ Gepolijst. Gepolijst steen is minder slijpbestendig als het nat is dan ongepolijst steen.● Vanwege de aard van het product kunnen losrakende lijmverbindingen (delaminatie) niet worden uitgesloten.■ Zwart voegmiddel aanbevolen. <p>✖ MOZAÏEKTEGELS EN RANDEN DIE METAAL BEVATTEN</p> <p>Het is van essentieel belang dat bij mozaïektegels en randen die metaal bevatten alle elektriciteitswerkzaamheden worden</p>	<p>uitgevoerd door een gediplomeerde elektricien. Bij het gebruik van metalen mozaïektegels in een elektrische douche is de grootste voorzichtigheid geboden. Raadpleeg altijd een gediplomeerde elektricien voordat u begint.</p> <p>Alle natuursteentegels kunnen beschadigd en bekrast raken.</p> <p>Kleuren kunnen worden versterkt door een kleurversterkend impregneermiddel te gebruiken.</p> <p>Let op: natuursteentegels en mozaïektegels kunnen een zekere hoeveelheid ijzer bevatten. IJzer kan met het verloop van tijd verkleuring van de tegels veroorzaken. Aangezien dit een natuurlijk product is, kan Original Style niet garanderen dat dit niet gebeurt.</p> <p>Deze aanbevelingen van Original Style zijn niet per se volledig.</p>
---	--	--

Belangrijke Informatie

Lees onderstaande informatie zorgvuldig door. Hiermee kunt u de juiste Earthworks-tegels en mozaïektegels kiezen voor uw toepassing. Voor gedetailleerdere aanwijzingen en voorafgaand aan de installatie raadpleegt u de installatiegids op originalstyle.com/guides. We raden ten eerste aan dat u en uw tegelzetter deze installatiegids doornemen voorafgaand aan het zetten, omdat Original Style niet verantwoordelijk is voor defecten nadat tegels en mozaïektegels zijn gezet of voor problemen die zijn vermeld in deze belangrijke informatie of de installatiegids nadat het product is gelegd of geïnstalleerd.

DE JUISTE TEGELS EN MOZAÏEKTEGELS KIEZEN

Controleer de geschiktheid van de door u gekozen tegels/mozaïektegels op de afzonderlijke productpagina's voordat u ze bestelt en installeert. U en uw tegelzetter zouden deze brochure en de installatiegids (www.originalstyle.com/guides) door moeten lezen om er zeker van te zijn dat de tegels geschikt zijn voor het door u gewenste gebruik. Vraag in geval van twijfel uw Original Style-detailhandelaar om meer informatie.

MONSTERS

Aangezien steen is een natuurlijk product is, kan hierdoor de kleurnuancering variëren. Het is niet verstandig om muur- of vloertegels te kiezen op basis van slechts één monster, aangezien dit niet noodzakelijkerwijs een juiste afspiegeling is van het voltooid, algehele eindresultaat. Monsters van stenen tegels en mozaïekmatjes kunnen op verzoek worden verzonden naar klanten. Voor tegel- of mozaïekmonsters op volledige grootte wordt het monstertarief gerekend. Vraag uw tegelspecialist naar de details.

VARIATIES IN AFMETINGEN EN GROOTTES

In deze brochure worden nominale afmetingen en diktes vermeld. Alle afmetingen zijn onderworpen aan een toelaatbare afwijking van ± 2 mm. Sommige mozaïektegels worden met de hand afgewerkt. De werkelijke afmetingen van de individuele mozaïekmatjes kunnen afwijken van de vermelde maten, die slechts als leidraad moeten worden gezien. Als u tegels met verschillende dieptes combineert, is het belangrijk dat u de diepste tegel vindt, aangezien deze de hoogte van uw vloer bepaalt. Houd rekening met speling van vijf procent voor snijden en afval bij het berekenen van het aantal benodigde tegels en mozaïekmatjes.

We worden zo nu en dan geconfronteerd met formaten/groottes/diktes die gewijzigd zijn ten opzichte van die zijn gepubliceerd in deze brochure. We kunnen niet garanderen dat dit niet gebeurt. Controleer altijd bij de klantenservice of de door u gekozen producten beschikbaar zijn voordat u een bestelling plaatst.

We raden aan dat u tien procent meer bestelt. Op deze manier weet u zeker dat de tegels niet opraken tijdens de installatie en vermijdt u het risico dat u meer tegels uit een andere batch moet bestellen. Het is onvermijdelijk dat u tegels moet snijden tijdens de installatie. Eventuele fouten of breuken kunnen worden gecompenseerd als u meer tegels hebt besteld.

VARIATIES IN NUANCERING EN KLEUR

Steen is een natuurlijk materiaal met inherente variaties in kleur, polijsting, patronen en oppervlaktetextuur. Er kan sprake zijn van enige kleurvariatie tussen de tegels onderling. Dit wordt in esthetisch opzicht vaak beschouwd als een positief kenmerk. Het betekent ook dat u er niet van uit kunt gaan dat een enkele monstertegel een nauwkeurige indicatie is van de kleur van het oppervlak als geheel.

De kenmerkende variaties in tint van elke tegel en van de tegels onderling dragen bij aan het unieke karakter van de installatie. De verschillen tussen verschillende partijen kunnen zelfs nog groter zijn. Daarom raden we aan dat u alle tegels tegelijkertijd aanschaft. U of uw tegelzetter zou wat tijd moeten nemen voor het los neerleggen van alle tegels om de beste verdeling van de nuancering te realiseren voordat de tegels worden gezet. Het is belangrijk dat de zetter begrijpt welke patronen of meningeffecten u wilt, wat de vereisten zijn voor het prepareren van het oppervlak en hoe de pasgelegde tegels worden beschermd tegen de lopende werkzaamheden.

Tijdens het snijproces op de steengroef wordt water gebruikt. Daarom kunnen producten van travertijn, kalksteen en marmer nog vochtig zijn als u uw levering ontvangt. Droge tegels kunnen lichter van kleur zijn dan vochtige. Laat daarom de tegels volledig opdrogen voordat u de tegels verdeelt op uw vloer. Zodoende hebt u een gelijkmatige verdeling van tinten en kleuren voordat u ze zet.

NATUURLIJKE IMPERFECTIES

Vanwege de natuurlijke oorsprong van enkele tegels kunnen ze kleine beschadigingen of onvolkomenheden vertonen. Zulke relatief kleine imperfecties zijn normaal en zijn niet het gevolg van gebrek aan vakmanschap. Deze eigenschap is bij sommige materialen en afwerkingen duidelijker aanwezig dan bij andere. Houd hiermee rekening bij het kiezen van uw tegels. Poreuze en onopgevulde tegels zijn duidelijk minder geschikt dan gepolijste tegels voor oppervlakken die perfect schoon moeten worden gehouden. Verpakking en verzending kunnen soms kleine beschadigingen veroorzaken, zoals afbrokkeling. Dit is normaal. We raden aan dat u afgebrokkelde tegels of tegels met ongewenste verkleuringen gebruikt voor het snijden tijdens het installatieproces. Natuursteen kan ook onderhevig zijn aan schuren en krassen.

LIJMEN, VOEGMIDDELEN, AFDICHTINGSMIDDELEN

Lees de installatiegids op www.originalstyle.com/guides voor meer informatie over lijmen, voegmiddelen en afdichtingsmiddelen voordat u begint met het zetten.

ONDERHOUD EN REINIGING

Veeg de vloer regelmatig of gebruik een stofzuiger om vuil te verwijderen. Als u iets morst, veeg dit dan onmiddellijk op met een schone, vochtige doek. Hardnekkige vlekken kunnen vaak worden verwijderd met een klein beetje terpentijn. We wijzen u erop dat het gebruik van bepaalde schoonmaakmiddelen op zuurbasis ertoe kan leiden dat de stenen tegels hiermee reageren en van uiterlijk veranderen.

FOTOGRAFIE

Als gevolg van variaties in studiobelichting en printinkten kunnen de in deze brochure afgebeelde kleuren enigszins afwijken van die van de daadwerkelijke tegels. We raden altijd aan dat u uw Original Style-leverancier vraagt om enkele voorbeelden.

AANSPRAKELIJKHEIDSBEPERKING

Original Style is niet aansprakelijk voor de verkeerde installatie van zijn producten. In geval van claims met betrekking tot de tegels zelf is de aansprakelijkheid van Original Style, voor zover dit wettelijk is toegestaan, beperkt tot het vervangen van het product of het vergoeden van de kosten van het product en is gevolgschade niet inbegrepen. Claims moeten binnen zeven werkdagen na ontvangst van de tegels worden ingediend. De tegels moeten worden geïnspecteerd voordat deze worden gezet. Claims worden niet behandeld nadat de tegels zijn gezet. We wijzen u erop dat tot de zetting het aanvaarden van de hoeveelheid, kleur, structuur, afmetingen en schakering van de tegels behoort. Original Style garandeert dat zijn tegels overeenkomen met hun omschrijving en geschikt zijn voor het beoogde gebruik. Original Style maakt geen andere uitdrukkelijke of impliciete garanties met betrekking tot de geschiktheid van de producten voor bepaalde installaties. We geven geen garanties, uitdrukkelijk of impliciet, ten aanzien van slijtagebestendigheid of onderhoudsmaatregelen.

Het is van groot belang dat de instructies van de producent voor voeg- en lijmstoffen worden opgevolgd ten aanzien van hun geschiktheid in combinatie met onze producten. Raadpleeg de leverancier van de voeg- en lijmstoffen van wie u de producten hebt gekocht in geval van twijfel. Original Style maakt geen beweringen over de geschiktheid voor gebruik van de lijmen en voegmiddelen van derde partijen. We wijzen u erop dat het gebruik van bepaalde bijtende reinigingsmiddelen kan leiden tot een reactie van de tegels, waarvan het uiterlijk kan veranderen.

Направляющий выступ использования

страница	Описание	Особые отметки	General Information
4-15	Травертин	Иногда на поверхности травертиновой плитки после установки появляются пустоты или небольшие отверстия. Мы не можем гарантировать, что подобное не произойдет. Любые появляющиеся пустоты можно заполнять затиркой или эпоксидной смолой. Обязательно учитывайте эту особенность при выборе травертина.	<p>Пожалуйста, проверьте пригодность всей продукции для конкретного использования, в соответствии с информацией, указанной на индивидуальной странице продукта в брошюре. Обратитесь к руководству по укладке, находящемуся по адресу www.originalstyle.com/guides, чтобы ознакомиться с более подробной информацией, прежде чем начинать укладку. Компания Original Style не несет ответственности за любые дефекты после укладки плитки и мозаики, а также за любые проблемы, указанные в этом разделе «Важная информация» или в руководстве по укладке, после укладки продукции.</p> <p>Плитку и мозаику Earthworks не рекомендуется укладывать снаружи по причине определенной степени пористости естественного камня. При укладке снаружи камень может абсорбировать воду, а соответственно плитка будет восприимчивой к заморозкам.</p> <p>Камень - это натуральный материал, а следовательно, ему свойственна неоднородность расцветки, наличие углублений, пятен, сколов, варьирование размеров и иногда окрашивание. Натуральный камень может тускнеть под воздействием ультрафиолетовых лучей. Мы не можем гарантировать, что подобное не произойдет.</p> <p>Клей: При установке продукции, содержащей светлый пористый камень, такой как известняк или травертин, рекомендуется использовать белый быстро застывающий клей типа C2. Это сократит вероятность появления на поверхности плитки пятен от воды из-за клея в процессе застывания. На сайте www.originalstyle.com/guides вы найдете более подробные инструкции по выбору клея и затирки.</p> <p>Герметизация, уход и очистка: плитку из природного камня и мозаику необходимо загерметизировать перед использованием. На сайте www.originalstyle.com/guides вы найдете более подробные инструкции по герметизации, уходу и очистке.</p>
16-38	Известняк	При установке любой каменной плитки на любой деревянный субстрат очень важно проявлять осторожность. В особенности это относится к известняковой плитке. Поверхность должна быть крепкой, твердой и абсолютно неподвижной. В противном случае известняковая плитка может повредиться или растрескаться. Модель Greyfriars Abbey подвержена царапинам, что является неотъемлемой особенностью этого камня. Появляющиеся царапины со временем будут выглядеть гармонично. Плитка Alexandrian Desert/Cream/Sun/Sand из известняка может содержать участки с окисью железа. Если такие участки плитки находятся в длительном контакте с водой, железо может вступить в реакцию и расшириться, что приведет к расслаиванию поверхности. При первом покрытии герметиком камень должен быть совершенно сухим. Необходимо также наносить необходимое количество герметика в соответствии со всеми инструкциями производителя.	
46-57	Мрамор	Наличие некоторого количества прожилок является естественной особенностью этого природного камня. Поскольку каждый кусок мрамора индивидуально вырезается в соответствии с форматом (окантовка, плоская плитка, плитка с фаской, мозаика), у такой продукции будет различаться оттенок, тон и количество и характер прожилок. Это может быть более заметно при установке плоской плитки рядом с продукцией меньших размеров, например, плитки с эффектом кирпичной кладки или плитки с фаской. Такая плитка может не полностью совпадать по оттенку и рисунку, однако общее впечатление будет потрясающим.	
62-63	Базальт	Поверхность базальта имеет крошечные отверстия и пустоты, что является неотъемлемой особенностью этого камня. С этим продуктом необходимо использовать черную затирку. Перед установкой нанесите на поверхность плитки затирку и протрите поверхность плитки. Таким образом вы предотвратите случайное попадание клея в пустоты, которое приводит к появлению серых пятен. Затем используйте черную затирку обычным образом.	
64-69	Натуральный сланец	Иногда сланец расслаивается (отслаивается) по причине природных особенностей этого камня. Если это случится во время укладки, удалите все отслаивающиеся куски. Если это случится позднее, очистите проблемную зону, затем заново загерметизируйте плитку.	
70-71	Терракота	Терракотовая плитка отличается высокой пористостью, поэтому ее нужно покрыть герметиком. На сайте www.originalstyle.com/guides приведены более подробные инструкции по покрытию герметиком такой плитки и уходу за ней.	
72-73	Раковины	Хотя эти раковины повторно обрабатываются резиновым герметиком, мы рекомендуем еще раз обработать раковину перед установкой. Обработку герметиком необходимо осуществлять таким же образом, как и на травертиновой напольной плитке.	
90-91	Плитка из гальки	Чтобы линии затирки не были заметны, некоторые камешки необходимо слегка пододвинуть, чтобы они заходили на соседние листы.	
97	Бордюры смешанного формата	Некоторые бордюры содержат металл. Будьте особенно внимательны при использовании металлической мозаики в электрическом душе. Обязательно проконсультируйтесь с профессиональным электриком перед укладкой.	

Ключ к символам

	Долговечность		Внутри		Внутренние стены		Души, стены душевых
	Варьирование расцветки		Пол		Камины и печи		Особые отметки

<p>ДОЛГОВЕЧНОСТЬ</p> <p>1. Высокий поток людей: очень прочная, подходит для большинства коммерческих помещений.</p> <p>2. Средний поток людей: подходит для коммерческих помещений с небольшим потоком людей и жилых помещений.</p> <p>3. Малый поток людей: подходит только для жилых помещений.</p> <p>4. Очень малый поток людей: подходит для жилых помещений, в которых осуществляется малое количество перемещений, например, для пола в ванной.</p> <p>ВАРЬИРОВАНИЕ РАСЦВЕТКИ</p> <p>A. Незначительное: относительно равномерная расцветка, возможны небольшие вариации.</p> <p>B. Среднее: цвет фона обычно немного варьируется.</p> <p>C. Значительное: неравномерная расцветка и/или имеются прожилки.</p> <p>Настоятельно рекомендуется учитывать распределение цвета при укладке.</p>	<p>КАМИНЫ И ПЕЧИ</p> <p>Обратите внимание, что на светлом камне могут оставаться пятна от черного пигмента угля и угольной пыли. Перед укладкой плитку необходимо обработать герметиком.</p> <p>ОСОБЫЕ ОТМЕТКИ</p> <ul style="list-style-type: none">● Рекомендуется использование белого клея.◆ Требуется обработка герметиком.▲ Полировка: полированный камень при намокании более скользкий, чем неполированный.► По причине особенностей этого продукта возможно расслоение.■ Рекомендуется использование черной затирки. <p>МОЗАИКА И БОРДЮРЫ, СОДЕРЖАЩИЕ МЕТАЛЛ</p> <p>Важно, чтобы всеми электрическими работами рядом с металлической мозаикой и бордюрами, содержащими металл, занимался профессиональный электрик. Будьте особенно внимательны при использовании</p>	<p>металлической мозаики в электрическом душе. Обязательно проконсультируйтесь с профессиональным электриком перед укладкой.</p> <p>Любая плитка из натурального камня подвержена появлению задиров и царапин.</p> <p>Увеличить яркость цветов можно при помощи специальной пропитки.</p> <p>Обратите внимание: плитка и мозаика из натурального камня содержат определенное количество железа, которое может вызвать обесцвечивание камня. Поскольку эта продукция изготовлена из природных материалов, компания Original Style не гарантирует, что этого не произойдет.</p> <p>Эти рекомендации компании Original Style, и они могут быть неполными.</p>
---	---	--

Важная Информация

Внимательно прочтите следующую информацию. Она поможет вам правильно выбрать плитку и мозаику Earthworks. Более подробные инструкции и информацию для подготовки к установке вы найдете в Руководстве по укладке по адресу www.originalstyle.com/guides. Мы настоятельно рекомендуем вам и вашему мастеру по укладке прочесть это Руководство по установке перед укладкой, поскольку компания Original Style не несет ответственности за любые дефекты после укладки плитки и мозаики, а также за проблемы, описанные в разделе «Важная информация» или в Руководстве по укладке после установки продукции.

ВЫБОР ПОДХОДЯЩЕЙ ПЛИТКИ И МОЗАИКИ

Перед заказом и установкой убедитесь в пригодности выбранной вами плитки/мозаики, ознакомившись с информацией на индивидуальных страницах соответствующих продуктов. Вам и вашему мастеру по укладке необходимо прочесть эту брошюру и Руководство по укладке (www.originalstyle.com/guides), чтобы убедиться в том, что камень подходит для установки в выбранном вами месте. Если вы не уверены, обратитесь к вашему дилеру Original Style для получения дальнейшей информации.

ПРЕДОСТАВЛЕНИЕ ОБРАЗЦОВ

Поскольку камень - это природный материал, ему присуща неоднородность расцветки. Не следует выбирать материал для стен или пола, основываясь на одном образце, поскольку он не может дать точного представления о том, как будет выглядеть конечный результат. По запросу мы высылаем клиентам образцы каменной плитки и мозаики. За полноразмерные образцы плитки и листов мозаики взимается плата как за образцы. Более подробную информацию вы найдете у своего дилера.

ВАРИИРОВАНИЕ ПО РАЗМЕРУ

В брошюре указаны номинальные размеры и толщина продукции. Все размеры указаны с погрешностью ± 2 мм. Поскольку некоторые виды мозаики обрабатываются вручную, реальные размеры каждого листа мозаики могут отличаться от этих цифр. В связи с этим приведенные данные необходимо рассматривать только в качестве примерного руководства. Если вы планируете сочетать плитку различной глубины, важно найти самую глубокую плитку, поскольку это поможет определить высоту пола. При расчете необходимого количества плитки и листов мозаики учитывайте допуск 5% на обрезки и отходы.

Иногда встречаются изменения в формате/размере/толщине, в связи с чем эти показатели могут отличаться от указанных в брошюре. Мы не можем дать гарантий того, что этого не произойдет. Прежде чем размещать заказ, всегда проверяйте наличие выбранного вами продукта в Отделе обслуживания заказчиков.

Мы рекомендуем сделать дополнительный допуск 10% при размещении заказа, чтобы ваши запасы не закончились во время укладки и вам не пришлось заказывать дополнительную плитку из другой партии. Вам в любом случае придется резать плитку во время ее укладки, поэтому если вы закажете дополнительное количество продукции, это компенсирует любые ошибки и сломанную плитку.

ВАРИИРОВАНИЕ ПО ТОНУ И ТЕКСТУРЕ

Камень - это природный материал, которому свойственно варьирование по цвету, наличие крапинок и отметин, а также неравномерность текстуры поверхности. Каждая плитка может отличаться от остальных по цвету. Обычно это считается преимуществом с эстетической точки зрения. Это также означает, что нельзя составлять представление о расцветке поверхности целиком по одному образцу плитки.

Заметные вариации расцветки каждой плитки и отдельных плиток улучшают внешний вид результата. Различия между плиткой из разных партий могут быть еще заметнее. Таким образом мы рекомендуем покупать всю необходимую плитку за один раз. Вам и вашему мастеру по укладке потребуется уделить время тому, чтобы разложить всю плитку и добиться наилучшего распределения ее расцветки перед укладкой. Важно, чтобы мастер по укладке понимал, какой узор или эффект вы хотите получить в результате, а также знал требования по подготовке поверхности и защите свежее уложенной плитки от текущих ремонтных работ.

В процессе резки в карьере используется вода, поэтому существует возможность того, что продукция из травертина, известняка или мрамора будет влажной при доставке. Сухая плитка может иметь более светлую расцветку по сравнению с влажной. В связи с этим важно полностью высушить плитку прежде чем планировать ее расположение на полу, чтобы у вас получилось равномерное распределение тона и цвета перед ее укладкой.

ПРИРОДНЫЕ ДЕФЕКТЫ

Некоторая наша плитка может иметь небольшие сколы или пятна по причине использования природных материалов. Такие относительно незначительные дефекты считаются нормальным явлением, а не результатом некачественного изготовления. В некоторых материалах и при некоторых вариантах обработки поверхности такие дефекты заметны в большей степени. Необходимо учитывать это при выборе плитки. По сравнению с отполированной плиткой пористая и незаполненная плитка менее пригодна для поверхностей, которые необходимо поддерживать в безупречной чистоте. Небольшие повреждения, такие как сколы, иногда могут появляться в результате упаковки и транспортировки. Это нормальное явление и мы рекомендуем использовать плитку со сколами или нежелательными пятнами, если таковая имеется, для резки во время укладки. Природный камень также подвержен появлению царапин.

КЛЕЙ, ЗАТИРКА, ГЕРМЕТИК

Для получения информации о клее, затирке и герметике до установки прочтите Руководство по укладке, доступное по адресу www.originalstyle.com/guides.

УХОД И ОЧИСТКА

Регулярно подметайте или пылесосьте плитку для устранения мусора. В случае проливания жидкостей немедленно вытрите их чистой влажной тряпкой. Устойчивые пятна часто можно удалить при помощи небольшого количества растворителя. Обратите внимание, что использование определенных моющих средств на кислотной основе может привести к химической реакции и изменению внешнего вида камня.

Обратите внимание, что галька, использованная в мозаике и бордюрах Green Balihi, более плоская, чем представленная на данной странице.

There are three kinds of rock types:

Igneous – solidified magma or lava formed after volcanic activity. Extremely hard. Examples: granite, basalt.

Sedimentary – weathering of existing rocks produced sediment which settled in layers and gradually ‘lithified’ (turned to stone) by compaction and cementation. Examples: limestone, travertine.

Metamorphic – Metamorphism is the transformation of one rock type into another, brought about by heat, pressure or chemically active fluids. Examples: Marble (originally limestone or dolostone), slate (previously sedimentary shale or mudstone)

Textures, finishes and formats:

Brushed – the stone's surface is brushed with rotary diamond pads, resulting in a textured finish to the surface and rounded edges.

Cushioned, pillowed – where the straight edges of a tile have been rounded and softened.

Filled – where voids, pits and holes (a natural characteristic of some stone) have been filled with a resin to create a smooth surface.

Honed – a machine process which results in a smooth, matt surface.

Lightly polished – the surface is polished to a softly reflective sheen rather than a high gloss.

Polished – where the surface is buffed by machine, resulting in an even, smooth and highly reflective surface.

Tumbled – the surfaces of the stone have been textured, worn and weathered by contact with abrasive materials.

Unfilled – where the pits and voids within travertine tiles have not been filled. These can be grout-filled during installation.

Bevel format – the tile has been cut to create angled edges that slope away from the flat top surface.

Il existe trois types de roches différents:

Roches ignées – roches formées par refroidissement et solidification du magma. Elles sont généralement extrêmement dures. Le granit et le basalte sont des roches ignées.

Roches sédimentaires – L'érosion de roches produit des sédiments qui se déposent en couches et sont progressivement lithifiés (transformés en pierre) par compaction et cimentation. Le calcaire est une roche sédimentaire.

Roches métamorphiques – le métamorphisme est la transformation d'une roche en un autre type de roche. Ce phénomène peut être induit par la chaleur, la pression, ou des liquides chimiquement actifs. Les marbres, par exemple, proviennent de calcaires issus de calcaire ou de dolostone, tandis que les ardoises proviennent de l'argile schisteuse ou de l'argilite, qui sont toutes les deux des roches sédimentaires. Elles bénéficient aujourd'hui d'une nouvelle vie sous la forme de roches métamorphiques.

Glossaire des textures et finitions

Brossé – la surface de la pierre est brossée avec des disques diamantés rotatifs, qui permettent d'obtenir une finition graineuse sur la surface et des rebords arrondis.

Bords abattus, à – carreaux dont les rebords droits ont été arrondis et adoucis.

Apprêté – carreau dont les creux, pores et piqûres qui font naturellement partie de la pierre ont été rebouchés à l'aide d'une résine pour obtenir une surface lisse. La surface est ensuite sablée.

Sablage – processus réalisé à l'aide d'une machine qui permet d'obtenir une surface lisse et matte.

Légèrement poli – la surface est polie (voir ci-dessous), mais jusqu'à l'obtention d'un lustre doux plutôt que d'une brillance hautement réfléchissante.

Poli - se dit des carreaux dont la surface est lustrée à la machine, afin d'obtenir une surface lisse et hautement réfléchissante.

Poli au tonneau - carreaux en pierre dont les surfaces ont été texturées, usées et vieillies au contact de matériaux abrasifs.

Non apprêté – carreau en travertin dont les pores et piqûres n'ont pas été rebouchés. Ceux-ci peuvent être partiellement rebouchés par le ciment joint lors de la pose.

Format biseauté – ces carreaux sont découpés de manière à créer des arêtes inclinées par rapport à leur surface lisse.

Es gibt drei Gesteinsarten:

Magmatisches Gestein - Es bildet sich, wenn Magma abkühlt und erstarrt. Üblicherweise ist dieses Gestein äußerst hart. Granite und Basalt sind magmatisches Gestein.

Sedimentgestein - Verwitterung von bestehendem Gestein führt zu Ablagerungen, die sich in Schichten absetzen und sich nach und nach durch Verdichtung und Zementation, erhärten' (zu Stein werden). Kalkstein ist ein Sedimentgestein.

Metamorphes Gestein - Metamorphose ist die Umwandlung von einer Gesteinsart in eine andere. Dies kann durch Hitze, Druck oder chemisch aktive Flüssigkeiten. Marmor war zum Beispiel Kalkstein, der aus Kalkstein oder Dolomit entstanden ist, während Schieferplatten aus Schiefererton oder Schlamstein entstanden ist, die beide Sedimentgesteine sind. Heute führen sie ein neues Leben als metamorphes Gestein.

Glossar der strukturen und ausführungen

Gebürstet – die Oberfläche des Steins wird mit rotierenden Diamantpads gebürstet, wodurch die Oberfläche und die abgerundeten Kanten ein strukturiertes Aussehen erhalten.

Gedämpft, gepolstert - wenn die geraden Kanten einer Fliese abgerundet und weicher gemacht werden.

Gefüllt - wenn Hohlräume, Vertiefungen und Löcher, die eine natürliche Eigenschaft des Steins sind, mit einem Harz gefüllt wurden, um eine glatte Oberfläche zu erhalten. Anschließend wird die Oberfläche geschliffen.

Geschliffen - ein maschineller Prozess, um eine glatte, matte Oberfläche zu erhalten.

Leicht poliert - die Oberfläche wird poliert (siehe unten), jedoch nur bis zu einem weichen, reflektierenden Schimmer und nicht auf Hochglanz.

Poliert - wenn die Oberfläche maschinell poliert wird, um eine ebene, glatte und stark reflektierende Oberfläche zu erhalten.

Getrommelt - der Oberfläche des Steins wurde durch Kontakt mit Schleifmitteln ein strukturiertes, benutztes und älteres Aussehen verliehen Nicht gefüllt - wenn die Vertiefungen und Hohlräume innerhalb der Travertin-Fliesen nicht gefüllt wurden. Sie können während der Installation teilweise mit Fugenmasse gefüllt werden.

Facettenformat – die Fliese wurde angeschrägt, so dass die Kanten schräg nach unten verlaufen.

Er zijn drie soorten gesteente:

Stollingsgesteente – Dit gesteente wordt gevormd als magma afkoelt en hard wordt. Dit gesteente is gewoonlijk zeer hard. Graniet en basalt zijn stollingsgesteente.

Sedimentair gesteente – Ververing van bestaand gesteente produceert sediment. Dit bezinkt in lagen en versteent met het verloop van tijd door samendrukking en cementatie. Kalksteen is een sedimentair gesteente.

Metamorf gesteente – Metamorfose is de transformatie van een bepaald type steen in een ander. Dit kan worden veroorzaakt door hitte, druk of chemisch actieve vloeistoffen. Kiezels waren bijvoorbeeld kalkstenen ontstaan uit kalksteen of dolomiet, terwijl leisteen eerder schalie of kleisteen was, beide sedimentair gesteente. Maar nu gaan beide als metamorf gesteente door het leven.

Woordenlijst met texturen en afwerkingen

Geborsteld – Het oppervlak van het steen wordt geborsteld met draaiende diamanten schijven, hetgeen leidt tot een getextureerde afwerking van het oppervlak en afgeronde hoeken.

Afgerond – Hierbij worden de rechte hoeken van een tegel afgerond en zijn scherpe randen verwijderd.

Opgevuld – Hierbij worden openingen, putten en gaten, natuurlijke kenmerken van het steen, opgevuld met hars om een glad oppervlak te verkrijgen. Vervolgens wordt het oppervlak gehoord.

Gehoord – Een machinaal proces dat resulteert in een glad, mat oppervlak.

Licht gepolijst – Het oppervlak wordt gepolijst (zie hieronder), maar het eindresultaat is een lichte, reflecterende glans in plaats van een totaalglans.

Gepolijst – Hierbij wordt het oppervlak met een machine opgepoetst, hetgeen resulteert in een effen, glad en zeer reflecterend oppervlak.

Trommelpolijsten – De oppervlakken van het steen zijn getextureerd, afgeslepen en afgesleten door contact met schurende materialen.

Onopgevuld – Hierbij worden de putten en openingen in travertijntegels niet opgevuld. Ze kunnen deels worden opgevuld met voegmiddel tijdens de installatie.

Afgeschuinde varianten: de randen van de tegels zijn in een hoek gesneden die weggericht is van de platte bovenkant.

Существует три типа пород:

Вулканическая - это затвердевшая магма или лава, образовавшаяся в результате вулканической активности. Очень твердая. Примеры: гранит, базальт.

Осадочная - воздействие погодных условий на существующие породы привело к образованию слоя осадков, которые постепенно «литифицировались» (превратились в камень) в результате уплотнения и цементации. Примеры: известняк, травертин.

Метаморфическая - Метаморфизм - это превращение породы одного типа в породу другого типа в результате воздействия тепла, давления или химически активных жидкостей. Примеры: Мрамор (изначально известняк или доломитит), сланец (изначально осадочная глина или аргиллит).

Текстуры, покрытия и форматы:

Зачищенная - поверхность камня обрабатывается крутящейся алмазной насадкой, в результате чего получается текстурированная поверхность с закругленными краями.

Смячённая - прямые края плитки закруглены и смячены.

Заполненная - пустоты, углубления и отверстия (естественная особенность некоторых видов камня) были заполнены смолой для создания гладкой поверхности.

Отшлифованная - машинная обработка, в результате которой получается гладкая матовая поверхность.

Слегка отполированная - поверхность полируется до получения мягкого, но не глянцевого блеска.

Отполированная - поверхность полируется машиной, в результате чего получается ровная, гладкая и очень хорошо отражающая свет поверхность.

Шероховатая - камень с текстурированной, потертой, выветренной поверхностью в результате контакта с абразивными материалами.

Незаполненная - травертиновая плитка с незаполненными углублениями и пустотами. Их можно заполнить затиркой во время укладки.

С фаской - на краях плитки образованы наклонные грани, начинающиеся от ровной верхней грани.



Ardennes

Important Information

How many tiles will you need?

De combien de carreaux aurez-vous besoin?

Wie viele Fliesen brauchen Sie?

Hoeveel mozaïektegels hebt u nodig?

Сколько понадобится плиток?

Trims and Borders

Bandes de chant et Bordures

Leisten und Borten

Afwerking en Randen

Бордюры

Nominal tile size cm Taille nominale du carreau cm Genormte Fliesengröße cm Nominaal tegelformaat cm Стандартный размер плитки см	Tiles per square metre Carreaux par metre carré Fliesen pro Quadratmeter Tegels per vierkante meter Плиток на м
10 x 10	100
14.7 x 7.2	94.5
15 x 7.5	88.9
16 x 27*	43
20 x 10	50
20 x 20	25
20.3 x 20.3	24.3
22 x 36	12.6
27 x 27	13.7
23 x 7.5	58
30 x 10	33
30 x 15	22.2
30 x 20	16.7
30 x 30	11.1
30 x 31.2	10.7
30.5 x 10	32.8
30.5 x 12	27.3
30.5 x 15	21.9
30.5 x 26.1	12.6
30.5 x 30	10.9
30.5 x 30.5	10.7
31 x 31	10.4
40 x 20	12.5
40.6 x 20	12.3
40.6 x 20.3	12.1
40 x 40	6.2
40.6 x 40.6	6.1
45 x 45	4.9
55 x 27.35	6.6
60 x 30	5.5
61 x 30.5	5.4
60 x 40	4.1
60 x 40.6	4.1
60.5 x 40	4.1
61 x 30.5	5.4
61 x 40.6	4.1
60 x 60	2.8
61 x 61	2.7
80 x 40	3.1
90 x 30	3.7
90 x 60	1.8
91.5 x 61	1.8

Length cm Longueur en cm Länge in cm Lengte cm Ленгтх см	Per linear metre Mètre linéaire Fliesen pro Meter Tegels per lieaire meter на погонный метр
10	10
26.5	3.7
27	3.7
28	3.6
28.5	3.5
29	3.4
29.5	3.4
30	3.3
30.5	3.3
31	3.2
33	3.1
34	3

1 set = 0.72 m²
1 set = 2.718 m²
1 set = 3.348 m²

* Refers to Venetian Fan Honey, page 88
Fait référence au Venetian Fan Honey, page 88
Bezieht sich auf Venetian Fan Honey, Seite 88
Geldt voor Venetian Fan Honey, pagina 88
Относится к Venetian Fan Honey, стр. 88

All above dimensions are subject to a tolerance of $\pm 2.5\text{mm}$ or $\frac{3}{32}"$
Toutes les dimensions ci-dessus sont sujettes à une tolérance de $\pm 2.5\text{mm}$ ou $\frac{3}{32}"$
Alle obigen Maße unterliegen einer Toleranz von $\pm 2.5\text{ mm}$ oder $\frac{3}{32}"$
Voor alle bovenstaande afmetingen geldt een mogelijke afwijking van $\pm 2.5\text{ mm}$
Допуск на все приведенные в данной брошюре размеры составляет $\pm 2,5\text{ мм}$

Quantities shown exclude grout gaps between each sheet. When calculating the number of tiles you will require, do not forget to make an allowance for cutting and wastage.


Les quantités indiquées excluent les écarts des joints entre chaque plaque. Lorsque vous calculez le nombre de carreaux dont vous avez besoin, n'oubliez pas de prendre en compte les découpes et les pertes.

Die angegebenen Mengen berücksichtigen nicht die Fugenspalten. Bei der Berechnung der erforderlichen Anzahl von Fliesen denken Sie bitte daran, zusätzliche Fliesen für Verschnitt und Reststücke einzuplanen.

Er wordt bij deze hoeveelheden geen rekening gehouden met voegen tussen de matten. Houd bij het berekenen van het aantal benodigde mozaïekmatten rekening met snijverlies en breuk.


Указанное количество не учитывает зазоры с затиркой между листами. При расчете требуемого количества листов не забудьте заложить определенное количество на обрезки и отходы.

Mosaics




The largest range of mosaics in Europe:
Glass, metals, stone, shell, wood, porcelain

Splashbacks



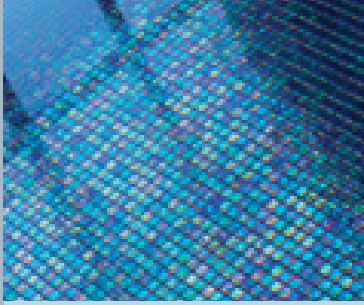
Glass splashbacks and upstands
in a choice of colours

Glassworks




A huge collection of glass tiles
including large formats

Pool and Spa



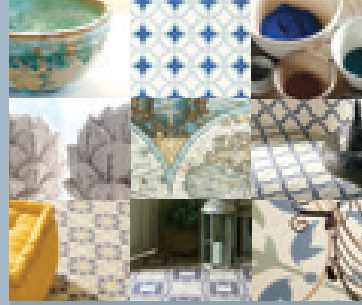
A collection of mosaics and tiles for
pools, pool side and spas

Tileworks




Contemporary porcelain and ceramic
tiles for floors and walls

Odyssey




Tiles inspired by journeys
of discovery

Designer Classics




Wall tiles, half tiles, large brick and
metro tiles in bright colours and patterns

Victorian Floor Tiles



Ever popular traditional
geometric tiles

Artworks



Traditional wall tiles to coordinate
with the Victorian Floor Tile range

Original Style also produce other ranges of ceramic tiles, natural stone, Mosaics and Victorian floor tiles.
Please ask your retailer for copies of these brochures. Please return this brochure to your Original Style stockist after use.

The 'Original Style' logo is a registered trade mark of Original Style Ltd.
Original Style Limited is registered in England number 3018117.
Registered Office: Falcon Road, Sowton Industrial Estate, Exeter, Devon EX2 7LF, England

Your Original Style stockist

£2.00 €3.00 \$3.50

EW-STBROCH3/01/14

GENERAL ENQUIRIES

Tel: +44 (0)1392 473004

Fax: +44 (0)1392 473014

UK SALES

Tel: +44 (0)1392 473000

Fax: +44 (0)1392 473010

EXPORT SALES

Tel: +44 1392 473001

Fax: +44 1392 473011

Email: info@originalstyle.com

Website: www.originalstyle.com

