

ARTWORKS



©
ORIGINALSTYLE



Front cover: 7800B Laudatory Wreath 2 Tile Set, 7802B Pearl Trellis, 7820B Diamond Swag Border, GCH9921 Sigma, GCH9928 Hogarth, GCH9002 Half Field tile, GCH9903 Skirting, all Charcoal Grey, GOLD9909 Gold Omega.

Floor: Original Style Earthworks Ardennes Honed Limestone, with Athenian Key Black Corner. **This page:** **Top left:** E9000 Field tile, E9900 Albert, E9908 Adelaide, all Victorian Green. **Top right:** sponging and fettling of greenware (this is clay before it is fired). **Middle left:** removing slip cast pieces from their moulds. **Middle:** checking Masterpiece tiles. **Above left:** screen printing a background design ready for hand painting. **Above right:** hand painting.

Opposite page: 7802B Pearl Trellis, 7807B Cartouche with Sovereign Crown, 7815B Twisted Trellis Border, GCH Albert, GCH Sigma, GCH Skirting, all Charcoal Grey.

Floor: Original Style Odyssey Empire pattern with Victorian Floor Tile Plymouth border



CONTENTS

Classical Style	04-07
Fabergé Collection	08-11
The Masterpiece Collection	12-21
The Victorian Collection	22-31
Art and Crafts	32-33
Art Nouveau	34-39
Relief Tiles	40-43
Mackintosh Style	44-45
Art Deco	46-47
Hand Decorated Tiles	48-49
Crackle Glaze and Metro Tiles	50-51
Mosaic Floor Tiles	52-53
Victorian Floor Tiles	54-57
Gold, Platinum and Bronze Tiles and Mouldings	58-59
Colours and Trims	60-67
Corners and Profiles	68-69
Tile Panels	70-71
Important Information	72-79

RECREATING *Classic Styles*

Inspiration for our unique Artworks tiles can be traced back to ancient Greece and Rome, for it was art and architecture from this era that was the basis for many of the Renaissance, Regency and Victorian imagery which forms much of this exclusive collection.

A WEALTH OF COLOUR AND DECORATIVE DETAIL

At Original Style we have devoted years of research to perfect ceramic decorating techniques which allow the consistent reproduction of vivid colours combined with precise detail. The results can be seen on the following pages, including classic works of art on ceramic tiles which faithfully reproduce the colours and textures of the original canvases.

A REFLECTION OF TRUE QUALITY

The exceptional reflectivity of our field tiles is achieved by creating our own glazes. These have a translucence, intensity and depth which we believe to be unmatched by any other tile manufacturer, anywhere in the world. Moreover, our mouldings are made, hand finished and fired in our kilns, and the tiles are still hand painted by skilled artisans in our Devon studio.

MIX AND MATCH

All standard tiles are 152mm wide (6") with an edge depth of 7mm ($\frac{1}{4}$ "). This brochure shows just a few ways in which decorated, moulded and plain tiles can be combined to create stunning effects but, with such a wide selection, we are confident that you will be able to think of many more!



▲ A9032TP Fleur de Lis Platinum on Brilliant White 2 tile set, PLAT9909 Platinum Omega, A9033TP Fleur de Lis Platinum on Brilliant White Border, A9000 Brilliant White field tile.

CLASSICAL *Style*

The Fleur de Lis has been used for thousands of years: it was the flower of Hera, Moon Goddess of the Ancient Greeks, a symbol of purity associated with the Virgin Mary, and the heraldic emblem of the Tudor dynasty and a multitude of French rulers going back to Charlemagne. It is still in use today for coats of arms for cities and monarchs.

We have carefully researched its shape and proportions to bring you our version of this beautiful motif on a tile. The Fleur de Lis now graces Original Style tiles in gold and platinum on backgrounds of Brilliant White, Black and Colonial White, giving an almost three dimensional effect. Use Fleur de Lis in your home and enjoy its delicate grandeur.

GOLD9909 Omega
152 x 12mm (6" x 1/2")

PLAT9909 Omega
152 x 12mm (6" x 1/2")



A9032TP Fleur de Lis Platinum on Brilliant White
2-tile set. Each tile 152 x 152mm (6" x 6")



A9033TP Fleur de Lis Platinum on Brilliant White Border
152 x 25mm (6" x 1")



B9032TP Fleur de Lis Platinum on Colonial White
2-tile set. Each tile 152 x 152mm (6" x 6")



B9033TP Fleur de Lis Platinum on Colonial White Border
152 x 25mm (6" x 1")



B9032TG Fleur de Lis Gold on Colonial White
2-tile set. Each tile 152 x 152mm (6" x 6")



B9033TG Fleur de Lis Gold on Colonial White Border
152 x 25mm (6" x 1")



N9032TG Fleur de Lis Gold on Black
2-tile set. Each tile 152 x 152mm (6" x 6")



N9033TG Fleur de Lis Gold on Black Border
152 x 25mm (6" x 1")





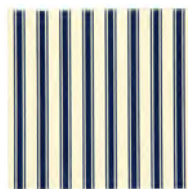


▲ F9036B Fleur de Lis Burgundy on Colonial White 2-tile set, F9928 Hogarth Burgundy, F9030B Burgundy Regency Stripe on Colonial White, F9903 Skirting Burgundy. Floor: Original Style Earthworks Lascaux Polished Limestone.
 ▼ G9036B Fleur de Lis Royal Blue on Colonial White 2-tile set, G9900 Albert Royal Blue, G9030B Royal Blue Regency Stripe on Colonial White, B9903 Skirting Colonial White.

CLASSICAL Style

Bring the refined elegance that was typical of Georgian and Regency interiors into your own rooms with these striped tiles, available in the strong rich colours of Burgundy and Royal Blue. If you pair the Stripe with a complementary Fleur de Lis you will have a perfect match, whether it's in the bathroom, hallway or bedroom, or anywhere you choose where you can appreciate their classic style.

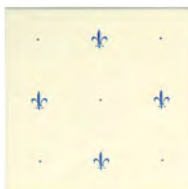
ROYAL BLUE



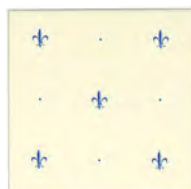
G9030B Royal Blue Regency Stripe on Colonial White
152 x 152mm (6" x 6")



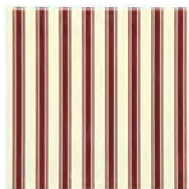
G9035B Fleur de Lis Royal Blue on Colonial White
Border 152 x 25mm (6" x 1")



G9036B Fleur de Lis Royal Blue on Colonial White
2-tile set. Each tile 152 x 152mm (6" x 6")



BURGUNDY



F9030B Burgundy Regency Stripe on Colonial White
152 x 152mm (6" x 6")



F9035B Fleur de Lis Burgundy on Colonial White
Border 152 x 25mm (6" x 1")



F9036B Fleur de Lis Burgundy on Colonial White
2-tile set. Each tile 152 x 152mm (6" x 6")







FABERGÉ

Collection

The legendary Fabergé Easter eggs were the creation of Carl Fabergé, goldsmith to the Imperial Crown of Russia until 1917. Fabergé and his company were commissioned to create sumptuous eggs and other intricate jewellery and gifts. Elements such as fleur de lis, wreaths and crowns were frequently used in his objects d’art.

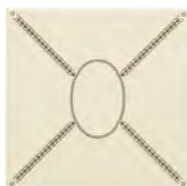
An inspired tile collection

Taking inspiration from his creations, we have produced the Fabergé Collection which echoes these classic elements. The designs, traced in high definition in Charcoal Grey on a highly reflective Colonial White background, are completed with exceptionally fine detail.

Trellis Field tiles



7802B Pearl Trellis
152 x 152mm (6" x 6")



7803B Cartouche
152 x 152mm (6" x 6")



7808B Cartouche with
Fabergé Fleur de Lis
152 x 152mm (6" x 6")



7807B Cartouche with
Sovereign Crown
152 x 152mm (6" x 6")



7805B Cartouche with Egg
152 x 152mm (6" x 6")

▲ 7802B Pearl Trellis, 7807B Cartouche with Sovereign Crown, 7815B Twisted Trellis Border, GCH9900 Albert, GCH9921 Sigma, GCH9903 Skirting, all Charcoal Grey. Floor: Original Style Odyssey Empire pattern with Victorian Floor Tile Plymouth border.

◀ 7800B Laudatory Wreath 2 Tile Set, 7802B Pearl Trellis, 7820B Diamond Swag Border, GCH9921 Sigma, GCH9928 Hogarth, GCH9002 Half Field tile, GCH9903 Skirting, all Charcoal Grey, GOLD9909 Gold Omega. Floor: Original Style Earthworks Ardennes Honed Limestone, with Athenian Key Black Corner.



FABERGÉ

Collection

Dot Field tiles



7814B Dot Field Tile
152 x 152mm (6" x 6")



7811B Dot Cartouche
with Egg
152 x 152mm (6" x 6")



7809B Dot Cartouche
with Fabergé Fleur de Lis
152 x 152mm (6" x 6")



7813B Dot Cartouche
with Sovereign Crown
152 x 152mm (6" x 6")

Co-ordinating tiles

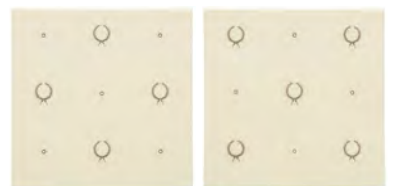
To complement this elegant collection we have introduced a co-ordinating set of tiles and mouldings in a new colour, Charcoal Grey. This rich, deep grey is perfect for harmonising with classic and modern sanitary ware in bathrooms and appliances in kitchens. Please turn to page 66 to see the complete range of mouldings.

All the tiles and mouldings are suitable for use on walls in kitchens and bathrooms, but could also be placed in dining rooms, hallways, conservatories – the choice is yours. The Fabergé Tile Collection will certainly add a distinct aura of grandeur wherever it is installed.

2 Tile Pattern Sets



7801B Fabergé Fleur de Lis 2-tile Set
152 x 152mm (6" x 6")



7800B Laudatory Wreath 2-tile Set
152 x 152mm (6" x 6")



▲ Above: 7800B Laudatory Wreath 2 Tile Set, GCH9928 Hogarth Charcoal Grey, GOLD9909 Omega Gold, 7820B Diamond Swag Border, SPINIT7820B Monogram Diamond Swag Border, GOLD9909 Omega Gold, GCH9921 Sigma, GCH9002 Half Tile both Charcoal Grey.
 ◀ Opposite: 9802B Pearl Trellis, GCH9921 Charcoal Grey Sigma, 7814B Dot Field Tile.

Tiles, Mouldings and Borders

The designs for the Collection have been drawn in meticulous detail and are reproduced in the highest definition possible onto our ceramic tiles.

Border Tiles



7828B Single Sovereign Crown
152 x 75mm (6" x 3")



7819B Egg & Trellis
152 x 75mm (6" x 3")



7823B Trellis Border
152 x 75mm (6" x 3")



7818B Beaded Border
152 x 50mm (6" x 2")



7816B Fabergé Fleur de Lis
Border
152 x 25mm (6" x 1")



7830B Single Laudatory Wreath
152 x 75mm (6" x 3")



7831B Double Laudatory Wreath
152 x 75mm (6" x 3")



7820B Diamond Swag
152 x 75mm (6" x 3")



7817B Crossed Arrows Border
152 x 50mm (6" x 2")



7815B Twisted Trellis Border
152 x 25mm (6" x 1")

Add your own individual touch

There is also an opportunity for you to personalise the collection by adding your own initials in a beautiful, matching script within a cartouche, swag or wreath to perfectly fit within a border or a field of tiles.



SPFABINIT Monogram
Cartouche
152 x 152mm (6" x 6")



SPFABINITB Monogram
Cartouche Border
152 x 75mm (6" x 3")



SPINIT7830B Monogram
Single Laudatory Wreath
Border
152 x 75mm (6" x 3")



SPINIT7820B Monogram
Diamond Swag Border
152 x 75mm (6" x 3")





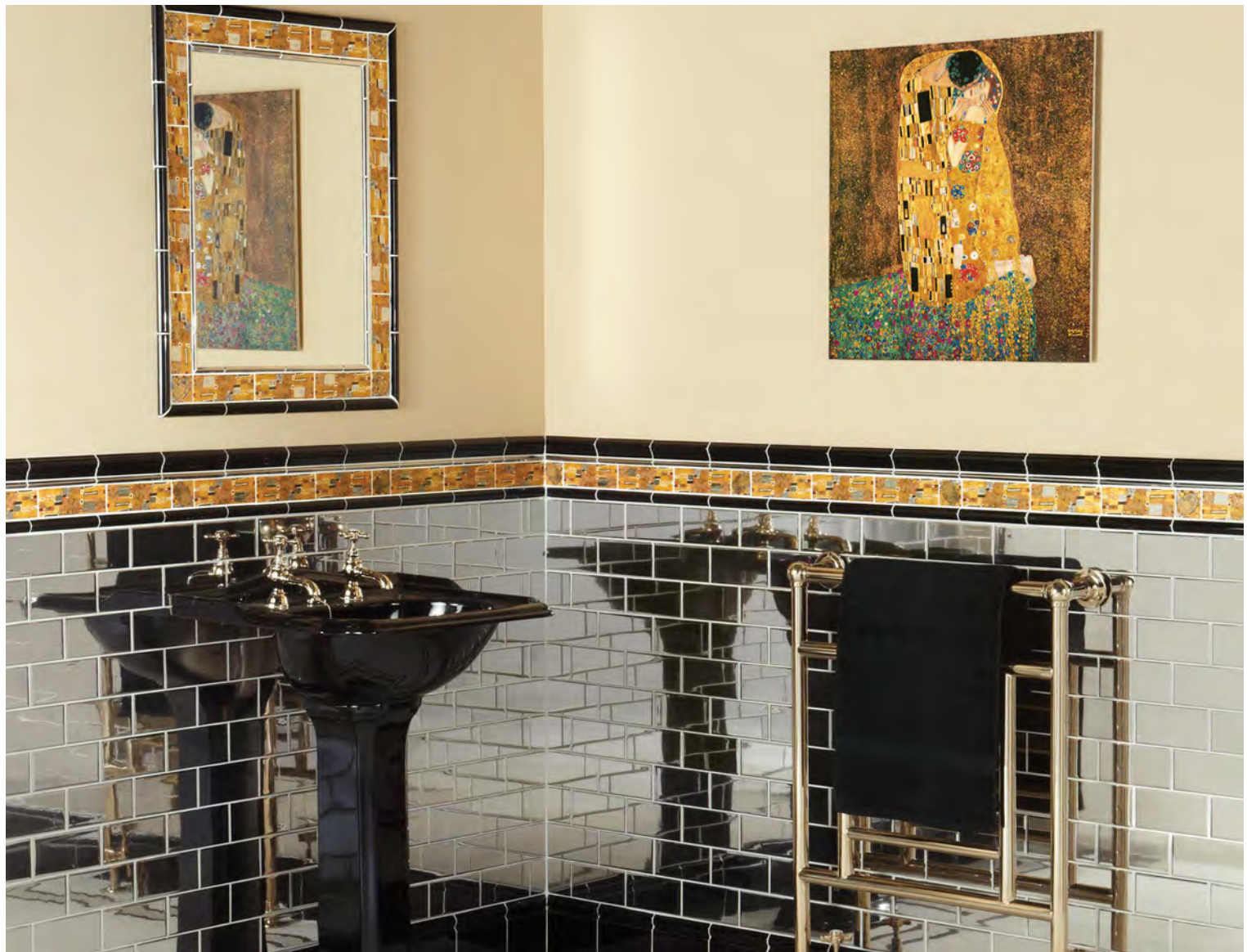


MASTERPIECE *Collection*

What could be more up-lifting to gaze at as you relax in your bath than a work of art by one of the great painters of the past?

These historic works of art are accurately replicated on our glazed ceramic tiles. As these tiles are larger and thicker than our normal tiles, we have developed two versions for different types of display. Each Masterpiece tile can be installed within a field of tiles, framed with matching frame sets. The other option is to hang them as ceramic plaques, and the tiles have wall fixing brackets for this purpose. It means you can install or hang your chosen Masterpiece in rooms such as bathrooms and conservatories where steam, strong sunlight or UV light could damage conventional prints or poster reproductions of these paintings.

◀ 6356 The Kiss, 6356P Vienna Frame Set, 6353P Vienna Corner Set, both Platinum, N900 Field tiles, Jet Black, with Kasba mosaics from the Mosaics Collection.
Floor: Fantasy Black Polished Porcelain from the Tileworks range.



▲ 6356WB The Kiss, N9901 Victoria, N9921 Sigma, both Jet Black, GOLD9909 Omega, 6355 Klimt Border, 6354 Klimt Corner, PLAT9002 Half field tile Platinum, N9903 Skirting Jet Black, mirror is framed by N9921 Sigma Jet Black, GOLD9909 Omega Gold with Klimt Borders and Corners. Please turn to page 58-59 for more details of the Gold and Platinum tiles.

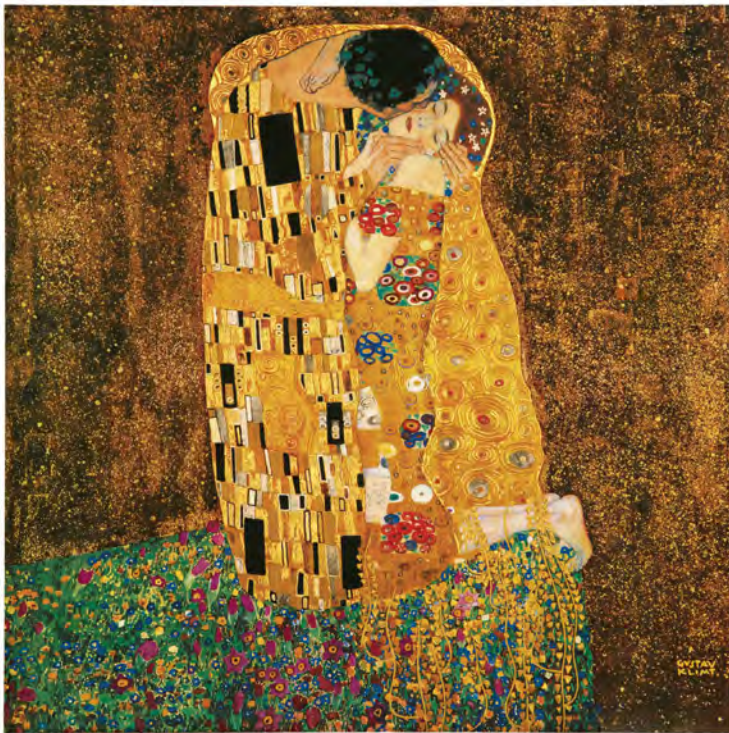
MASTERPIECE

Collection

GUSTAV KLIMT (1862-1918)

The son of a Bohemian gold engraver, Klimt showed early artistic promise and at the age of 14 entered the Viennese School of Arts and Crafts. The period known as the Belle Époque (the last years of the 19th century), was also a blossoming of the Art Nouveau movement, to which Klimt was a prominent contributor. He was a founding member of the anti-establishment Vienna Secession movement (similar to the Art Nouveau movement in Paris), which embraced not only art but architecture and design. Against this backdrop Klimt's work pushed boundaries to test public tolerance of images of female nudity and eroticism, a major theme of his art.

Klimt was inspired by art from the ancient Egyptian and Minoan civilizations and influenced by the stunning Byzantine mosaics in Venice and Ravenna. Since he painted The Kiss in 1907 it has become his most famous work – and arguably the world's most popular painting. The sumptuous and dazzling image contains a great deal of symbolism and imagery. The original work has a three dimensional effect, and to create an accurate facsimile, we have crafted the image onto a tile using pure gold, platinum and silver (just like the original), in addition to ceramic colours. We have also designed a coordinating border and corner.



THE KISS MASTERPIECE TILE

6356 - plain back to install in a field of tiles*
6356WB - with brackets to hang as a picture*

Picture tile only:
600 x 600 x 10mm (23 5/8" x 23 5/8" x 3/8")

With frame:
670 x 670 x 10mm (26 1/2" x 26 1/2" x 3/8")

*Please turn to pages 72-78 for more details

BORDERS AND CORNERS

Made to match 'the Kiss', the border and corner also contain pure gold and platinum. You can place the border within a dado or use as a frame. Different effects can be created when the border is inverted and the corners rotated.



6355 Klimt Border
152 x 51 x 7mm (6" x 2" x 5/16")

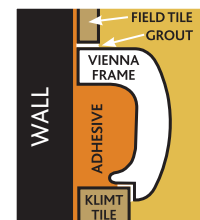


6354 Klimt Corner
51 x 51 x 7mm (2" x 2" x 5/16")

Images of The Kiss, Border and Corner above are shown in a larger scale to illustrate the fine details.

VIENNA FRAMES AND CORNERS

These have been specially designed to match Masterpiece tiles and bridge the differences in thickness between these and all field tiles ranging from 5-12mm (7/8" x 15/16") as shown in the diagram right.



8 Piece Vienna Frame Set
Each piece measures 293 x 35 x 19mm (11 9/16" x 1 3/8" x 3/8")



6356GOLD Gold



6353GOLD Gold



6356P Platinum



6353P Platinum



6356AG Antique Gold



6353AG Antique Gold



6356N Black



6353N Black



MASTERPIECE *Collection*



Alma-Tadema: At Aphrodite's Cradle (1908), private collection.

6358 - plain back to install in a field of tiles*
6358WB - with brackets to hang as a picture*



Alma-Tadema: A Coign of Vantage (1895), private collection.

6361 - plain back to install in a field of tiles*
6361WB - with brackets to hang as a picture*



Alma-Tadema: Silver Favourites (1903), Manchester City Art Gallery.

6360 - plain back to install in a field of tiles*
6360WB - with brackets to hang as a picture*



Alma-Tadema: The Baths of Caracalla (1899), private collection.

6359 - plain back to install in a field of tiles*
6359WB - with brackets to hang as a picture*

SIR LAURENCE ALMA-TADEMA (1836-1912)

Although he was Dutch by birth, Alma-Tadema spent most of his working life in England. He was particularly noted for his paintings of elegant female figures in classical Greek and Roman settings, and was described by Punch as a "marvellous artist" for his skill in depicting marble. The vivid blue of the Mediterranean is a recurring theme in his work and forms the backdrop for three of the four paintings we have selected.

Dimensions for all 4 Alma-Tadema tiles

Picture tile only:

560 x 380 x 10mm (22" x 14³/₄" x 1¹/₃")

With frame:

630 x 450mm (24¹/₂" x 17¹/₂")

Matching Frame Sets also available:

6366A Brilliant White

6366B Colonial White

6366N Jet Black

*Please turn to pages 19 and 72-78 for more details

MASTERPIECE *Collection*



RAFFAELLO SANZIO, KNOWN AS RAPHAEL (1483-1520)

Born in Urbino, the son of an artist, Raphael was called to Rome in 1508 to carry out a number of commissions for Pope Julius II. Thereafter his work was in great demand from wealthy Roman merchants and noblemen. Influenced by both Leonardo da Vinci and Michelangelo, he nevertheless established his own distinctive style and became one of the great Classical artists of the High Renaissance.

Galatea (1511-12) was a fresco commissioned by the Siennese banker, Agostino Chigi, to decorate the wall of a loggia at his riverside villa. It shows the nymph, Galatea, dramatically surrounded by "amorini, mermen, hippocamps and nereids" and survives today in what is now called the Villa Farnesina, after a later owner.

Raphael: Galatea (1511-12), Villa Farnesina, Rome

6365 - plain back to install in a field of tiles*

6365WB - with brackets to hang as a picture*

Picture tile only: 560 x 420mm x 10mm (22" x 16" x 1/8")

With frame: 630 x 490mm (24 1/2" x 19")

Matching Frame Sets also available:

6370A Brilliant White **6370B** Colonial White **6370N** Jet Black

*Please see opposite and pages 72-78 for more details

SANDRO BOTTICELLI (1444-1510)

Widely acknowledged as one of the greatest Italian Renaissance painters, Botticelli lived and worked in Florence where he attracted the patronage of the powerful Medici family. He had a distinctive, personal style and drew his inspiration from a multitude of sources, classical and Biblical as well as contemporary. The Birth of Venus (c.1481), perhaps his best known work, was commissioned for one of the many Medici villas around Florence and is now in the Uffizi Gallery.

Botticelli: Birth of Venus (c.1481), Uffizi Gallery, Florence.

6364 - plain back to install in a field of tiles*

6364WB - with brackets to hang as a picture*

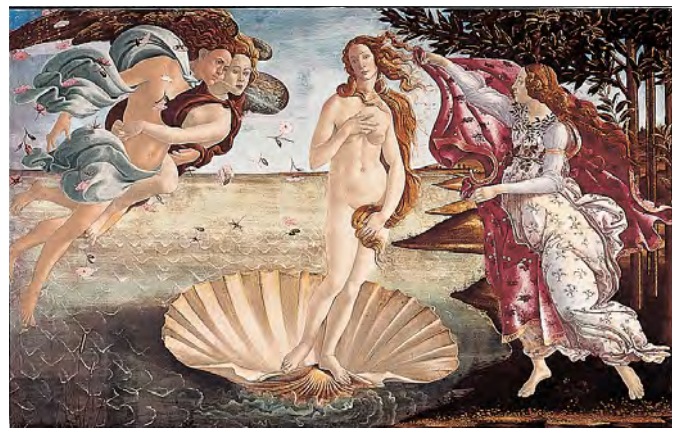
Picture tile only: 360 x 560mm x 10mm (14" x 22" x 1/8")

With frame: 430 x 630mm (16 3/4" x 24 1/2")

Matching Frame Sets also available:

6369A Brilliant White **6369B** Colonial White **6369N** Jet Black

*Please see opposite and pages 72-78 for more details





▲ 6364 Birth of Venus with 6369N frame set Jet Black, 6365B Galatea with 6370N frame set Jet Black, A9000 Field tile Brilliant White, N9901 Victoria, N9905 Dentil, N9022A Parthenon, N9929 Plain Cornice, N9906 Egg & Dart, N9025A Greek Key, N9000 Field tile, all Jet Black.

MASTERPIECE FRAME SETS

Enhance your Masterpiece Tile with one of these custom designed frame sets. Three classic colour options ensure perfect harmony with your Masterpiece Tile and your Artworks tile scheme.

*Use the codes quoted below your chosen Masterpiece Tile(s) to ensure the correct fit. Please see Important Information pages (72-78) for details on fixing.



Brilliant White



Colonial White



Jet Black





▲ 6362WB *The Water-Lily Pond*, B9901 *Victoria*, B9002 *Half Field* tile, both *Colonial White*

MASTERPIECE *Collection*

CLAUDE MONET (1840-1926)

Monet was the master of the Impressionist movement in late 19th century France. His passion was depicting the effects of light, particularly on water, which often led him to paint the same scene several times over in a variety of daylight conditions. He lived for a few years at Argenteuil on the River Seine and later bought a house near the village of Giverny. Its large garden is where many of his greatest masterpieces were painted. *The Water-Lily Pond* (1899) is one of a series featuring Monet's own water garden and Japanese footbridge at Giverny in which his use of colour and light is at its most exquisite. *Argenteuil* (c.1875) shows a variety of colourful boats moored on the River Seine. It was probably painted from the artist's specially built studio boat.

◀ 6363WB *Argenteuil*, B9901 *Victoria*, B9002 *Half Field* tile, B9903 *Skirting*, all *Colonial White*.



Monet: *Argenteuil* (c.1875),
Musée de l'Orangerie, Paris.

6363 - plain back to install in a field of tiles*

6363WB - with brackets to hang as a picture*

Picture tile only:

380 x 445mm x 10mm (14³/₄" x 17¹/₄" x 1¹/₃")

With frame:

450 x 515mm (17¹/₂" x 20")

Matching Frame Sets also available:

6368A Brilliant White

6368B Colonial White

6368N Black



Monet: *The Water-Lily Pond* (1899),
National Gallery, London.

6362 - plain back to install in a field of tiles*

6362WB - with brackets to hang as a picture*

Picture tile only:

380 x 395mm x 10mm

(14³/₄" x 15¹/₂" x 1¹/₃")

With frame:

450 x 465mm (17¹/₂" x 18")

Matching Frame Sets also available:

6367A Brilliant White

6367B Colonial White

6367N Black

*Please turn to pages 72-78 for more details



◀ 6092A Single tile, 6030A Corner tile, 6031A Border tile, A9000 Field tile, all Brilliant White.

▼ Detail 6030A Corner tile and 6031A Border tile, Brilliant White.



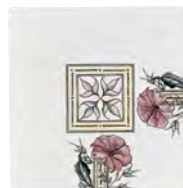
VICTORIAN *Collection*

Many of the tiles produced by the English manufacturers of the 19th Century were specifically designed for fireplaces. Here the standard requirement was for vertical five-tile sets which were positioned either side of the grate. We have reproduced a selection of the best of these for use as decorative wall tiles. Their proportions make them particularly appropriate for shower cubicles, and they can also be successfully incorporated into a wide variety of settings. There are matching floral borders for all our Victorian tile sets, which can also be used as attractive decorative features in their own right.

The background glaze colour for Plant & Urn is either Colonial White or Brilliant White. See pages 60-67 for details of plain and moulded tiles.

Background glaze colours vary from one set to another; please take careful note of the colour before ordering matching field and moulded tiles.

PLANT & URN



Corner tile
6030A Brilliant White
6030B Colonial White
152 x 152mm (6" x 6")



Border tile (flower on left)
6031A Brilliant White
6031B Colonial White
152 x 152mm (6" x 6")



Border tile (flower on right)
6032A Brilliant White
6032B Colonial White
152 x 152mm (6" x 6")



Single tile
6092A Brilliant White
6092B Colonial White
152 x 152mm (6" x 6")

POPPY & WHEATSHEAF



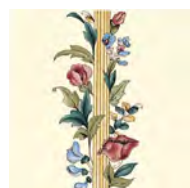
6003B Colonial White
Poppy and
Wheat sheaf
5-tile set
Each tile
152 x 152mm
(6" x 6")



6027B Colonial White
Corner tile
152 x 152mm
(6" x 6")



6028B Colonial White
Border tile
(with wheat)
152 x 152mm
(6" x 6")



6029B Colonial White
Border tile
(no wheat)
152 x 152mm
(6" x 6")



6088B Colonial White
Single tile
152 x 152mm
(6" x 6")

VICTORIAN *Collection*

BLUE IRIS

The background glaze colour is Brilliant White. See pages 60-67 for details of plain and moulded tiles.



6080A Blue Iris 5-tile set
Each tile 152 x 152mm (6" x 6")



6084A Blue Iris 6-tile panel, Each tile 152 x 152mm (6" x 6")



▲ 6080A Blue Iris 5-tile set, 6084A 6-tile panel, 6085A Half border, 6082A Corner, 6081A Border, A9000 Field tile Brilliant White, GLM9909 Omega, GLM9900 Albert, GLM9901 Victoria, GLM9903 Skirting, GLM9002 Half tile, GLM9000 Field tile, all Lilac Mist. Floor: Original Style Victorian Floor Tiles Arundel pattern with modified Browning border.



6093A Single tile
152 x 152mm (6" x 6")



6081A Border tile, full size
152 x 152mm (6" x 6")



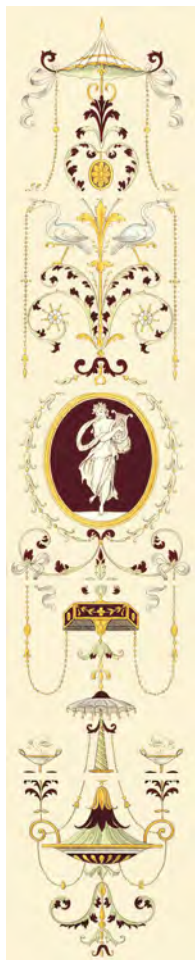
6082A Corner tile
152 x 152mm (6" x 6")



6085A Border tile, half size
152x76mm (6"x 3")

CAMEO CAROUSEL

*The background glaze colour is
Colonial White. See pages 60-67 for
details of plain and moulded tiles.*



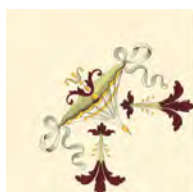
6006B Cameo Carousel
5-tile set (with harp)
Each tile 152 x 152mm
(6" x 6")



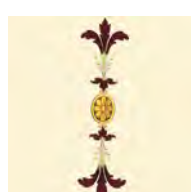
6007B Cameo Carousel
5-tile set (with scarf)
Each tile: 152 x 152mm
(6" x 6")



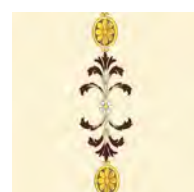
▲ 6006B Cameo Carousel (with harp) 5-tile set, 6033B Corner, 6034B Border, B9000 Field tile Colonial White, F9901 Victoria F9000 Field tile, F9902 Rope, F9903 Skirting, all Burgundy. Floor: Original Style Victorian Floor Tiles York pattern with Telford border.



6033B Corner tile
152 x 152mm (6" x 6")



6034B Border tile
152 x 152mm (6" x 6")



6035B Border tile
152 x 152mm (6" x 6")



Detail 6064B Border tile. ▲

B9000 Field tile Colonial White, GSY9921 Sigma Summer Yellow, 6064B border, 6008B Birds and Butterfly 5-tile set, 6009B Birds and Rushes 5-tile set, GSY9002 Half tile Summer Yellow.

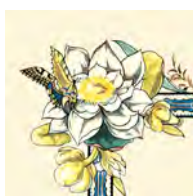
Floor: Original Style Victorian Floor Tiles
Dorchester pattern with modified Kingsley border with Cardigan inset.



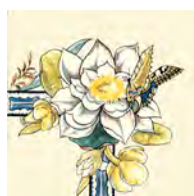
VICTORIAN *Collection*

BIRDS & BUTTERFLY

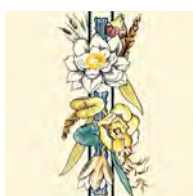
The background glaze colour is Colonial White.
See pages 60-67 for details of plain and moulded tiles.



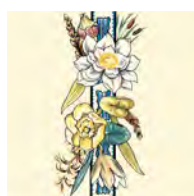
6063B Corner tile
152 x 152mm (6" x 6")



6067B Corner tile
152 x 152mm (6" x 6")



6064B Border tile
152 x 152mm (6" x 6")



6065B Border tile
152 x 152mm (6" x 6")



6008B Birds and Butterfly
5-tile set. Each tile
152 x 152mm (6" x 6")



6009B Birds and Rushes
5-tile set. Each tile
152 x 152mm (6" x 6")



- ▲ 6860B Pomegranate Continuous Pattern, B9900 Albert Colonial White.
- ▲ 6861B Floral Trellis Continuous Pattern, F9909 Sigma Burgundy, B9924 Ribbon & Reed Colonial White.
- ▶ B9000 Field tile, B9900 Albert, B9221 Rectangle, B9921 Sigma, B9927 Astragal, all Colonial White, 6019B, 6020B Symmetrical Classic Field tile and quarter tile.
Floor: Original Style Earthworks Lascaux Polished Limestone.

VICTORIAN *Collection*

CONTINUOUS PATTERNS

These cleverly designed Victorian tiles are ideal for smaller tiled areas such as fitted kitchens and basin splashbacks. Laid in horizontal friezes or rectangular blocks they form attractive repeating patterns which can be neatly edged with matching moulded tiles.

The background glaze colour is Colonial White.

See pages 60-67 for details of plain and moulded tiles.



6862B Bluebird
152 x 152mm (6" x 6")



6861B Floral Trellis
152 x 152mm (6" x 6")



6860B Pomegranate
152 x 152mm (6" x 6")

SINGLE TILES

We have reproduced these authentic designs with careful attention to detail. They can be used as running friezes or placed randomly as highlights in a field of plain coloured tiles.

The background glaze colour is Colonial White.



6020B Symmetrical
classical quarter tile,
measures 152 x 38 x 7mm
(6" x 1 1/2" x 1/3")



6017B Windflower
152 x 152mm (6" x 6")



6014B Apple Blossom
152 x 152mm (6" x 6")



6016B Peony
152 x 152mm (6" x 6")



6011B Poppies, scroll border
152 x 152mm (6" x 6")



6013B Sweetbriar
152 x 152mm (6" x 6")



6012B Symmetrical
floral pattern
152 x 152mm (6" x 6")



6010B Poppies,
floral border
152 x 152mm (6" x 6")



6018B Blue Poppies
152 x 152mm (6" x 6")



6019B Symmetrical
classical pattern
152 x 152mm (6" x 6")





▲ 6398B Corded Poppies Border, B9002 Half tile, B9221 Rectangle, both Colonial White, F9903 Skirting, F9905 Dentil, F9906 Egg & Dart, F9909 Omega, all Burgundy. Floor: customer's own.

VICTORIAN *Collection*

Use these colourful repeat patterns to create running friezes and add character to plain areas of tiling.

The background glaze colour is either Colonial White or Brilliant White. See pages 60-67 for details of plain and moulded tiles.



6388A Trumpet Gentian Border Blue, GSY9909 Omega ▲
Summer Yellow, GLM9900 Albert Lilac Mist, A9002 Half
tile, A9005 REL tile, both Brilliant White.

6382B Knot Garden Border Pink, 6376B Trailing Ivy Border
Green, F9909 Omega, F9905 Dentil, both Burgundy, B9000
Field tile, B9002 Half tile, both Colonial White. ►



CLASSICAL DECORATIVE BORDERS

152mm x 25mm (6" x 1")



Trailing Ivy, green
6376A Brilliant White
6376B Colonial White



Trailing Ivy, blue
6377A Brilliant White
6377B Colonial White



Floral Rope, blue & yellow
6379A Brilliant White
6379B Colonial White

152mm x 50mm (6" x 2")



Scallop Shells, blue & yellow
6380A Brilliant White
6380B Colonial White



Art Nouveau Lily, pink
6384A Brilliant White
6384B Colonial White



Trailing Periwinkle, blue
6386A Brilliant White
6386B Colonial White



Scallop Shells, green & buff
6381A Brilliant White
6381B Colonial White



Art Nouveau Lily, green
6385A Brilliant White
6385B Colonial White



Autumn Foliage
6391A Brilliant White
6391B Colonial White



Knot Garden, pink
6382A Brilliant White
6382B Colonial White



Trumpet Gentian, blue
6388A Brilliant White
6388B Colonial White



Seashells border tile
6785A Brilliant White



Knot Garden, blue & yellow
6383A Brilliant White
6383B Colonial White



Trumpet Gentian, pink
6389A Brilliant White
6389B Colonial White

152mm x 76mm (6" x 3")



Arch and Ivy, blue
6392A Brilliant White
6392B Colonial White



Arch and Ivy, pink
6393A Brilliant White
6393B Colonial White



Corded Poppies, red
6398A Brilliant White
6398B Colonial White



WILLIAM DE MORGAN

William De Morgan (1839-1917) was one of the foremost English tile designers of the late Victorian and Edwardian period. A lifelong friend of William Morris, the founder of the Arts and Crafts movement, he was precisely the kind of designer-craftsman that the movement admired. Although trained as an artist, De Morgan also inherited a love of science from his father and became an expert on the chemistry of ceramic glazes. Through painstaking research he achieved distinctive, lustrous colours to complement his lively designs, many of which were inspired by Persian art, including the Peacock border featured here.

*The background glaze colour is Brilliant White.
See pages 60-67 for details of plain and moulded tiles.*



6960A Peacock border 2-tile set
Each tile 152 x 76mm (6" x 3")



- ▲ 6990B Fish frieze 2-tile set, GJT9909 Omega Sepia, GJB9907 Wave, Jade Breeze, B9909 Omega, B9000 Field tile, both Colonial White.
- ◀ 6960A Peacock 2-tile set, G9900 Albert, G9000 Field tile, both Royal Blue.
- ▶ 6991B Shell frieze 2-tile set, B9902 Rope Colonial White, GJB9000 Field tile Jade Breeze. Floor: Original Style Victorian Floor Tiles Huntingdon pattern.

ARTS & Crafts

W. B. SIMPSON

During its short history from 1873 to 1910 the firm of W. B. Simpson produced some of the most original and beautifully decorated tiles of the period. We have reproduced the Fish and Shell designs, which make excellent decorative friezes to set against a background of plain and moulded tiles.

The background glaze colour is Colonial White.

See pages 60-67 for details of plain and moulded tiles.



6991B Shell frieze 2-tile set
Each tile 152 x 76 x 7mm (6" x 3" x 1/8")



6990B Fish frieze 2-tile set
Each tile 152 x 152 x 7mm (6" x 6" x 1/8")



Detail of 6050B Ivy. ▲

6054B Orchid tile, 6055B Quarter tile, ►
B9000 Colonial White field tile.



ART Nouveau

ALPHONSE MUCHA

Alphonse Mucha (1860-1939) rose from obscurity in Moravia to become one of the most celebrated Parisian artists and illustrators of his time. He was a leading exponent of the Art Nouveau style, popularising such motifs as flowers on slender, twining stems and romantic female figures with abundant flowing hair. We have reproduced six of his finest designs and pictures as decorated ceramic tiles and tile panels. These have been expanded into a fully co-ordinated tile collection with the addition of mirror images, single floral tiles and matching borders featuring motifs from the original pictures.

*The background glaze colour is Colonial White.
See pages 60-67 for details of plain and moulded tiles.*



6050B Ivy
(Le Lierre) 1901
152 x 152mm (6" x 6")



6054B Orchid
(Orchidee) 1902
152 x 152mm (6" x 6")



6051B Ivy quarter tile,
152 x 38mm (6" x 1½")



6055B Orchid quarter tile,
152 x 38mm (6" x 1½")





- ▲ Detail of 6041B Nocturnal Slumber 3-tile set.
- ◀ 6047B Spring 3-tile set, 6062B Spring Border tile, 6061B and 6066B Spring Corner tiles, B9000 Field tile Colonial White, F9000 Field tile, F9901 Victoria, F9900 Albert, all Burgundy.
- ▶ 6041B, 6042B Slumber 3-tile sets, 6059B Corner, 6060B Border, B9000 Field tile Colonial White. Although painted wooden skirting board and dado rail are shown, B9900 Albert and B9903 Skirting, both Colonial White, would be suitable. Floor: customer's own. See Original Style Victorian Floor Tiles brochure for similar patterns.

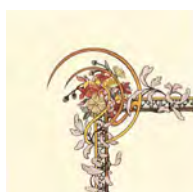
ART *Nouveau*



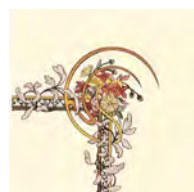
6047B 3-tile set. Each tile
152 x 152mm (6" x 6")



6048B 3-tile set. Each tile
152 x 152mm (6" x 6")



6061B Corner tile
152 x 152mm (6" x 6")



6066B Corner tile
152 x 152mm (6" x 6")



6049B Single floral tile
152 x 152mm (6" x 6")



6062B Border tile
152 x 152mm (6" x 6")

ALPHONSE MUCHA SPRING (Printemps) 1900

The background glaze colour is Colonial White.
See pages 60-67 for details of plain and moulded tiles.



ALPHONSE MUCHA NOCTURNAL SLUMBER

(Repos de la Nuit) 1899

The background glaze colour is Colonial White.

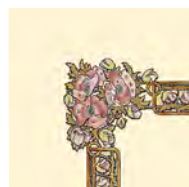
See pages 60-67 for details of plain and moulded tiles.



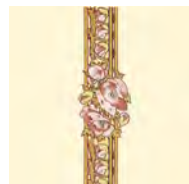
6041B 3-tile set. Each tile
152 x 152mm (6" x 6")



6042B 3-tile set. Each tile
152 x 152mm (6" x 6")



6059B Corner tile
152 x 152mm (6" x 6")



6060B Border tile
152 x 152mm (6" x 6")



6043B Single floral tile
152 x 152mm (6" x 6")



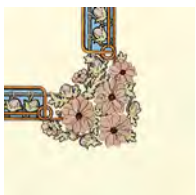
6046B Quarter tile
152 x 38mm (6" x 1½")



ART *Nouveau*



6058B Border tile
152 x 152mm (6" x 6")



6057B Corner tile
152 x 152mm (6" x 6")



6040B Single floral tile
152 x 152mm (6" x 6")



6046B Quarter tile
152x38mm (6"x1 1/2")

ALPHONSE MUCHA EVENING REVERIE

(Reverie du soir) 1899

*The background glaze colour is Colonial White.
See pages 60-67 for details of plain and moulded tiles.*



6038B 3-tile set. Each tile
152 x 152mm (6" x 6")



6039B 3-tile set. Each tile
152 x 152mm (6" x 6")





▲ 6038B and 9B Spring 3-tile sets, 6046B Quarter tile, GJT9000 field tile, GJT9900 Albert, GJT9909 Omega, all Sepia, B9000 Field tile Colonial White, A9900 Albert, A9909 Omega, both Brilliant White. Floor: Original Style Victorian Floor Tiles York pattern incorporating Cardigan decorated tile.

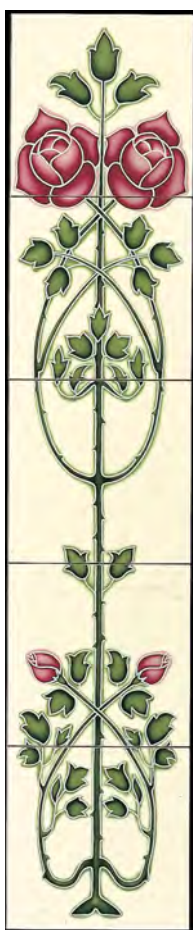




- ▲ Detail of 6083B Rose and Bud raised line 5-tile set.
- ◄ 6996B Henrietta 3-tile set, B9000 Field tile Colonial White.
- 6083B Rose and Bud raised line 5-tile set, E9000 Field tile, E9900 Albert, E9929 Plain Cornice, E9905 Dentil, E9906 Egg & Dart, all Victorian Green, B9000 Field tile Colonial White. Floor: Original Style Victorian Floor Tiles Arundel pattern with bespoke border.



RELIEF Tiles



RAISED-LINE TILES

Raised-line decoration was a technique developed in the late 19th Century and was used extensively during the Arts and Crafts and Art Nouveau periods. The outline of the pattern was embossed on to the tile body and different coloured glazes were applied to the 'walled' sections created. The Original Style Rose and Bud tile set is a faithful reproduction of this style using specially developed modern production techniques.

The background glaze colour is Colonial White. See pages 60-67 for details of plain and moulded tiles.

6083B Rose and Bud raised line 5-tile set
Each tile 152 x 152mm (6" x 6")



6995B Angelina
Each tile
152 x 152mm (6" x 6")



6996B Henrietta
Each tile
152 x 152mm (6" x 6")

RELIEF MOULDED TILES

With delightful Art Nouveau styling, this highly detailed, three-tile set is produced by a raised pattern technique called Relief Moulding. Each tile is slip cast in elegantly sculptured moulds and then dry fired before being individually hand painted by one of our skilled artists. After glazing and a further firing in a high temperature kiln, the result is a unique piece that will provide pleasure for years to come.

The background glaze colour is Colonial White. See pages 60-67 for details of plain and moulded tiles.





▲ 973B Belle Epoque, B9000 Field tile Colonial White, F9928 Hogarth, F9927 Astragal, F9903 Skirting, all Burgundy, GPV9000 Field tile in Pavillion Green. Floor: Original Style Victorian Floor Tiles Arundel pattern with bespoke border.



▲ 5974B Madonna Border, GSY9900 Albert, GSY9909 Omega, both Summer Yellow, B9000 Field tile Colonial White.

RELIEF Tiles

TUBE LINED SINGLE TILES

This highly skilled method of decoration evolved towards the latter part of the 19th Century and was used to embellish ornaments, such as bowls and vases, as well as ceramic tiles. It requires the outline for each design to be piped by hand onto the tile. Different coloured translucent glazes are then applied – again by hand – to separate areas of the design to create exquisite works of art.

The background glaze colour is Colonial White. See pages 60-67 for details of plain and moulded tiles.



5970B Liberty
152 x 152mm (6" x 6")



5971B Moulin Rouge
152 x 152mm (6" x 6")



5972B Montmartre
152 x 152mm (6" x 6")



5973B Belle Epoque
152 x 152mm (6" x 6")



5976B Lilium border
152 x 76mm (6" x 3")



5975B Lotus Flower border
152 x 76mm (6" x 3")



5974B Madonna border
152 x 76mm (6" x 3")



5977B Belle Epoque border
152 x 76mm (6" x 3")

◀ 5970B Liberty, 5972B Montmartre, 5974B Madonna Border, GSY9921 Sigma, GSY9903 Skirting, GSY9909 Omega, GSY9900 Albert, all Summer Yellow, B9000 Field tile Colonial White.



▲ 6994B Glasgow Border, N9921 Sigma Jet Black, GPG9002 Half tile Palm Green, B9000 Field tile Colonial White.

MACKINTOSH

Style



6992B Glasgow Rose
RH 3-tile set. Each tile
152 x 152mm (6" x 6")



6993B Glasgow Rose
LH 3-tile set. Each tile
152 x 152mm (6" x 6")

By the end of the 19th Century the Glasgow School of Art was one of the leading academies in Europe and its reputation for new ideas in decorative arts and design reached a zenith. At the very heart of this success was the talented artist and architect Charles Rennie Mackintosh. Original Style's Glasgow Rose three-tile sets are a tribute to the enduring interest in Mackintosh and evoke the very essence of his distinctive style.

The background glaze colour is Colonial White.

See pages 60-67 for details of plain and moulded tiles.



6994B Glasgow Border
152 x 25mm (6" x 1")





6490 Manhattan Border, A9000 Field tile, A9002 Half tile, both Brilliant White, GAQ9002 Half tile, GAQ9909 Omega, GAQ9903 Skirting, all Aqua Source. Floor: Original Style Victorian Floor Tiles Art Deco pattern with Shelley border.

N9921 Sigma, N9903 Skirting, N9901 Victoria, all Jet Black, GLS9221 Rectangle London Stone, A9000 Field tile, A9002 Half tile, both Brilliant White, 6480 Fan Tile, 6490 Manhattan Border. Floor: Original Style Victorian Floor Tiles Kingsley border with Earthworks Venetian Mosaics Bianco.

6490 Manhattan Border, N9921 Sigma, N9901 Victoria, both Jet Black.



ART Deco

Possibly the 20th Century's most outstanding design movement, and certainly one of its most memorable, the enduringly popular Art Deco style evokes all the bold, daring modernism of the Twenties. Clean lines and precise symmetry combine in visually arresting shapes and forms which both challenge and inspire. And with real platinum and gold used on every 6" tile, you can be sure they make the ultimate décor statement.

The background glaze colour is Brilliant White. See pages 60-67 for details of plain and moulded tiles.

Under studio lighting the platinum and gold used on Art Deco tiles may appear as black. Before making your choice it is always advisable to ask your Original Style supplier to show you samples.



6480 Fan Tile
152 x 152mm (6" x 6")



6480N Black Fan Tile
152 x 152mm (6" x 6")



6490N Black Manhattan Border
152 x 50mm (6" x 2")



6490 Manhattan Border
152 x 50mm (6" x 2")





HAND *Decorated*

These elegant hand-decorated tiles have been created to complement our unrivalled selection of moulded and plain tiles. The designs are typically Victorian and can be used to add the finishing touches to your décor. Available in Burgundy, Jet Black, Royal Blue, Jade Breeze and Lilac Mist on the background Brilliant White.

When ordering please pre-fix the code number with the relevant colour code as shown in moulded tiles sections (i.e. GLM9024A Lilac Mist Love Knot).



9022A Parthenon
152 x 75mm (6" x 3")
(Shown in Burgundy F9022A)



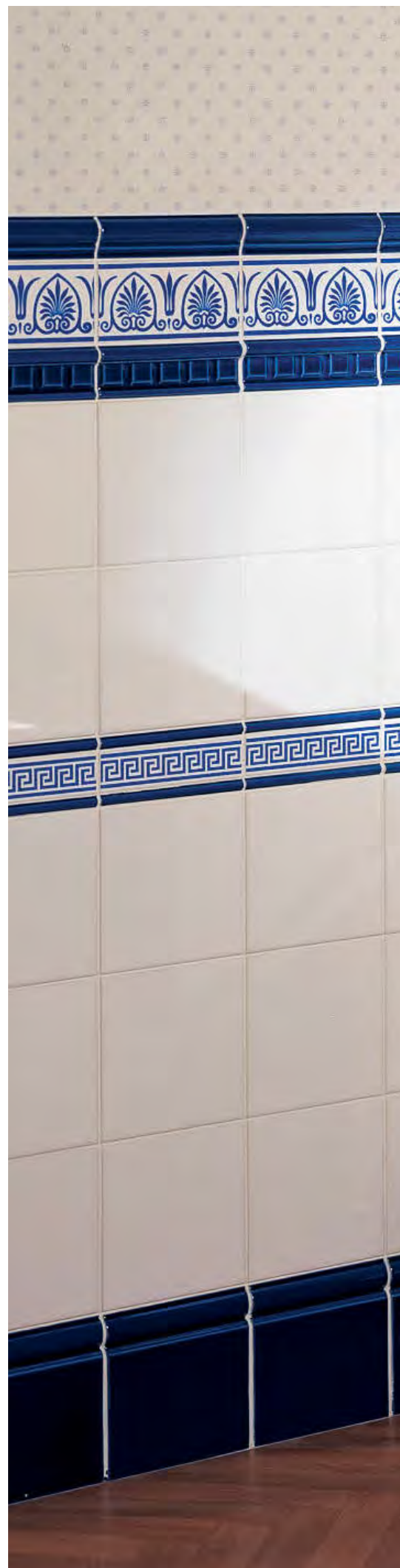
9023A Acanthus
152 x 50mm (6" x 2")
(Shown in Jade Breeze GJB9023A)



9024A Love Knot
152 x 50mm (6" x 2")
(Shown in Lilac Mist GLM9024A)



9025A Greek Key
152 x 40mm (6" x 1 1/2")
(Shown in Royal Blue G9025A)







▲ CKB9004 Crackle Metro Colonial White.

CRACKLE GLAZE

Tiles

These tiles with a subtle crackled glaze effect are perfect when you want to achieve a vintage, aged look. Available as metro tiles, metro finishing pieces and half tiles in two colours.



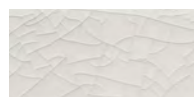
CKA9002 Crackle HalfTile
Brilliant White 150 x 75mm
(6" x 3")



CKA9004 Crackle Metro
Brilliant White 150 x 75mm
(6" x 3")



CKA9010 Crackle Metro
Finishing Piece Brilliant White
75 x 75mm (3" x 3")



Detail to show Crackle



CKB9002 Crackle HalfTile
Colonial White 150 x 75mm
(6" x 3")



CKB9004 Crackle Metro
Colonial White 150 x 75mm
(6" x 3")



CKB9010 Crackle Metro
Finishing Piece Brilliant White
75 x 75mm (3" x 3")

*When used in wet areas crackle glazed tiles should be sealed to prevent possible discolouration from water ingress. Please refer to the important information on page 72-78.



◀ A9004 Metro Brilliant White, N9901 Victoria, N9921 Sigma, N9903 Skirting, all Jet Black, 6490 Manhattan Border. Floor: Original Style Victorian Floor Tiles Cambridge pattern.

▼ N9004 Metro Jet Black.



METRO *Tiles*

Still popular in today's contemporary living spaces, bevelled tiles like these have been used in Paris Metro underground stations since 1903. They typify its iconic Art Nouveau style. Use in the brick bond pattern for an authentic Paris match. The Finishing Piece can be used as part of a design and is also useful to ensure neat edges and minimal cutting.



A9004 Metro Brilliant White
152 x 75mm (6" x 3")



A9010 Metro Finishing Piece
Brilliant White
75 x 75mm (3" x 3")



B9004 Metro Colonial White
152 x 75mm (6" x 3")



B9010 Metro Finishing Piece
Colonial White
75 x 75mm (3" x 3")



GPB9004 Metro Palladian Beige
152 x 75mm (6" x 3")



GPB9010 Metro Finishing Piece
Palladian Beige
75 x 75mm (3" x 3")



GJB9004 Metro Jade Breeze
152 x 75mm (6" x 3")



GJB9010 Metro Finishing Piece
Jade Breeze
75 x 75mm (3" x 3")



GWB9004 Metro Windsor Blue
152 x 75mm (6" x 3")



GWB9010 Metro Finishing Piece
Windsor Blue
75 x 75mm (3" x 3")



G9004 Metro Royal Blue
152 x 75mm (6" x 3")



G9010 Metro Finishing Piece
Royal Blue
75 x 75mm (3" x 3")



F9004 Metro Burgundy
152 x 75mm (6" x 3")



F9010 Metro Finishing Piece
Burgundy
75 x 75mm (3" x 3")



N9004 Metro Jet Black
152 x 75mm (6" x 3")



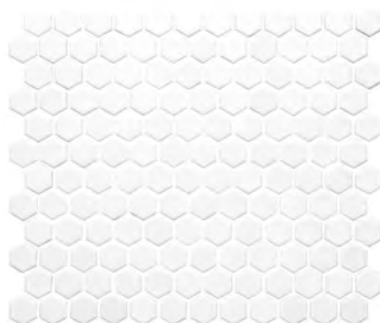
N9010 Metro Finishing Piece
Jet Black
75 x 75mm (3" x 3")



- ▲ N9903 Skirting Jet Black, A9000 Field tile Brilliant White.
Floor: CS-OCTDOT Classic Octagon & Dot.
- ▲ CS-BSKMOS Basketweave.
- ▶ A9903 Skirting, A9000 Field tile Brilliant White.
Floor: CS-PRMOON Moonbeam Penny Round.

MOSAIC Floor Tiles

Up to now the natural partner and most obvious choice for Artworks wall tiles has been Original Style Victorian flooring, as both can trace their roots back to the elegant Victorian era. However, these beautiful mosaic floor tiles are an extremely attractive alternative. They can also be a practical solution for bathrooms and especially for small spaces, and, like Victorian floor tiles, are perfect when used with underfloor heating.



CS-HNYCOMW White Honeycomb
297 x 257 x 6mm (11³/₄" x 10¹/₈" x 1¹/₄")



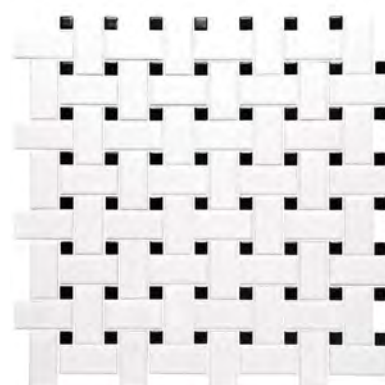
CS-HNYCOMWB Black and White Honeycomb
297 x 257 x 6mm (11³/₄" x 10¹/₈" x 1¹/₄")



CS-PRMOON Moonbeam Penny Round
292 x 310 x 6mm (11¹/₂" x 12¹/₄" x 1¹/₄")



CS-OCTDOT Classic Octagon & Dot
292 x 292 x 6mm (11¹/₂" x 11¹/₂" x 1¹/₄")



CS-BSKMOS Basketweave
297 x 297 x 6mm (11³/₄" x 11³/₄" x 1¹/₄")





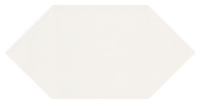


- ▲ A9903 Skirting Brilliant White. Floor, as image, right.
- A9000 Field tile, A9921 Sigma, A9903 Skirting, all Brilliant White, N9025A Greek Key Jet Black, N9002 Half tile, N9221 Rectangle and N9905 Dentil Moulding, all Jet Black.
Floor: Original Style Victorian Floor Tiles Huntingdon pattern in Black and Dover White, with modified Bronte border incorporating Colbrooke.
- ◄ A9900 Albert, A9000 Field tile, A9903 Skirting, all Brilliant White. Floor: Cambridge pattern with Cavendish border.

VICTORIAN *Floor Tiles*

Artworks wall tiles and Victorian Floor tiles are perfect together. For more floor designs, colour options, how to get a brochure, and full information on Original Style Victorian Floor Tiles, please visit www.originalstyle.com

HUNTINGDON PATTERN WITH BRONTE BORDER



7134V Hexagon Dover White
151 x 75mm (6" x 3")



6302V Square Black
53 x 53mm (approx 2" x 2")

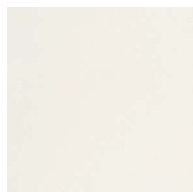


6812V Triangle Grey
50 x 36 x 36mm
(2" x 1½" x 1½")

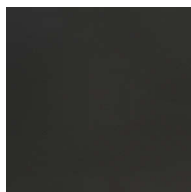


7945V Colebrooke Black
on Dover White
53 x 53mm (approx 2" x 2")

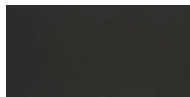
CAMBRIDGE PATTERN WITH CAVENDISH BORDER



7106V Square Dover White
151 x 151mm (approx 6" x 6")



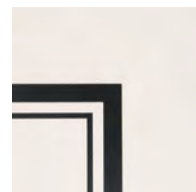
6306V Square Black
151 x 151mm (approx 6" x 6")



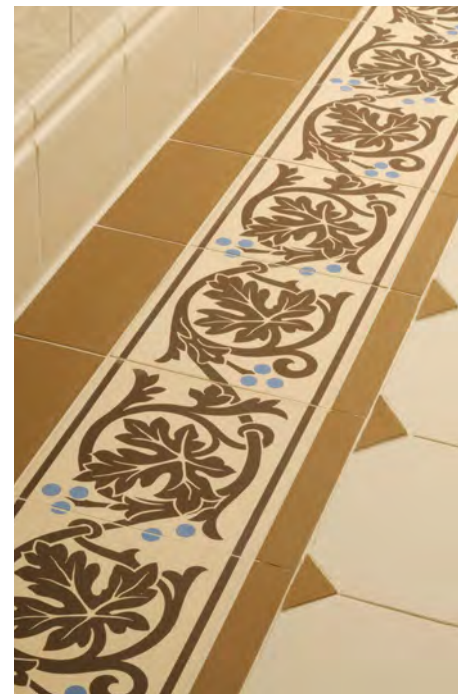
6323V Rectangle Black
151 x 75mm (approx 6" x 3")



7932V Cavendish Border Black
on Dover White 151 x 151mm
(approx 6" x 6")



7933V Cavendish Internal
Corner Black on Dover White
151 x 151mm (approx 6" x 6")



- ▲ 6569V Shaftesbury Brown on White 2-tile border set.
- ◀ A9002 Half tile, A9903 Skirting, both Brilliant White.
Floor: 6606V Square Blue, 7106V Square Dover White, 7123V Rectangle Dover White, 7919V Trafalgar Border, 7921 Trafalgar Internal Corner.
- ▶ B9002 Half tile, B9903 Skirting, both Colonial White.
Floor: Original Style Victorian Floor Tiles York pattern in Dover White and Royal Palladian with Shaftesbury Brown on White 2-tile border set.

VICTORIAN *Floor Tiles*

Our Victorian Floor Tile range includes different shapes, sizes and colours to make up any number of designs, both modern and authentic 19th century designs taken from original Victorian Tile pattern catalogues. It also includes hand decorated individual tiles and tile-sets as well as borders and corners, such as some of the examples shown on these pages.

TRAFALGAR BORDER



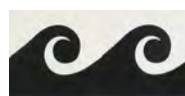
7919V Border Blue on
Dover White 151 x 75mm
(approx 6" x 3")



7920V External Corner
Blue on Dover White
75 x 75mm
(approx 3" x 3")



7921V Internal Corner
Blue on Dover White
75 x 75mm
(approx 3" x 3")



7922V Border Black on
Dover White 151 x 75mm
(approx 6" x 3")



7924V External Corner
Black on Dover White
75 x 75mm
(approx 3" x 3")



7923V Internal Corner
Black on Dover White
75 x 75mm
(approx 3" x 3")



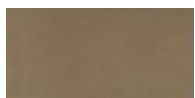
YORK PATTERN WITH SHAFTESBURY BORDER



7131V Octagon Dover White
151 x 151mm (approx 6" x 6")



7421V Rectangle Royal Palladian
151 x 24mm (approx 6" x 1")



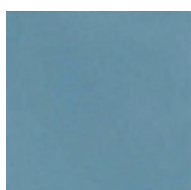
7423V Rectangle Royal Palladian
151 x 75mm (approx 6" x 3")



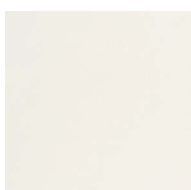
7402V Square Royal Palladian
53 x 53mm (approx 2" x 2")



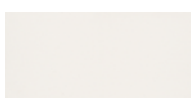
6569V Shaftesbury Brown on White 2-tile border set,
each tile 151 x 151mm (approx 6" x 6")



6606V Square Blue
151 x 151mm (approx 6" x 6")



7106V Square Dover White
151 x 151mm (approx 6" x 6")



7123V Rectangle Dover White
151 x 75mm (approx 6" x 3")



- ▲ GNE9909 Omega, GNE9923 Scroll, GNE9907 Wave, all Antique Bronze, B9002 Half tile Colonial White.
- ◀ PLAT9002 Half tiles Platinum.
- GOLD9921 Sigma, GOLD9002 Half tile, GOLD9003 Skirting, all in Gold, B9032G Fleur de Lis Gold on Colonial White. Floor: Original Style Tileworks Parisian White Polished Porcelain.

GOLD, PLATINUM & *Antique Bronze*

Although the mouldings below are ceramic like all the other tiles in the brochure, the glaze gives them a look of antique bronze. The subtle metallic sheen will lend an air of opulence to any room. Be dazzled by the reflective qualities of sumptuous half tiles, skirtings and mouldings in platinum and gold (see right).

ANTIQUE BRONZE MOULDINGS



GNE9905 Dentil
152mm x 50mm (6" x 2")



GNE9907 Wave
152mm x 60mm (6" x 2 3/8")



GNE9906 Egg & Dart
152mm x 65mm (6" x 2 1/2")



GNE9902 Rope
152mm x 40mm (6" x 1 1/2")



GNE9923 Scroll
152mm x 29mm (6" x 1 1/8")



GNE9909 Omega
152mm x 12mm (6" x 1/2")



GNE9927 Astragal
152mm x 21mm (6" x 3/4")



GOLD & PLATINUM TILES & MOULDINGS



PLAT9903 Skirting
152mm x 152mm (6" x 6")



PLAT9002 Half Field tile
152mm x 75mm (6" x 3")



PLAT9921 Sigma
152mm x 26mm (6" x 1")



PLAT9909 Omega
152mm x 12mm (6" x 1/2")



GOLD9903 Skirting
152mm x 152mm (6" x 6")



GOLD9002 Half Field tile
152mm x 75mm (6" x 3")



GOLD9921 Sigma
152mm x 26mm (6" x 1")



GOLD9909 Omega
152mm x 12mm (6" x 1/2")

COLOURS *and Trims*

BRILLIANT WHITE



A9929 Plain Cornice
152mm x 75mm (6"x 3")



A9928 Hogarth
152mm x 38mm (6"x 1 1/2")



A9905 Dentil
152mm x 50mm (6"x 2")



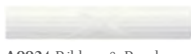
A9902 Rope
152mm x 40mm (6"x 1 1/2")



A9911 External Corner Trim
152mm x 30mm (6"x 1 1/4")



A9910 Internal Corner Trim
152mm x 30mm (6"x 1 1/4")



A9924 Ribbon & Reed
152mm x 28mm (6"x 1 1/8")



A9921 Sigma
152mm x 26mm (6"x 1")



A9927 Astragal
152mm x 21mm (6"x 3/4")



A9909 Omega
152mm x 12mm (6"x 1/2")



A9923 Scroll
152mm x 29mm (6"x 1 1/8")



A9004 Metro Tile
152mm x 75mm (6"x 3")
Finishing Piece also available



A9900 Albert
152mm x 40mm (6"x 1 1/2")



A9901 Victoria
152mm x 75mm (6"x 3")



A9906 Egg & Dart
152mm x 65mm (6"x 2 1/2")



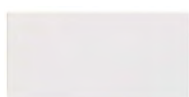
A9907 Wave
152mm x 60mm (6"x 2 3/8")



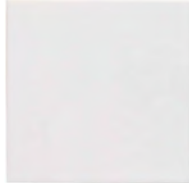
A9908 Adelaide
152mm x 75mm (6"x 3")



A9221 Rectangle
152mm x 25mm (6"x 1")



A9002 Half Field Tile
152mm x 75mm (6"x 3")



A9000 Field Tile
152mm x 152mm (6"x 6")



A9903 Skirting
152mm x 152mm (6"x 6")

COLONIAL WHITE



B9929 Plain Cornice
152mm x 75mm (6"x 3")



B9928 Hogarth
152mm x 38mm (6"x 1 1/2")



B9905 Dentil
152mm x 50mm (6"x 2")



B9902 Rope
152mm x 40mm (6"x 1 1/2")



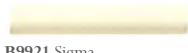
B9911 External Corner Trim
152mm x 30mm (6"x 1 1/4")



B9910 Internal Corner Trim
152mm x 30mm (6"x 1 1/4")



B9924 Ribbon & Reed
152mm x 28mm (6"x 1 1/8")



B9921 Sigma
152mm x 26mm (6"x 1")



B9927 Astragal
152mm x 21mm (6"x 3/4")



B9909 Omega
152mm x 12mm (6"x 1/2")



B9923 Scroll
152mm x 29mm (6"x 1 1/8")



B9004 Metro Tile
152mm x 75mm (6"x 3")
Finishing Piece also available



B9900 Albert
152mm x 40mm (6"x 1 1/2")



B9901 Victoria
152mm x 75mm (6"x 3")



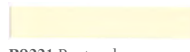
B9906 Egg & Dart
152mm x 65mm (6"x 2 1/2")



B9907 Wave
152mm x 60mm (6"x 2 3/8")



B9908 Adelaide
152mm x 75mm (6"x 3")



B9221 Rectangle
152mm x 25mm (6"x 1")



B9002 Half Field Tile
152mm x 75mm (6"x 3")



B9000 Field Tile
152mm x 152mm (6"x 6")



B9903 Skirting
152mm x 152mm (6"x 6")

IMPERIAL IVORY



C9929 Plain Cornice
152mm x 75mm (6"x 3")



C9928 Hogarth
152mm x 38mm (6"x 1 1/2")



C9905 Dentil
152mm x 50mm (6"x 2")



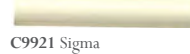
C9902 Rope
152mm x 40mm (6"x 1 1/2")



C9911 External Corner Trim
152mm x 30mm (6"x 1 1/4")



C9924 Ribbon & Reed
152mm x 28mm (6"x 1 1/8")



C9921 Sigma
152mm x 26mm (6"x 1")



C9927 Astragal
152mm x 21mm (6"x 3/4")



C9909 Omega
152mm x 12mm (6"x 1/2")



C9923 Scroll
152mm x 29mm (6"x 1 1/8")



C9002 Half Field Tile
152mm x 75mm (6"x 3")



C9000 Field Tile
152mm x 152mm (6"x 6")



C9903 Skirting
152mm x 152mm (6"x 6")

EXTERNAL CORNERS



Albert External Corner
A9900L or A9900R



Victoria External Corner
A9901L or A9901R



Skirting External Corner
A9903L or A9903R



Albert External Corner
B9900L or B9900R



Victoria External Corner
B9901L or B9901R



Skirting External Corner
B9903L or B9903R

External Corners

Available in left (L) and right (R) for a professional finish (in Brilliant White and Colonial White only).

See top image on page 69

COLOURS *and Trims*

REGENCY CREAM



S9929 Plain Cornice
152mm x 75mm (6"x 3")



S9928 Hogarth
152mm x 38mm (6"x 1 1/2")



S9905 Dentil
152mm x 50mm (6"x 2")



S9902 Rope
152mm x 40mm (6"x 1 1/2")



S9911 External Corner Trim
152mm x 30mm (6"x 1 1/4")



S9924 Ribbon & Reed
152mm x 28mm (6"x 1 1/8")



S9921 Sigma
152mm x 26mm (6"x 1")



S9927 Astragal
152mm x 21mm (6"x 3/4")



S9909 Omega
152mm x 12mm (6"x 1/2")



S9923 Scroll
152mm x 29mm (6"x 1 1/8")



S9900 Albert
152mm x 40mm (6"x 1 1/2")



S9901 Victoria
152mm x 75mm (6"x 3")



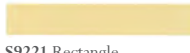
S9906 Egg & Dart
152mm x 65mm (6"x 2 1/2")



S9907 Wave
152mm x 60mm (6"x 2 3/8")



S9908 Adelaide
152mm x 75mm (6"x 3")



S9221 Rectangle
152mm x 25mm (6"x 1")



S9002 Half Field Tile
152mm x 75mm (6"x 3")



S9000 Field Tile
152mm x 152mm (6"x 6")



S9903 Skirting
152mm x 152mm (6"x 6")

ECRU



GIC9929 Plain Cornice
152mm x 75mm (6"x 3")



GIC9928 Hogarth
152mm x 38mm (6"x 1 1/2")



GIC9905 Dentil
152mm x 50mm (6"x 2")



GIC9902 Rope
152mm x 40mm (6"x 1 1/2")



GIC9911 External Corner Trim
152mm x 30mm (6"x 1 1/4")



GIC9924 Ribbon & Reed
152mm x 28mm (6"x 1 1/8")



GIC9921 Sigma
152mm x 26mm (6"x 1")



GIC9927 Astragal
152mm x 21mm (6"x 3/4")



GIC9909 Omega
152mm x 12mm (6"x 1/2")



GIC9923 Scroll
152mm x 29mm (6"x 1 1/8")



GIC9900 Albert
152mm x 40mm (6"x 1 1/2")



GIC9901 Victoria
152mm x 75mm (6"x 3")



GIC9906 Egg & Dart
152mm x 65mm (6"x 2 1/2")



GIC9907 Wave
152mm x 60mm (6"x 2 3/8")



GIC9908 Adelaide
152mm x 75mm (6"x 3")



GIC9221 Rectangle
152mm x 25mm (6"x 1")



GIC9002 Half Field Tile
152mm x 75mm (6"x 3")



GIC9000 Field Tile
152mm x 152mm (6"x 6")



GIC9903 Skirting
152mm x 152mm (6"x 6")

PALLADIAN BEIGE



GPB9929 Plain Cornice
152mm x 75mm (6"x 3")



GPB9928 Hogarth
152mm x 38mm (6"x 1 1/2")



GPB9905 Dentil
152mm x 50mm (6"x 2")



GPB9902 Rope
152mm x 40mm (6"x 1 1/2")



GPB9911 External Corner Trim
152mm x 30mm (6"x 1 1/4")



GPB9924 Ribbon & Reed
152mm x 28mm (6"x 1 1/8")



GPB9921 Sigma
152mm x 26mm (6"x 1")



GPB9927 Astragal
152mm x 21mm (6"x 3/4")



GPB9909 Omega
152mm x 12mm (6"x 1/2")



GPB9923 Scroll
152mm x 29mm (6"x 1 1/8")



GPB9004 Metro Tile
150mm x 75mm (6"x 3")
Finishing Piece also available



GPB9900 Albert
152mm x 40mm (6"x 1 1/2")



GPB9901 Victoria
152mm x 75mm (6"x 3")



GPB9906 Egg & Dart
152mm x 65mm (6"x 2 1/2")



GPB9907 Wave
152mm x 60mm (6"x 2 3/8")



GPB9908 Adelaide
152mm x 75mm (6"x 3")



GPB9221 Rectangle
152mm x 25mm (6"x 1")



GPB9002 Half Field Tile
152mm x 75mm (6"x 3")



GPB9000 Field Tile
152mm x 152mm (6"x 6")



GPB9903 Skirting
152mm x 152mm (6"x 6")

Important Note

Due to their shape Albert and Victoria mouldings are not recommended for use in areas subject to wall movement. It is also imperative that care is taken when grouting these mouldings to ensure moisture cannot get into the back of them as this may cause the moulding to crack.

COLOURS *and Trims*

BURGUNDY



F9929 Plain Cornice
152mm x 75mm (6"x 3")



F9928 Hogarth
152mm x 38mm (6"x 1 1/2")



F9905 Dentil
152mm x 50mm (6"x 2")



F9902 Rope
152mm x 40mm (6"x 1 1/2")



F9911 External Corner Trim
152mm x 30mm (6"x 1 1/4")



F9924 Ribbon & Reed
152mm x 28mm (6"x 1 1/8")



F9921 Sigma
152mm x 26mm (6"x 1")



F9927 Astragal
152mm x 21mm (6"x 3/4")



F9909 Omega
152mm x 12mm (6"x 1/2")



F9923 Scroll
152mm x 29mm (6"x 1 1/8")



F9004 Metro Tile
152mm x 75mm (6"x 3")
Finishing Piece also available



F9900 Albert
152mm x 40mm (6"x 1 1/2")



F9901 Victoria
152mm x 75mm (6"x 3")



F9906 Egg & Dart
152mm x 65mm (6"x 2 1/2")



F9907 Wave
152mm x 60mm (6"x 2 3/8")



F9908 Adelaide
152mm x 75mm (6"x 3")



F9221 Rectangle
152mm x 25mm (6"x 1")



F9002 Half Field Tile
152mm x 75mm (6"x 3")



F9000 Field Tile
152mm x 152mm (6"x 6")



F9903 Skirting
152mm x 152mm (6"x 6")

SEPIA



GJT9929 Plain Cornice
152mm x 75mm (6"x 3")



GJT9928 Hogarth
152mm x 38mm (6"x 1 1/2")



GJT9905 Dentil
152mm x 50mm (6"x 2")



GJT9902 Rope
152mm x 40mm (6"x 1 1/2")



GJT9911 External Corner Trim
152mm x 30mm (6"x 1 1/4")



GJT9924 Ribbon & Reed
152mm x 28mm (6"x 1 1/8")



GJT9921 Sigma
152mm x 26mm (6"x 1")



GJT9927 Astragal
152mm x 21mm (6"x 3/4")



GJT9909 Omega
152mm x 12mm (6"x 1/2")



GJT9923 Scroll
152mm x 29mm (6"x 1 1/8")



GJT9000 Field Tile
152mm x 152mm (6"x 6")



GJT9903 Skirting
152mm x 152mm (6"x 6")



GJT9900 Albert
152mm x 40mm (6"x 1 1/2")



GJT9901 Victoria
152mm x 75mm (6"x 3")



GJT9906 Egg & Dart
152mm x 65mm (6"x 2 1/2")



GJT9907 Wave
152mm x 60mm (6"x 2 3/8")



GJT9908 Adelaide
152mm x 75mm (6"x 3")



GJT9221 Rectangle
152mm x 25mm (6"x 1")



GJT9002 Half Field Tile
152mm x 75mm (6"x 3")



GJT9000 Field Tile
152mm x 152mm (6"x 6")



GJT9903 Skirting
152mm x 152mm (6"x 6")

SUMMER YELLOW



GSY9929 Plain Cornice
152mm x 75mm (6"x 3")



GSY9928 Hogarth
152mm x 38mm (6"x 1 1/2")



GSY9905 Dentil
152mm x 50mm (6"x 2")



GSY9902 Rope
152mm x 40mm (6"x 1 1/2")



GSY9911 External Corner Trim
152mm x 30mm (6"x 1 1/4")



GSY9924 Ribbon & Reed
152mm x 28mm (6"x 1 1/8")



GSY9921 Sigma
152mm x 26mm (6"x 1")



GSY9927 Astragal
152mm x 21mm (6"x 3/4")



GSY9909 Omega
152mm x 12mm (6"x 1/2")



GSY9923 Scroll
152mm x 29mm (6"x 1 1/8")



GSY9000 Field Tile
152mm x 152mm (6"x 6")



GSY9903 Skirting
152mm x 152mm (6"x 6")



GSY9900 Albert
152mm x 40mm (6"x 1 1/2")



GSY9901 Victoria
152mm x 75mm (6"x 3")



GSY9906 Egg & Dart
152mm x 65mm (6"x 2 1/2")



GSY9907 Wave
152mm x 60mm (6"x 2 3/8")



GSY9908 Adelaide
152mm x 75mm (6"x 3")



GSY9221 Rectangle
152mm x 25mm (6"x 1")



GSY9002 Half Field Tile
152mm x 75mm (6"x 3")



GSY9000 Field Tile
152mm x 152mm (6"x 6")



GSY9903 Skirting
152mm x 152mm (6"x 6")

Important Note

Due to their shape Albert and Victoria mouldings are not recommended for use in areas subject to wall movement. It is also imperative that care is taken when grouting these mouldings to ensure moisture cannot get into the back of them as this may cause the moulding to crack.

COLOURS *and Trims*

PALM GREEN



GPG9929 Plain Cornice
152mm x 75mm (6"x 3")



GPG9928 Hogarth
152mm x 38mm (6"x 1 1/2")



GPG9905 Dentil
152mm x 50mm (6"x 2")



GPG9902 Rope
152mm x 40mm (6"x 1 1/2")



GPG9911 External Corner Trim
152mm x 30mm (6"x 1 1/4")



GPG9924 Ribbon & Reed
152mm x 28mm (6"x 1 1/8")



GPG9921 Sigma
152mm x 26mm (6"x 1")



GPG9927 Astragal
152mm x 21mm (6"x 3/4")



GPG9909 Omega
152mm x 12mm (6"x 1/2")



GPG9923 Scroll
152mm x 29mm (6"x 1 1/8")



GPG9900 Albert
152mm x 40mm (6"x 1 1/2")



GPG9901 Victoria
152mm x 75mm (6"x 3")



GPG9906 Egg & Dart
152mm x 65mm (6"x 2 1/2")



GPG9907 Wave
152mm x 60mm (6"x 2 3/8")



GPG9908 Adelaide
152mm x 75mm (6"x 3")



GPG9221 Rectangle
152mm x 25mm (6"x 1")



GPG9002 Half Field Tile
152mm x 75mm (6"x 3")



GPG9000 Field Tile
152mm x 152mm (6"x 6")



GPG9903 Skirting
152mm x 152mm (6"x 6")

PAVILLION GREEN



GPV9929 Plain Cornice
152mm x 75mm (6"x 3")



GPV9928 Hogarth
152mm x 38mm (6"x 1 1/2")



GPV9905 Dentil
152mm x 50mm (6"x 2")



GPV9902 Rope
152mm x 40mm (6"x 1 1/2")



GPV9911 External Corner Trim
152mm x 30mm (6"x 1 1/4")



GPV9924 Ribbon & Reed
152mm x 28mm (6"x 1 1/8")



GPV9921 Sigma
152mm x 26mm (6"x 1")



GPV9927 Astragal
152mm x 21mm (6"x 3/4")



GPV9909 Omega
152mm x 12mm (6"x 1/2")



GPV9923 Scroll
152mm x 29mm (6"x 1 1/8")



GPV9000 Field Tile
152mm x 152mm (6"x 6")



GPV9903 Skirting
152mm x 152mm (6"x 6")



GPV9900 Albert
152mm x 40mm (6"x 1 1/2")



GPV9901 Victoria
152mm x 75mm (6"x 3")



GPV9906 Egg & Dart
152mm x 65mm (6"x 2 1/2")



GPV9907 Wave
152mm x 60mm (6"x 2 3/8")



GPV9908 Adelaide
152mm x 75mm (6"x 3")



GPV9221 Rectangle
152mm x 25mm (6"x 1")



GPV9002 Half Field Tile
152mm x 75mm (6"x 3")



GPV9000 Field Tile
152mm x 152mm (6"x 6")



GPV9903 Skirting
152mm x 152mm (6"x 6")

JADE BREEZE



GJB9929 Plain Cornice
152mm x 75mm (6"x 3")



GJB9928 Hogarth
152mm x 38mm (6"x 1 1/2")



GJB9905 Dentil
152mm x 50mm (6"x 2")



GJB9902 Rope
152mm x 40mm (6"x 1 1/2")



GJB9911 External Corner Trim
152mm x 30mm (6"x 1 1/4")



GJB9924 Ribbon & Reed
152mm x 28mm (6"x 1 1/8")



GJB9921 Sigma
152mm x 26mm (6"x 1")



GJB9927 Astragal
152mm x 21mm (6"x 3/4")



GJB9909 Omega
152mm x 12mm (6"x 1/2")



GJB9923 Scroll
152mm x 29mm (6"x 1 1/8")



GJB9004 Metro Tile
152mm x 75mm (6"x 3")
Finishing Piece also available



GJB9900 Albert
152mm x 40mm (6"x 1 1/2")



GJB9901 Victoria
152mm x 75mm (6"x 3")



GJB9906 Egg & Dart
152mm x 65mm (6"x 2 1/2")



GJB9907 Wave
152mm x 60mm (6"x 2 3/8")



GJB9908 Adelaide
152mm x 75mm (6"x 3")



GJB9221 Rectangle
152mm x 25mm (6"x 1")



GJB9002 Half Field Tile
152mm x 75mm (6"x 3")



GJB9000 Field Tile
152mm x 152mm (6"x 6")



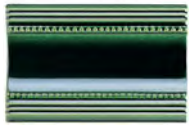
GJB9903 Skirting
152mm x 152mm (6"x 6")

Important Note

Due to their shape Albert and Victoria mouldings are not recommended for use in areas subject to wall movement. It is also imperative that care is taken when grouting these mouldings to ensure moisture cannot get into the back of them as this may cause the moulding to crack.

COLOURS *and Trims*

VICTORIAN GREEN



E9929 Plain Cornice
152mm x 75mm (6"x 3")



E9928 Hogarth
152mm x 38mm (6"x 1 1/2")



E9905 Dentil
152mm x 50mm (6"x 2")



E9902 Rope
152mm x 40mm (6"x 1 1/2")



E9911 External Corner Trim
152mm x 30mm (6"x 1 1/4")



E9924 Ribbon & Reed
152mm x 28mm (6"x 1 1/8")



E9921 Sigma
152mm x 26mm (6"x 1")



E9927 Astragal
152mm x 21mm (6"x 3/4")



E9909 Omega
152mm x 12mm (6"x 1/2")



E9923 Scroll
152mm x 29mm (6"x 1 1/8")



E9900 Albert
152mm x 40mm (6"x 1 1/2")



E9901 Victoria
152mm x 75mm (6"x 3")



E9906 Egg & Dart
152mm x 65mm (6"x 2 1/2")



E9907 Wave
152mm x 60mm (6"x 2 3/8")



E9908 Adelaide
152mm x 75mm (6"x 3")



E9221 Rectangle
152mm x 25mm (6"x 1")



E9002 Half Field Tile
152mm x 75mm (6"x 3")



E9000 Field Tile
152mm x 152mm (6"x 6")



E9903 Skirting
152mm x 152mm (6"x 6")

VICARAGE GREEN



GVG9929 Plain Cornice
152mm x 75mm (6"x 3")



GVG9928 Hogarth
152mm x 38mm (6"x 1 1/2")



GVG9905 Dentil
152mm x 50mm (6"x 2")



GVG9902 Rope
152mm x 40mm (6"x 1 1/2")



GVG9911 External Corner Trim
152mm x 30mm (6"x 1 1/4")



GVG9924 Ribbon & Reed
152mm x 28mm (6"x 1 1/8")



GVG9921 Sigma
152mm x 26mm (6"x 1")



GVG9927 Astragal
152mm x 21mm (6"x 3/4")



GVG9909 Omega
152mm x 12mm (6"x 1/2")



GVG9923 Scroll
152mm x 29mm (6"x 1 1/8")



GVG9900 Albert
152mm x 40mm (6"x 1 1/2")



GVG9901 Victoria
152mm x 75mm (6"x 3")



GVG9906 Egg & Dart
152mm x 65mm (6"x 2 1/2")



GVG9907 Wave
152mm x 60mm (6"x 2 3/8")



GVG9908 Adelaide
152mm x 75mm (6"x 3")



GVG9221 Rectangle
152mm x 25mm (6"x 1")



GVG9002 Half Field Tile
152mm x 75mm (6"x 3")



GVG9000 Field Tile
152mm x 152mm (6"x 6")



GVG9903 Skirting
152mm x 152mm (6"x 6")

AQUA SOURCE



GAQ9929 Plain Cornice
152mm x 75mm (6"x 3")



GAQ9928 Hogarth
152mm x 38mm (6"x 1 1/2")



GAQ9905 Dentil
152mm x 50mm (6"x 2")



GAQ9902 Rope
152mm x 40mm (6"x 1 1/2")



GAQ9911 External Corner Trim
152mm x 30mm (6"x 1 1/4")



GAQ9924 Ribbon & Reed
152mm x 28mm (6"x 1 1/8")



GAQ9921 Sigma
152mm x 26mm (6"x 1")



GAQ9927 Astragal
152mm x 21mm (6"x 3/4")



GAQ9909 Omega
152mm x 12mm (6"x 1/2")



GAQ9923 Scroll
152mm x 29mm (6"x 1 1/8")



GAQ9900 Albert
152mm x 40mm (6"x 1 1/2")



GAQ9901 Victoria
152mm x 75mm (6"x 3")



GAQ9906 Egg & Dart
152mm x 65mm (6"x 2 1/2")



GAQ9907 Wave
152mm x 60mm (6"x 2 3/8")



GAQ9908 Adelaide
152mm x 75mm (6"x 3")



GAQ9221 Rectangle
152mm x 25mm (6"x 1")



GAQ9002 Half Field Tile
152mm x 75mm (6"x 3")



GAQ9000 Field Tile
152mm x 152mm (6"x 6")



GAQ9903 Skirting
152mm x 152mm (6"x 6")

Victorian Green tiles - special warning

Victorian Green tiles have a copper-based glaze which is prone to discolouration by very mild acids often found in the home. To avoid such discolouration they should be cleaned only with pure water and should always be wiped dry immediately after cleaning. These tiles should never be used in wet areas such as showers, bath surrounds or basin splashbacks.

COLOURS *and Trims*

BAROQUE BLUE



GBB9929 Plain Cornice
152mm x 75mm (6"x 3")



GBB9928 Hogarth
152mm x 38mm (6"x 1 1/2")



GBB9905 Dentil
152mm x 50mm (6"x 2")



GBB9902 Rope
152mm x 40mm (6"x 1 1/2")



GBB9911 External Corner Trim
152mm x 30mm (6"x 1 1/4")



GBB9924 Ribbon & Reed
152mm x 28mm (6"x 1 1/8")



GBB9921 Sigma
152mm x 26mm (6"x 1")



GBB9927 Astragal
152mm x 21mm (6"x 3/4")



GBB9909 Omega
152mm x 12mm (6"x 1/2")



GBB9923 Scroll
152mm x 29mm (6"x 1 1/8")



GBB9900 Albert
152mm x 40mm (6"x 1 1/2")



GBB9901 Victoria
152mm x 75mm (6"x 3")



GBB9906 Egg & Dart
152mm x 65mm (6"x 2 1/2")



GBB9907 Wave
152mm x 60mm (6"x 2 3/8")



GBB9908 Adelaide
152mm x 75mm (6"x 3")



GBB9922 Rectangle
152mm x 25mm (6"x 1")



GBB9902 Half Field Tile
152mm x 75mm (6"x 3")



GBB9900 Field Tile
152mm x 152mm (6"x 6")



GBB9903 Skirting
152mm x 152mm (6"x 6")

WINDSOR BLUE



GWB9929 Plain Cornice
152mm x 75mm (6"x 3")



GWB9928 Hogarth
152mm x 38mm (6"x 1 1/2")



GWB9905 Dentil
152mm x 50mm (6"x 2")



GWB9902 Rope
152mm x 40mm (6"x 1 1/2")



GWB9911 External Corner Trim
152mm x 30mm (6"x 1 1/4")



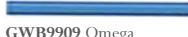
GWB9924 Ribbon & Reed
152mm x 28mm (6"x 1 1/8")



GWB9921 Sigma
152mm x 26mm (6"x 1")



GWB9927 Astragal
152mm x 21mm (6"x 3/4")



GWB9909 Omega
152mm x 12mm (6"x 1/2")



GWB9923 Scroll
152mm x 29mm (6"x 1 1/8")



GWB9904 Metro Tile
152mm x 75mm (6"x 3")
Finishing Piece also available



GWB9900 Albert
152mm x 40mm (6"x 1 1/2")



GWB9901 Victoria
152mm x 75mm (6"x 3")



GWB9906 Egg & Dart
152mm x 65mm (6"x 2 1/2")



GWB9907 Wave
152mm x 60mm (6"x 2 3/8")



GWB9908 Adelaide
152mm x 75mm (6"x 3")



GWB9922 Rectangle
152mm x 25mm (6"x 1")



GWB9902 Half Field Tile
152mm x 75mm (6"x 3")



GWB9900 Field Tile
152mm x 152mm (6"x 6")



GWB9903 Skirting
152mm x 152mm (6"x 6")

OXFORD BLUE



GXB9929 Plain Cornice
152mm x 75mm (6"x 3")



GXB9928 Hogarth
152mm x 38mm (6"x 1 1/2")



GXB9905 Dentil
152mm x 50mm (6"x 2")



GXB9902 Rope
152mm x 40mm (6"x 1 1/2")



GXB9911 External Corner Trim
152mm x 30mm (6"x 1 1/4")



GXB9924 Ribbon & Reed
152mm x 28mm (6"x 1 1/8")



GXB9921 Sigma
152mm x 26mm (6"x 1")



GXB9927 Astragal
152mm x 21mm (6"x 3/4")



GXB9909 Omega
152mm x 12mm (6"x 1/2")



GXB9923 Scroll
152mm x 29mm (6"x 1 1/8")



GXB9900 Albert
152mm x 40mm (6"x 1 1/2")



GXB9901 Victoria
152mm x 75mm (6"x 3")



GXB9906 Egg & Dart
152mm x 65mm (6"x 2 1/2")



GXB9907 Wave
152mm x 60mm (6"x 2 3/8")



GXB9908 Adelaide
152mm x 75mm (6"x 3")



GXB9922 Rectangle
152mm x 25mm (6"x 1")



GXB9902 Half Field Tile
152mm x 75mm (6"x 3")



GXB9900 Field Tile
152mm x 152mm (6"x 6")



GXB9903 Skirting
152mm x 152mm (6"x 6")

Important Note

Due to their shape Albert and Victoria mouldings are not recommended for use in areas subject to wall movement. It is also imperative that care is taken when grouting these mouldings to ensure moisture cannot get into the back of them as this may cause the moulding to crack.

COLOURS *and Trims*

ROYAL BLUE



G9929 Plain Cornice
152mm x 75mm (6"x 3")



G9928 Hogarth
152mm x 38mm (6"x 1 1/2")



G9905 Dentil
152mm x 50mm (6"x 2")



G9902 Rope
152mm x 40mm (6"x 1 1/2")



G9911 External Corner Trim
152mm x 30mm (6"x 1 1/4")



G9924 Ribbon & Reed
152mm x 28mm (6"x 1 1/8")



G9921 Sigma
152mm x 26mm (6"x 1")



G9927 Astragal
152mm x 21mm (6"x 3/4")



G9909 Omega
152mm x 12mm (6"x 1/2")



G9923 Scroll
152mm x 29mm (6"x 1 1/8")



G9004 Metro Tile
152mm x 75mm (6"x 3")
Finishing Piece also available



G9900 Albert
152mm x 40mm (6"x 1 1/2")



G9901 Victoria
152mm x 75mm (6"x 3")



G9906 Egg & Dart
152mm x 65mm (6"x 2 1/2")



G9907 Wave
152mm x 60mm (6"x 2 3/8")



G9908 Adelaide
152mm x 75mm (6"x 3")



G9922 Rectangle
152mm x 25mm (6"x 1")



G9002 Half Field Tile
152mm x 75mm (6"x 3")

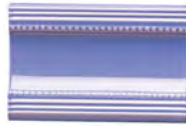


G9000 Field Tile
152mm x 152mm (6"x 6")



G9903 Skirting
152mm x 152mm (6"x 6")

LILAC MIST



GLM9900 Albert
152mm x 40mm (6"x 1 1/2")



GLM9929 Plain Cornice
152mm x 75mm (6"x 3")



GLM9928 Hogarth
152mm x 38mm (6"x 1 1/2")



GLM9905 Dentil
152mm x 50mm (6"x 2")



GLM9902 Rope
152mm x 40mm (6"x 1 1/2")



GLM9911 External Corner Trim
152mm x 30mm (6"x 1 1/4")



GLM9924 Ribbon & Reed
152mm x 28mm (6"x 1 1/8")



GLM9921 Sigma
152mm x 26mm (6"x 1")



GLM9927 Astragal
152mm x 21mm (6"x 3/4")



GLM9909 Omega
152mm x 12mm (6"x 1/2")



GLM9923 Scroll
152mm x 29mm (6"x 1 1/8")



GLM9000 Field Tile
152mm x 152mm (6"x 6")



GLM9903 Skirting
152mm x 152mm (6"x 6")

LONDON STONE



GLS9900 Albert
152mm x 40mm (6"x 1 1/2")



GLS9929 Plain Cornice
152mm x 75mm (6"x 3")



GLS9928 Hogarth
152mm x 38mm (6"x 1 1/2")



GLS9905 Dentil
152mm x 50mm (6"x 2")



GLS9902 Rope
152mm x 40mm (6"x 1 1/2")



GLS9911 External Corner Trim
152mm x 30mm (6"x 1 1/4")



GLS9924 Ribbon & Reed
152mm x 28mm (6"x 1 1/8")



GLS9921 Sigma
152mm x 26mm (6"x 1")



GLS9927 Astragal
152mm x 21mm (6"x 3/4")



GLS9909 Omega
152mm x 12mm (6"x 1/2")



GLS9923 Scroll
152mm x 29mm (6"x 1 1/8")



GLS9000 Field Tile
152mm x 152mm (6"x 6")



GLS9903 Skirting
152mm x 152mm (6"x 6")

Important Note

Due to their shape Albert and Victoria mouldings are not recommended for use in areas subject to wall movement. It is also imperative that care is taken when grouting these mouldings to ensure moisture cannot get into the back of them as this may cause the moulding to crack.

COLOURS *and Trims*

CHARCOAL GREY



GCH9929 Plain Cornice
152mm x 75mm (6"x 3")



GCH9928 Hogarth
152mm x 38mm (6"x 1 1/2")



GCH9905 Dentil
152mm x 50mm (6"x 2")



GCH9902 Rope
152mm x 40mm (6"x 1 1/2")



GCH9911
External Corner Trim
152mm x 30mm (6"x 1 1/4")



GCH9924 Ribbon & Reed
152mm x 28mm (6"x 1 1/8")



GCH9921 Sigma
152mm x 26mm (6"x 1")



GCH9927 Astragal
152mm x 21mm (6"x 3/4")



GCH9909 Omega
152mm x 12mm (6"x 1/2")



GCH9923 Scroll
152mm x 29mm (6"x 1 1/8")



GCH9900 Albert
152mm x 40mm (6"x 1 1/2")



GCH9901 Victoria
152mm x 75mm (6"x 3")



GCH9906 Egg & Dart
152mm x 65mm (6"x 2 1/2")



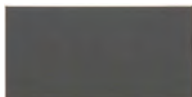
GCH9907 Wave
152mm x 60mm (6"x 2 3/8")



GCH9908 Adelaide
152mm x 75mm (6"x 3")



GCH9221 Rectangle
152mm x 25mm (6"x 1")



GCH9002 Half Field Tile
152mm x 75mm (6"x 3")



GCH9000 Field Tile
152mm x 152mm (6"x 6")



GCH9903 Skirting
152mm x 152mm (6"x 6")

JET BLACK



N9929 Plain Cornice
152mm x 75mm (6"x 3")



N9928 Hogarth
152mm x 38mm (6"x 1 1/2")



N9905 Dentil
152mm x 50mm (6"x 2")



N9902 Rope
152mm x 40mm (6"x 1 1/2")



N9911 External Corner Trim
152mm x 30mm (6"x 1 1/4")



N9924 Ribbon & Reed
152mm x 28mm (6"x 1 1/8")



N9921 Sigma
152mm x 26mm (6"x 1")



N9927 Astragal
152mm x 21mm (6"x 3/4")



N9909 Omega
152mm x 12mm (6"x 1/2")



N9923 Scroll
152mm x 29mm (6"x 1 1/8")



N9004 Metro Tile
152mm x 75mm (6"x 3")
Finishing Piece also available



N9900 Albert
152mm x 40mm (6"x 1 1/2")



N9901 Victoria
152mm x 75mm (6"x 3")



N9906 Egg & Dart
152mm x 65mm (6"x 2 1/2")



N9907 Wave
152mm x 60mm (6"x 2 3/8")



N9908 Adelaide
152mm x 75mm (6"x 3")



N9221 Rectangle
152mm x 25mm (6"x 1")



N9002 Half Field Tile
152mm x 75mm (6"x 3")



N9000 Field Tile
152mm x 152mm (6"x 6")



N9903 Skirting
152mm x 152mm (6"x 6")

PLATINUM



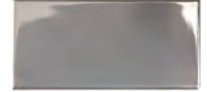
PLAT9921 Sigma
152mm x 26mm (6" x 1")



PLAT9903 Skirting
152mm x 152mm (6"x 6")



PLAT9909 Omega
152mm x 12mm (6" x 1/2")



PLAT9002 Half Field Tile
152mm x 75mm (6"x 3")

GOLD



GOLD9921 Sigma
152mm x 26mm (6" x 1")



GOLD9903 Skirting
152mm x 152mm (6"x 6")



GOLD9909 Omega
152mm x 12mm (6" x 1/2")



GOLD9002 Half Field Tile
152mm x 75mm (6"x 3")

BRONZE



GNE9927 Astragal
152mm x 21mm (6" x 3/4")



GNE9923 Scroll
152mm x 29mm (6" x 1 1/8")



GNE9907 Wave
152mm x 60mm (6" x 2 3/8")



GNE9906 Egg & Dart
152mm x 65mm (6" x 2 1/2")



GNE9909 Omega
152mm x 12mm (6" x 1/2")



GNE9902 Rope
152mm x 40mm (6" x 1 1/2")



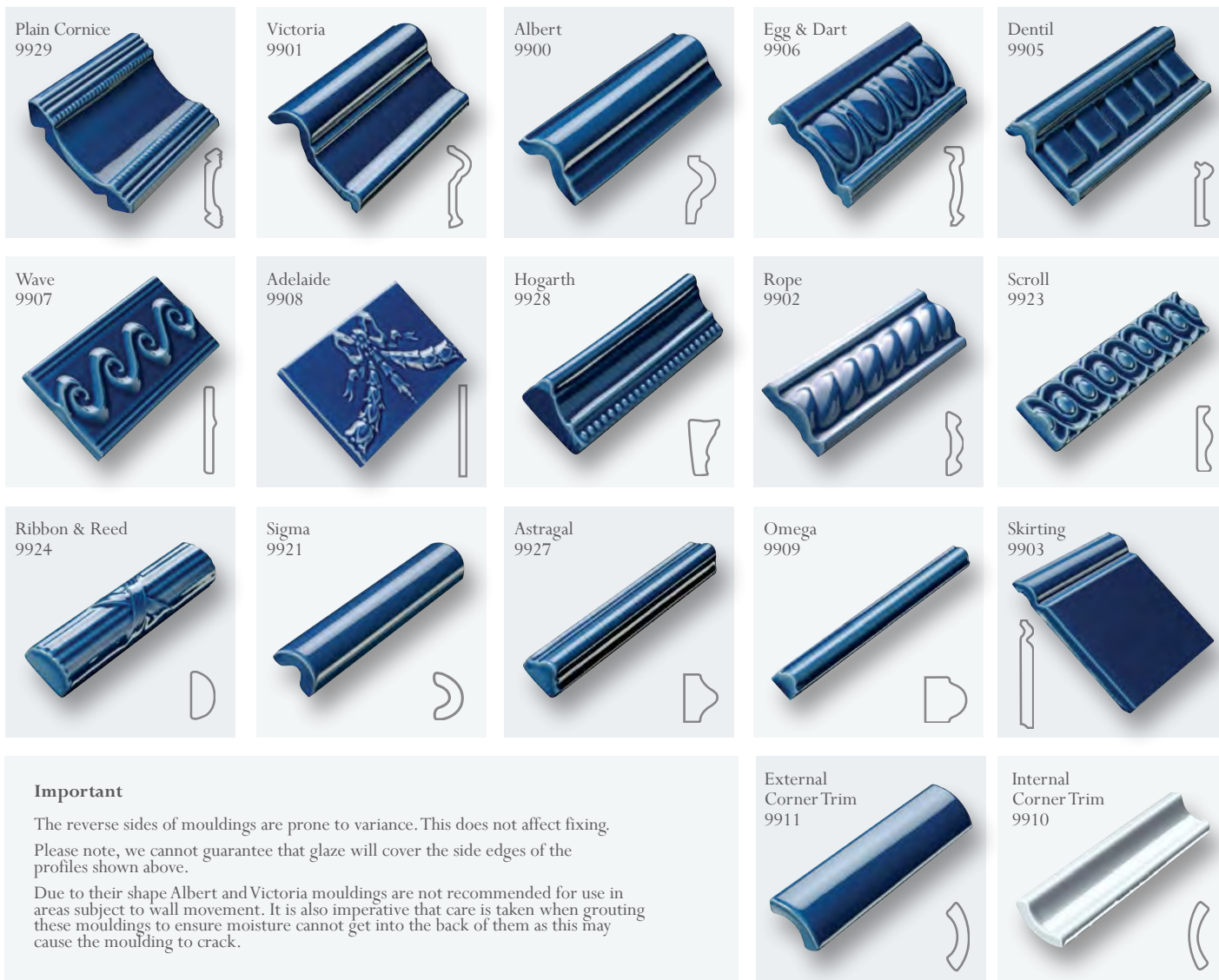
GNE9905 Dentil
152mm x 50mm (6" x 2")

Important Note

Due to their shape Albert and Victoria mouldings are not recommended for use in areas subject to wall movement. It is also imperative that care is taken when grouting these mouldings to ensure moisture cannot get into the back of them as this may cause the moulding to crack.

PROFILES

Our wide choice of special mouldings and borders enables you to achieve an attractive and professional finish.
The detailed relief (as illustrated below) adds an eye-catching feature to any tiled area.



Important

The reverse sides of mouldings are prone to variance. This does not affect fixing.
Please note, we cannot guarantee that glaze will cover the side edges of the profiles shown above.
Due to their shape Albert and Victoria mouldings are not recommended for use in areas subject to wall movement. It is also imperative that care is taken when grouting these mouldings to ensure moisture cannot get into the back of them as this may cause the moulding to crack.

*Brilliant White & Colonial White only

ROUNDED EDGE TILES

(REL or Bullnose and RES)

To ensure a perfect finish to tiled areas we have created these half tiles with one rounded edge (either long edge or short edge), ideal for use on window sills, counter tops and any edge requiring a smart finish.
9005 REL Tile (Long Edge) 152mm x 75mm (6" x 3")
9008 RES Tile (Short Edge)* 152mm x 75mm (6" x 3")
When ordering please prefix the REL code number (9005) with the relevant colour code letter e.g. E9005 Victorian Green REL tile.
*RES (9008) only available in Brilliant White or Colonial White.

Carreaux aux bords arrondis

Pour garantir une finition parfaite, nous avons conçu ces demi-carreaux avec un bord arrondi (bord long ou bord court), idéal pour les seuils de fenêtres, les plans de travail et tous les rebords où une finition élégante est nécessaire.
Carreau 9005 REL (Bord Long) 152mm x 75mm
Carreau 9008 RES (Bord Court) 152mm x 75mm
Lorsque vous passez commande, veuillez faire précéder le code REL (9005) de la lettre du code couleur désiré, par ex. Carreau E9005 Victorian Green REL.
*RES (9008) disponible uniquement en Brilliant White ou Colonial White.

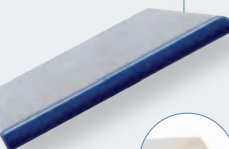
Abgerundete Kantenfliesen

Zur perfekten Einfassung von gefliesten Bereichen haben wir diese Halbfliesen mit einer abgerundeten Kante (längere oder kürzere Kante) entwickelt. Sie eignen sich ideal für die Verwendung an Fensterbänken, Arbeitsflächen und allen Kanten, die eine feine Einfassung benötigen.
9005 REL Fliese (Längere Kante) 152mm x 75mm
9008 RES Fliese (Kürzere Kante)* 152mm x 75mm
Bitte geben Sie bei Ihrer Bestellung vor der Codenummer REL (9005) den entsprechenden Farbcode-Buchstaben an, wie z. B. E9005 Victorian Green REL-Fliese.
*RES (9008) ist nur in den Farben Brilliant White oder Colonial White erhältlich.

Afgeronde randtegels

Voor de perfecte afwerking van tegeloppervlakken hebben we halve tegels met een afgeronde zijde (lange of korte zijde) ontwikkeld. Ideaal voor vensterbanken, aanrechten en alle randen die netjes moeten worden afgewerkt.
9005 REL Tile (lange zijde afgerond) 152mm x 75mm
9008 RES Tile (korte zijde afgerond)* 152mm x 75mm
Zet bij uw bestelling de betreffende kleurcodeletter voor het REL-codenummer (9005), bijvoorbeeld E9005 Victorian Green REL.
*RES (9008) alleen verkrijgbaar in Brilliant White en Colonial White.

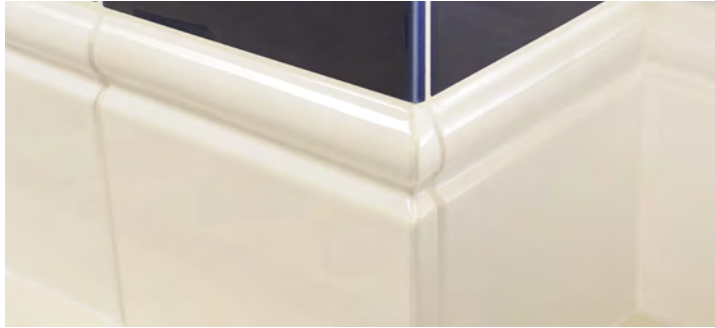
Rounded Edge
Available in all colours



Field Tile

Field tile thickness
7mm (1/4")





EXTERNAL CORNERS

VICTORIA, ALBERT AND SKIRTING

Available in left (L) and right (R) for a professional finish (in Brilliant White and Colonial White only). NB: Due to their shape, Albert and Victoria mouldings are not recommended for use in areas subject to wall movement. It is also imperative that care is taken when grouting these mouldings to ensure moisture cannot get into the back of them as this may cause the moulding to crack.

Angles externes

Disponible en gauche (L) et droit (R) pour une finition professionnelle (en Brilliant White ou Colonial White seulement). A cause de leur forme, les moulures Albert et Victoria ne sont pas recommandées pour une utilisation dans des emplacements où les parois sont susceptibles de bouger. Il est aussi impératif, lors du jointement de ces moulures, de s'assurer que l'humidité ne pourra s'infiltrer par derrière, sinon les moulures risquent de se lézarder au fil du temps.

Außenecken

Erhältlich in links (L) und rechts (R) für einen professionellen Abschluss (nur in Brilliant White und Colonial White). Aufgrund ihrer Form ist es nicht empfehlenswert, die Einfassungen Albert und Victoria in Bereichen mit Wandbewegung anzubringen. Außerdem ist beim Ausfügen dieser Einfassungen Vorsicht geboten, um sicherzustellen, dass keine Feuchtigkeit zurück in die Einfassung gelangt, da sie dadurch platzen kann.

Buitenhoecken

Verkrijgbaar in links (L) en rechts (R) voor een professionele afwerking (alleen verkrijgbaar in Brilliant White en Colonial White). Vanwege hun vorm zijn de profielen Albert en Victoria niet aanbevolen voor gebruik op muuroppervlakken met speling. Deze profielen moeten ook beslist zorgvuldig worden gevoegd om ervoor te zorgen dat er geen water achter kan komen, waardoor de profielen zouden kunnen barsten.



TL0113 Angle Block



45° ANGLE BLOCK

TL0113 45° Angle Block 90mm/3½"

This handy 45° Angle Block is invaluable for cutting the internal and external 45° angle corners of the Plain Cornice moulding (code 9929), thus ensuring a professional finish. It needs to be used with an electric tile cutting machine with a minimum cutting depth of 75mm, or a carbide tile saw and mitre block (the Cornice moulding sits on top of the angle block and is placed inside the mitre block, then cut with the carbide tile saw). Please note that, as the angle block is made from Plaster of Paris it is water soluble and likely to only last for one or two installations. Always seek professional advice when using cutting equipment. For more details refer to the Fixing Guide www.originalstyle.com/fixing.html

TL0113 Bloc d'angle 45° 90mm

Ce bloc d'angle pratique s'avère indispensable pour découper les coins d'angles internes et externes à 45° des moulures Plain Cornice (code 9929), garantissant ainsi une finition professionnelle. Il doit être utilisé avec un coupe-carreaux électrique d'une profondeur minimum de coupe de 75 mm, ou une scie à carreaux au carbure et une boîte à onglet (placez les moulures Cornice sur le bloc d'angle à l'intérieur de la boîte à onglet, puis découpez avec la scie à carreaux au carbure). Veuillez noter que, comme le bloc d'angle est en plâtre de Paris, il est soluble dans l'eau et ne vous servira que pour une ou deux installations. Consultez toujours l'avis d'un professionnel lorsque vous utilisez du matériel de découpage. Pour de plus amples informations, veuillez vous reporter au Guide d'Installation sur www.originalstyle.com/fixing.html

TL0113 45° Winkelblock 90mm

Dieser handliche Winkelblock ist von unschätzbarem Wert, um beim Schneiden von 45°-Innen- und Außenecken für die Einfassung Plain Cornice (Code 9929) einen professionellen Abschluss zu gewährleisten. Zur Verwendung ist eine elektrische Fliesenschneidemaschine mit einer Mindestschneidetiefe von 77 mm oder eine Karbid-Fliesensäge mit Gehrungsblok nötig (der Cornice-Randleiste sitzt auf dem Winkelblock und wird in dem Gehrungsblok platziert und anschließend mit der Karbid-Fliesensäge geschnitten). Bitte beachten Sie, dass der Winkelblock, da er aus Gipsmörtel besteht, wasserlöslich und wahrscheinlich nur für eine oder zwei Installationen verwendbar ist. Fragen Sie stets einen Fachmann, wenn Sie Schneidinstrumente verwenden. Weitere Informationen finden Sie in der Installationsanweisung unter www.originalstyle.com/fixing.html

TL0113 45° Angle Block 90mm

Dit handige hoekblok is van onschatbare waarde bij het zagen van binnen- en buitenhoeken van 45° voor Plain Cornice-randen (code 9929) en zorgt voor een professionele afwerking. Het blok moet worden gebruikt in combinatie met een elektrische tegelsnijmachine met een minimale zaagdiepte van 75 mm of een hardmetalen tegelzaag en een verstekbak. (De lijst wordt geplaatst op het hoekblok dat in de verstekbak is gezet en dan in verstek gezaagd met de hardmetalen tegelzaag.) Het hoekblok is gemaakt van kalkmörtel. Het is oplosbaar in water en gaat waarschijnlijk slechts een of twee klussen mee. Vraag altijd om professioneel advies bij het gebruik van zaagapparatuur. Raadpleeg de Fixing Guide (www.originalstyle.com/fixing.html) voor meer informatie.

TILE Panels

Here are just a few ideas for arranging and combining the different colours, patterns and mouldings.



▲ A9000 Field Tile Brilliant White, GLS9900 Albert, GLS9901 Victoria, GLS9906 Egg & Dart all London Stone, A9221 Rectangle Brilliant White and GCH9002 Half Field Tile Charcoal Grey.



A9900 Brilliant White Albert, GJB9909 Jade Breeze Omega, A9002 Brilliant White Half tile, GJB9023A Acanthus Jade Breeze, GJB9002 Jade Breeze Half tile.



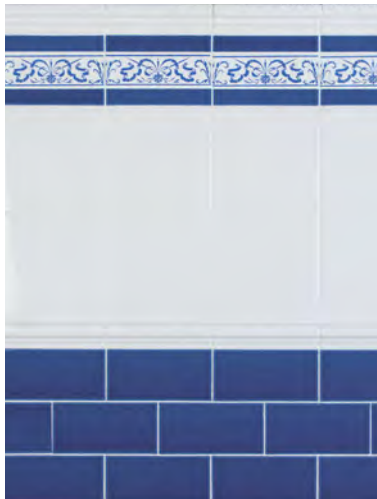
B9928 Colonial White Hogarth, B9002 Colonial White Half tile, GPV9923 Pavillion Green Scroll, B9000 Colonial White Field tile, GPV9927 Pavillion Green Astragal, GPV9923 Pavillion Green Scroll, GPV9002 Pavillion Green Half tile.



B9901 Colonial White Victoria, B9905 Colonial White Dentil, B9000 Colonial White Field tile, GLB9909 Jade Breeze Omega, B9924 Colonial White Ribbon & Reed, GJB9909 Jade Breeze Omega, GJB9002 Jade Breeze Half tile.



GLM9900 Lilac Mist Albert, B9221 Colonial White Rectangle, GLM9927 Lilac Mist Astragal, B9000 Colonial White Field tile, 5976B Lilium Border, B9909 Colonial White Omega, GLM9002 Lilac Mist Half tile.



A9900 Brilliant White Albert, GXB9221 Oxford Blue Rectangle, G9024A Hand Painted Love Knot, A9000 Brilliant White Field tile, GXB9002 Oxford Blue Half tile.



G9928 Royal Blue Hogarth, A9905 Brilliant White Dentil, G9909 Royal Blue Omega, A9002 Brilliant White Half tile, G9921 Royal Blue Sigma, A9923 Brilliant White Scroll, G9921 Royal Blue Sigma, G9002 Royal Blue Half tile.

TILE Panels



GCH9900 Charcoal Grey Albert, **PLAT9909** Platinum Omega, **A9032TP** Platinum on Brilliant White Fleur de Lis 2 Tile Set, **PLAT9909** Platinum Omega, **A9033TP** Platinum on Brilliant White Fleur de Lis Border, **PLAT9921** Platinum Sigma, **A9004** Brilliant White Metro.



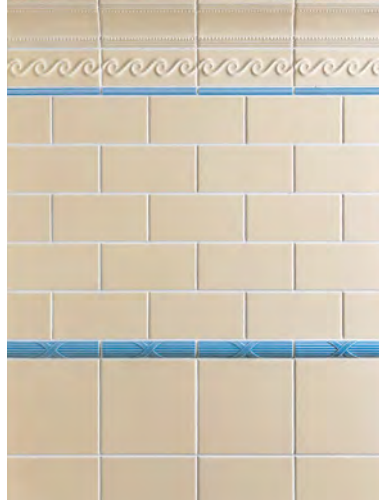
GEN9905 Antique Bronze Dentil, **B9002** Colonial White Half tile, **GEN9927** Antique Bronze Astragal, **B9000** Colonial White Field tile, **GEN9923** Antique Bronze Scroll, **B9903** Colonial White Skirting.



A9905 Brilliant White Dentil, **GLS9221** London Stone Rectangle, **A9927** Brilliant White Astragal, **A9002** Brilliant White Half tile, **A9902** Brilliant White Rope, **GLS9002** London Stone Half tile.



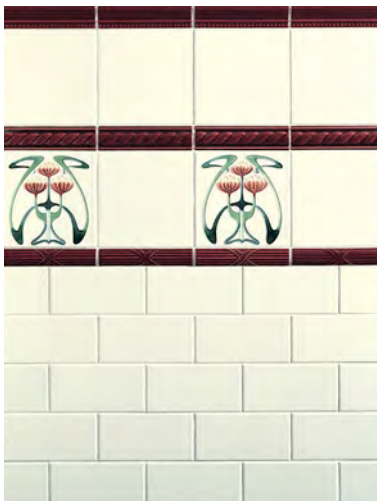
N9901 Jet Black Victoria, **A9221** Brilliant White Rectangle, **N9909** Jet Black Omega, **A9000** Brilliant White Field tile, **N9921** Jet Black Sigma, **A9906** Brilliant White Egg & Dart, **N9921** Jet Black Sigma, **A9002** Brilliant White Half Tile.



S9929 Regency Cream Plain Cornice, **S9907** Regency Cream Wave, **GAQ9909** Aqua Source Omega, **S9002** Regency Cream Half tile, **GAQ9924** Aqua Source Ribbon and Reed, **S9000** Regency Cream Field tile.



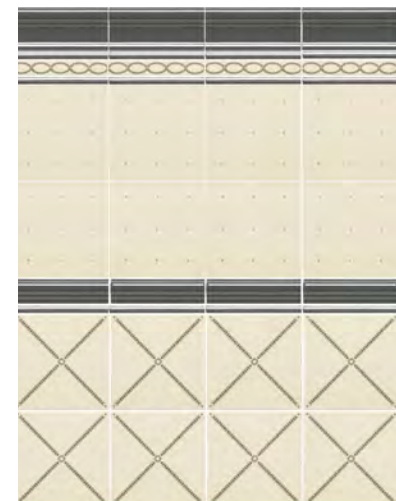
GPB9900 Palladian Beige Albert, **C9000** Imperial Ivory Field tile, **GPB9927** Palladian Beige Astragal, **C9907** Imperial Ivory Wave, **GPB9927** Palladian Beige Astragal, **GPB9002** Palladian Beige Half tile, **GPB9903** Palladian Beige Skirting.



F9928 Burgundy Hogarth, **B9000** Colonial White Field tile, **F9902** Burgundy Rope, **5973B** Belle Epoque Tube Lined tile, **F9924** Burgundy Ribbon and Reed, **B9002** Colonial White Half tile.



B9901 Colonial White Victoria, **B9222** Colonial White Square, **N9222** Jet Black Square (from Colourworks brochure), **N9909** Jet Black Omega, **B9000** Colonial White Field tile, **B9902** Colonial White Rope, **N9002** Jet Black Half tile.



GCH9901 Charcoal Grey Victoria, **PLAT9909** Platinum Omega, **7815B** Charcoal Grey on Colonial White Twisted Trellis, **PLAT9909** Platinum Omega, **7814B** Charcoal Grey on Colonial White Dot Field tile, **GCH9900** Charcoal Grey Albert, **PLAT9909** Platinum Omega, **7802B** Charcoal Grey on Colonial White Pearl Trellis.

IMPORTANT *Information*

SHADE VARIATION

Shade variation is an inherent feature of the manufacturing process of Artworks wall tiles. We recommend that tiles are loosely laid out and blended prior to fixing to achieve the most pleasing distribution of shades. Differences between batches can be more marked, so for this reason we recommend that you buy all the tiles at one time. No liability for shading issues can be accepted after installation.

NOMINAL DIMENSIONS

Throughout this brochure we quote nominal dimensions which are subject to slight variation within internationally accepted standards. Please note that as the mouldings are slip-cast not dust-pressed, the dimensions may vary. Where applicable, Original Style tiles are manufactured to conform to BS EN14411.

SCRATCHING

As with all glazed surfaces, some wearing or scratching may occur over time. Care should therefore be taken to select the proper tile for a given use. The wall tiles shown in this brochure are not recommended for surfaces subject to heavy wear.

CRAZING AND CRACKLE GLAZE TILES

Highly glazed ceramic tiles may craze with time, and no guarantee can be given against this occurrence. Crackle glaze Metro and half tiles will need sealing. Crackle glaze tiles are not recommended for use near power showers. Please refer to the Fixing Guide at www.originalstyle.com/fixing.html

COPPER-BASED GLAZE

Victorian Green tiles have a copper-based glaze which is prone to discolouration by very mild acids often found in the home. To avoid such discolouration they should be cleaned only with pure water and should always be wiped dry immediately after cleaning. These tiles should never be used in wet areas such as showers, bath surrounds or basin splashbacks.

SUITABILITY

Wall Tiles

Artworks wall tiles are not suitable for work surfaces, floors or external use. They are suitable for interior walls only, including walls in wet rooms and showers. This excludes Victorian Green tiles, which have a copper-based glaze prone to discolouration by very mild acids often found in the home. To avoid such discolouration they should be cleaned only with pure water and should always be wiped dry immediately after cleaning. These tiles should never be used in wet areas such as showers, bath surrounds or basin splashbacks.

Due to their shape Albert and Victoria mouldings are not recommended for use in areas subject to wall movement. It is also imperative that care is taken when grouting these mouldings to ensure moisture cannot get into the back of them as this may cause the moulding to crack.

The reverse sides of mouldings are prone to variance. This does not affect fixing. We cannot guarantee that glaze will cover the side edges of the profiles on page 68.

Floor Tiles

This brochure also includes floor mosaics. These are suitable for use on external and internal floors, including showers and wet rooms. Please refer to the Fixing Guide at www.originalstyle.com/fixing.html for more information.

Victorian Floor tiles (shown throughout this brochure) are suitable for internal and external floors. For full details of dimensions, suitability and fixing instructions, please refer to the Victorian Floor Tiles Fixing Guide at www.originalstyle.com/vft-fixing.html

HOW MANY TILES WILL YOU NEED?

Nominal Tile Size*	per m ²	per ft ²
Field tile 152 x 152 x 7mm (6" x 6" x 1/4")	43	4
Half tile 152 x 75 x 7mm (6" x 3" x 1/4")	86	8
Metro tile 152 x 75 (6" x 3")	86	8
Floor mosaics		
292 x 292 x 6mm (11 1/2" x 11 1/2" x 1/4")	11.7	1.09
292 x 310mm x 6mm (11 1/2" x 12 1/4" x 1/4")	11	1
297 x 257 x 6mm (11 3/4" x 10 1/8" x 1/4")	13.1	1.2
297 x 297 x 6mm (11 3/4" x 11 3/4" x 1/4")	11.3	1.04
Nominal Tile Moulding Length*	per linear m	per linear ft
152mm (6")	6.6	2

*Based on a 2mm/1/16" grout gap. Please allow 5 per cent extra for wastage.

External Corners

Available in left (L) and right (R) for a professional finish (in Brilliant White and Colonial White only).

INSTALLATION, ADHESIVES AND GROUTS

It is important to use the correct adhesive to match the substrate. We recommend D1 or D2 wall tile adhesives for Artworks tiles and mouldings which are placed on plasterboard or plaster walls. For all other substrate a flexible cement-based adhesive may be required. Please consult your tile stockist or adhesive manufacturer for their advice. Always use high quality adhesives and grouts following manufacturers' recommendations for their use and suitability for the type of tile, the application and the substrate being tiled. In all installations, seal joints with an impervious grout. If joints are not completely watertight, moisture can be absorbed into the tile body causing stains to show through the glaze. Use an average grout space of at least 2mm to allow for variations in tile dimensions. When installing in power showers, Epoxy grout must be used.

Do not install Original Style tiles directly into wet cement or sand and cement.

It is imperative to follow grout and adhesive manufacturers' instructions regarding their suitability with our products. If in doubt please consult the grout/adhesive stockist from whom you purchased the products. Original Style makes no representations as to the fitness for purpose of third party adhesives and grouts.

Sealing Joints

In all installations, especially shower cubicles, joints should be sealed with an impervious grout such as PCI Aquafug or an epoxy type. Joints between tiles and shower trays should be sealed with silicone sealant. If joints are not completely watertight moisture can be absorbed into the tile body causing stains to show through the translucent glaze. Silicone expansion joints should be incorporated under Victorian dados.

IMPORTANT *Information*

FIXING MOULDED TILES TO OUTSIDE CORNERS

To fix cornice and other moulded tiles to an outside corner one end of the tile must be carefully mitred at 45° with carborundum or a diamond edged saw. This has the effect of shortening the surface of the tile in contact with the wall.

VICTORIA MOULDINGS

Victoria mouldings should not be used on any wooden surfaces due to thermal expansion of the wood which may crack the moulding.

GOLD AND PLATINUM TILES AND MOULDINGS

Care must be taken when fixing and grouting tiles and mouldings including those with a precious metal finish.

NB Please refer to the fixing instructions at www.originalstyle.com/fixing.html before the installation of any tiles/mouldings with a precious metal finish.

Please note, we do not recommend the use of acid based cleaning products as they may cause some tiles to react and change in character. We only recommend a pH neutral cleaner. Do not use abrasive cleaners or materials on any tiles or mouldings including those with a precious metal finish.

MASTERPIECE TILES

Masterpiece tiles are available in two options:

- with brackets fixed to the back ('WB' is included in product code)
- with a plain back

With Brackets

The brackets makes the Masterpiece tiles suitable for hanging from a wall like a picture, which means that they can be placed in rooms such as bathrooms, kitchens, conservatories and over fireplaces, unlike conventional pictures, which could be damaged by steam, humidity, heat and ultra violet light.

Plain Back

The plain backed option makes the Masterpieces suitable for installation within a field of tiles. There are matching frames in Brilliant White, Colonial White and Black for the Alma-Tadema, Raphael, Botticelli and Monet Masterpieces, and matching Vienna Frames and Corners in Gold, Antique Gold, Platinum and Black for the Klimt Masterpiece. The frame sets including the Vienna frames and corners have been specially designed to match Masterpiece tiles and bridge the differences in thickness between these and field tiles ranging from 5-12mm ($\frac{7}{8}$ " x $\frac{15}{16}$ ").

Fixing Masterpiece Tiles and Frames

We strongly recommended that Original Style Masterpiece tiles and frames are installed by an experienced professional tiler. Masterpiece tiles should be handled with extreme care at all times. Masterpiece tiles can each weigh up to 7kg (15.4lb) and could cause personal injury if dropped. Masterpiece tiles have a water absorption capacity of less than 3 per cent. It is important to follow the adhesive and grout manufacturers' instructions at all times.

NB Please refer to the fixing instructions at www.originalstyle.com/fixing.html before installation of any Masterpiece tiles.

Cleaning

Original Style Masterpiece tiles should be rinsed with clean water and wiped off with a soft, dry cloth in exactly the same way as normal glazed wall tiles.

For full fixing instructions, please refer to the Masterpiece Tiles and Frames section in the Original Style Fixing Guide at www.originalstyle.com/fixing.html

In the USA please follow the recommendations of a reputable adhesive manufacturer and always comply with American National Standards Institute (ANSI) specifications as set out in the Handbook for Ceramic Tile Installation published by the Tile Council of America. Useful links: www.ctoa.org www.tileusa.com

PHOTOGRAPHY

Owing to variations in studio lighting and printing inks, the tile colours shown in this brochure may differ slightly from those of the actual tiles. It is always advisable to ask your Original Style supplier to show you a sample.

LIMITS OF LIABILITY

Original Style accepts no liability for the faulty installation of its products. In the case of any claim relating to the tiles themselves, Original Style's liability, to the extent permitted by law, is limited to either the replacement of the product or a refund of the cost of the product, and does not extend to cover any consequential loss. Claims must be reported within seven working days from receipt of the tiles. Tiles must be inspected prior to installation and claims cannot be considered after the tiles have been installed.

Please be advised that installation constitutes acceptance of the quality, colour, size, texture and shade of the tiles. Original Style warrants that its tiles conform to their description and are fit for their purpose. Original Style makes no other express or implied warranty as to fitness or suitability of the products for particular installations. We extend no guarantees, express or implied, as to wear resistance or maintenance procedures.

Please note the use of certain acid based cleaning products may cause some of the tiles to react and change in character.

ACKNOWLEDGEMENTS

We are very grateful to the following companies for their assistance with the photographic settings:

Amos Lighting	www.amoslighting.co.uk
Antique Bathrooms of Ivybridge	www.antiquebaths.com
Annterior Design	+44(0)1752 558277
B.C Sanitan	www.bcsanitan.co.uk
Bel-Ami	+44(0)1404 549841
Bristan	www.bristan.com
Chadder & Co	www.chadder.com
Debenhams	www.debenhams.com
Eclectique	www.eclectique.co.uk
Fagins Antiques	www.faginsantiques.com
Furniture Village	www.furniturevillage.co.uk
John Lewis	www.johnlewis.com
Laura Ashley	www.lauraashley.com
Merchant House Antiques	www.merchanthouseantiques.co.uk
Next	www.next.co.uk
Orange Tree	www.theorangetree.co.uk
Pilgrim Antiques	www.pilgrimantiques.co.uk
Reflections Bathrooms	+44 (0) 1392 204529
Samuel Heath	www.samuel-heath.com
B. C Sanitan	www.bcsanitan.co.uk
Totnes Tile Studio	+44 (0) 1803 865865
Traditional Bathrooms GmbH	http://traditional-bathrooms.de
UKBW	www.ukbw.com

Some photography reproduced in this brochure is courtesy of Horus S.A.
www.horusfrance.com

INFORMATIONS

Essentielles

VARIATION DE TEINTE

La variation de teinte est une caractéristique inhérente au processus de fabrication du carrelage mural Artworks. Nous vous recommandons d'étaler les carreaux et de les agencer avant de les fixer, afin de répartir les différentes teintes de la manière la plus harmonieuse. Les différences sont plus marquées d'un lot à l'autre, ainsi nous vous recommandons vivement d'acheter tous les carreaux en une seule fois. Nous n'accepterons aucune responsabilité pour les problèmes liés à la teinte une fois les carreaux installés.

DIMENSIONS NOMINALES

Tout au long de cette brochure, nous indiquons les dimensions nominales qui peuvent être sujettes à de légères variations, mais toujours dans la limite des normes internationales en vigueur. Veuillez noter que, comme les moulures sont coulés en barbotine et non pressés à sec, les dimensions pourraient présenter des variations.

Les carreaux Original Style sont fabriqués en conformité avec la norme BS EN14411, dans tous les cas où cette norme s'applique.

RAYURES

Comme pour toutes les surfaces vitrifiées, les carreaux peuvent s'user ou se rayer avec le temps. Soyez donc vigilants de choisir les carreaux qui correspondent le mieux à l'usage que vous en ferez. Les carrelages muraux présentés dans cette brochure ne conviennent pas à des surfaces sujets à une usure intense.

CRAQUELURES ET LES CARREAUX CRACKLE GLAZE

Les carreaux en céramique fortement vitrifiés peuvent se craqueler au fil du temps. Nous ne pouvons offrir aucune garantie contre cette éventualité. Il faut traiter les carreaux Crackle Glaze avec un bouche-pore. Les demi-carreaux et carreaux metro avec un email craquelé ne sont pas prévus pour une utilisation dans les douches avec jets à haute pression. Veuillez consulter le Guide de Fixation: www.originalstyle.com/fixing.html

EMAUX À BASE DE CUIVRE

Les carreaux Victorian Green ne doivent jamais être posés dans des endroits humides, tels que dans une douche, autour d'une baignoire ou comme crédence pour évier. L'email de ces carreaux, à base de cuivre, est susceptible de se décolorer sous l'effet des acides doux couramment utilisés dans les maisons. Pour éviter une telle décoloration, ils doivent être lavés à l'eau pure uniquement et toujours être séchés immédiatement après lavage.

USAGE

Carrelages muraux

Les carrelages muraux Artworks ne conviennent pas pour les surfaces de travail, les sols ou l'usage extérieur. Ils conviennent uniquement à une pose murale en intérieur, y compris dans les salles de bains et les douches, sauf pour les carreaux Victorian Green, dont l'email à base de cuivre est susceptible de se décolorer sous l'effet des acides couramment utilisés dans les maisons. Pour éviter une telle décoloration, ces carreaux doivent être lavés à l'eau pure uniquement et doivent toujours être séchés immédiatement après lavage. Ces carreaux ne doivent jamais être posés dans des endroits humides, dans une douche, autour d'une baignoire ou comme dossier d'évier.

A cause de leur forme, les moulures Albert et Victoria ne sont pas recommandées pour une utilisation dans des emplacements où les parois sont susceptibles de bouger. Il est aussi impératif, lors du jointement de ces moulures, de s'assurer que l'humidité ne pourra s'infiltrer par derrière, sinon les moulures risquent de se lézarder au fil du temps.

Le dos des moulures est susceptible de varier. Cela n'affecte en rien la pose. Notez que nous ne pouvons garantir que les bords latéraux des profils illustrés en page 68 seront émaillés.

Carreaux de sol

Cette brochure comprend aussi des mosaïques pour sol. Celles-ci peuvent être utilisées sur les sols intérieurs et extérieurs, y compris les douches et les salles de bain. Veuillez vous référer au Guide d'installation sur www.originalstyle.com/fixing.html pour de plus amples informations.

Les carreaux de sol Victorian (illustrés tout au long de cette brochure) sont aussi utilisables sur sols intérieurs et extérieurs. Pour des informations complètes concernant les dimensions, l'usage et les instructions d'installation, veuillez vous reporter au Guide d'installation des carreaux de sol Victorian sur www.originalstyle.com/vft-fixing.html

INSTALLATION, COLLES ET JOINTS

Il est important d'utiliser une colle appropriée qui correspondra au sujet. Nous recommandons des colles D1 ou D2 pour carreaux muraux pour les carreaux et les moulures Artworks qui seront appliqués sur des murs en plâtre ou Placoplatre. Pour tout autre sujet, une colle flexible à base de ciment sera probablement nécessaire. Veuillez demander conseil auprès de votre revendeur de carreaux ou fabricant de colles. Veillez à toujours utiliser une colle et un ciment-joint de haute qualité et à suivre les recommandations du fabricant concernant leur utilisation, le type de carreaux auquel ils sont adaptés, leur application et le sujet sur lequel les carreaux seront installés. Pour toute installation, assurez-vous de poser des joints étanches. Si les joints ne sont pas complètement étanches, les carreaux risqueront d'absorber l'humidité, ce qui fera apparaître des taches à travers l'email. Veillez à ce que l'écart de joint soit de 2 mm en moyenne, au cas où la dimension des carreaux présente de légères variations. Si les carreaux sont installés dans une douche multi-jets, vous devez utiliser un joint Époxy.

N'installez pas les carreaux Original Style directement sur du ciment frais ou un mélange de sable et de ciment frais.

Il est impératif de suivre les instructions des fabricants de colles et de ciments-joints afin d'en vérifier la compatibilité avec nos produits. En cas de doute, consultez le revendeur qui vous aura fourni la colle ou le ciment-joint. Original Style n'assumera aucune responsabilité en ce qui concerne la compatibilité ou l'usage de colles et de ciments-joints tiers.

Joint d'étanchéité

Dans toutes les installations, et en particulier dans les cabines de douche, il est recommandé d'étanchéiser les joints avec un enduit étanche tel que PCI Aquafug ou un enduit de type Epoxy. Pour les joints entre les carreaux et le bac à douche, il est conseillé d'utiliser un agent d'étanchéité à base de silicone. Si les joints ne sont pas complètement étanches, les carreaux risqueront d'absorber l'humidité, ce qui fera apparaître des taches à travers l'email translucide. Enfin, des joints de dilatation en silicone doivent être incorporés sous les plinthes Victorian.

DE COMBIEN DE CARREAUX AUREZ-VOUS BESOIN ?

Taille nominale du carreau*	par mètre carré
Carreau entier 152 x 152 x 7mm	43
Demi-carreau 152 x 75 x 7mm	86
Metro-carreau 152 x 75 x 7mm	86
Mosaïques pour sol	
292 x 292 x 6mm	11.7
292 x 310 x 6mm	11
297 x 257 x 6mm	13.1
297 x 297 x 6mm	11.3
Longueur nominale du moulage des carreaux*	par mètre linéaire
152mm	6,6

*En prenant en compte un écart de joint de 2mm. Prévoyez 5% supplémentaires pour compte des pertes.

POSER DES CARREAUX MOULÉS SUR DES ANGLES SAILLANTS

Pour poser les corniches et autres carreaux moulés sur un angle saillant, l'une des extrémités du carreau devra être délicatement biseautée à 45° avec du carborundum ou une scie diamantée. Cela aura pour effet de réduire la surface du carreau en contact avec la paroi.

MOULURES VICTORIA

Il est fortement déconseillé de poser les moulures Victoria sur des surfaces en bois car l'expansion thermique du bois risque de craqueler les moulures.

CARREAUX ET MOULURES EN OR ET PLATINE

Veillez prendre le plus grand soin lors de la pose et du jointement des carreaux et moulures, surtout si leur finition est en métal précieux.

NB Veuillez vous reporter aux instructions d'installation sur www.originalstyle.com/fixing.html avant d'installer tout carreau ou toute moulure avec une finition en métal précieux.

Veillez noter que l'utilisation de certains produits nettoyants à base d'acide peut provoquer des réactions sur certains carreaux et en modifier les caractéristiques. Nous recommandons uniquement l'usage d'un produit nettoyant au pH neutre. N'utilisez jamais de produits nettoyants ou de matériaux abrasifs sur les carreaux ou moulures, y compris sur ceux dont la finition est en métal précieux.

WICHTIGE Informationen

CARREAUX CHEF D'ŒUVRE

Les carreaux Chef-d'œuvre sont disponibles en deux versions :
– avec appliques fixées au dos (le code de produit comprend les lettres 'WB')
– avec dos nu

Avec appliques

Les appliques permettent de pendre les carreaux Chef-d'œuvre à un mur comme un tableau, ce qui signifie que vous pouvez les poser dans des pièces telles qu'une salle de bain, une cuisine et un jardin d'hiver ou encore au-dessus d'une cheminée, au contraire des tableaux conventionnels que la vapeur, l'humidité, la chaleur et les rayons ultraviolets finiraient par endommager.

Dos nu

La version des carreaux Chef-d'œuvre avec dos nu permet de les installer parmi un ensemble de carreaux. Des cadres assortis sont disponibles en Brilliant White, Colonial White et Black pour les Chefs-d'œuvre d'Alma-Tadema, Raphael, Botticelli et Monet, de même que des cadres et angles viennois assortis en Gold, Antique Gold, Platinum et Black pour le Chef-d'œuvre de Klimt. Ces ensembles de cadres, y compris les cadres et angles viennois, ont été spécialement conçus pour être assortis aux carreaux Chef-d'œuvre et atténuer les différences d'épaisseur entre ces carreaux et les carreaux unis, qui varient de 5 à 12 mm.

Installer les carreaux et cadres Chef-d'œuvre

Nous vous recommandons vivement de faire installer les carreaux et cadres Chef-d'œuvre d'Original Style par un carreleur professionnel et expérimenté. Les carreaux Chef-d'œuvre doivent toujours être manipulés avec le plus grand soin. Chaque carreau peut peser jusqu'à 7 kg. Si une personne fait tomber l'un de ces carreaux, elle risque de se blesser. La capacité d'absorption d'eau des carreaux Chef-d'œuvre est inférieure à 3%. Il est impératif de suivre scrupuleusement les instructions de votre fabriquant de colle et de mastic.

NB Veuillez vous référer au Guide d'installation sur www.originalstyle.com/fixing.html avant de procéder à l'installation des carreaux Chef-d'œuvre.

Nettoyage

Les carreaux Original Style Masterpiece doivent être rincés à l'eau propre et séchés avec un chiffon doux et sec, de la même manière que les carreaux émaillés ordinaires.

Pour des instructions complètes concernant l'installation, veuillez vous reporter à la section Carreaux et Supports Masterpiece du Guide d'installation d'Original Style sur www.originalstyle.com/fixing.html

Si vous vous trouvez aux Etats-Unis, veuillez suivre les recommandations d'un fabricant de colles réputé et conformez-vous toujours aux spécifications de l'American National Standards Institute (ANSI), décrites dans le Manuel pour l'installation de carreaux en céramique (Handbook for Ceramic Tile Installation) publié par le Tile Council of America. Liens utiles : www.ctoa.org, www.tileusa.com.

PHOTOGRAPHIES

L'éclairage en studio et les encres utilisées pour l'impression peuvent affecter la couleur des carreaux présentés dans ce catalogue. Avant de passer commande, il est toujours préférable de vous procurer des échantillons auprès d'un revendeur Original Style.

LIMITATION DE RESPONSABILITÉ

Original Style dégage toute responsabilité en cas d'installation incorrecte de ses produits. En cas de réclamation relative aux carreaux eux-mêmes, la responsabilité d'Original Style sera confinée, dans la limite autorisée par la loi, au remplacement du produit ou au remboursement du prix du produit, et ne couvre pas les dommages indirects. Toute réclamation doit être effectuée dans les sept jours suivant la réception des carreaux. Les carreaux doivent être inspectés avant installation. Aucune réclamation ne sera prise en compte une fois les carreaux installés.

Notez que l'installation du carrelage constitue l'acceptation de la qualité, de la couleur, de la taille, de la texture et de la teinte des carreaux. Original Style garantit que ses carreaux sont conformes au descriptif fourni et qu'ils sont adaptés à l'usage pour lequel ils sont prévus. Original Style ne formule aucune garantie expresse ou implicite supplémentaire vis-à-vis de l'adéquation ou de la compatibilité de ses produits dans des installations spécifiques. Nous ne formulons aucune garantie, expresse ou implicite, vis-à-vis de la résistance à l'usure ou des procédures d'entretien.

Veuillez noter que l'utilisation de certains produits nettoyants à base d'acide peut provoquer des réactions sur certains carreaux et en modifier les caractéristiques.

SCHATTENVARIATION

Schattenvariation ist eine Eigenschaft im Herstellungsprozess der Artworks-Wandfliesen. Wir empfehlen, die Fliesen vor der Anbringung lose auszulegen und so zu mischen, dass der angenehmste Schattenwurf entsteht. Unterschiede zwischen einzelnen Chargen können sogar noch deutlicher ausfallen. Aus diesem Grund empfehlen wir dringend, dass Sie alle Fliesen auf einmal kaufen. Wir können keine Haftung für eventuelle Farbprobleme nach der Installation übernehmen.

SOLLMASSE

In dieser Broschüre geben wir Sollmaße an, die leichten Abweichungen innerhalb international anerkannter Normen unterliegen. Da unsere Formen per Schlickerguss und nicht durch Trockenpressen hergestellt werden, können die Maße leicht variieren.

Sofern anwendbar werden Fliesen von Original Style gemäß dem Standard BS EN14411 hergestellt.

KRAKELIERTE FLIESEN UND FLIESEN MIT HAARRISSEN

Wie bei allen glasierten Oberflächen können mit der Zeit Anzeichen von Abnutzung und leichte Haarrisse auftreten. Daher ist es wichtig, von vornherein die richtige Fliese für den jeweiligen Einsatz zu wählen. Die in dieser Broschüre abgebildeten Wandfliesen eignen sich nicht für stark belastete Oberflächen. Krakelierte Fliesen sollten versiegelt werden. Bitte beziehen Sie sich auf die Installationsanleitung unter www.originalstyle.com/fixing.html

KUPFERHALTIGE GLASUR

Diese Fliesen sollten niemals in feuchten Bereichen wie Duschen, Badumgebungen oder als Beckenspritzschutz verwendet werden. Die Fliesen haben eine kupferbasierte Glasur, die durch die oft im Haushalt zu findenden milden Säuren ausgefärbt werden kann. Um eine derartige Ausfärbung zu vermeiden, sollten sie nur mit klarem Wasser gesäubert und nach dem Säubern sofort trockengewischt werden.

RISSE

Stark glasierte Keramikfliesen können mit der Zeit Risse bekommen und wir können in dieser Hinsicht keine Gewähr übernehmen.

EIGNUNG

Wandfliesen

Artworks-Wandfliesen eignen sich nicht für Arbeitsflächen, Böden oder den Außenbereich. Sie sind nur für Innenwände geeignet, einschließlich Wänden in Feuchträumen und Duschen. Davon ausgenommen sind die Fliesen der Serie Victorian Green, deren kupferbasierte Glasur durch die oft im Haushalt zu findenden milden Säuren ausgefärbt werden kann. Um eine derartige Ausfärbung zu vermeiden, sollten sie nur mit klarem Wasser gesäubert und nach dem Säubern sofort trockengewischt werden. Diese Fliesen sollten niemals in feuchten Bereichen wie Duschen, Badumgebungen oder als Beckenspritzschutz verwendet werden.

Aufgrund ihrer Form ist es nicht empfehlenswert, die Einfassungen Albert und Victoria in Bereichen mit Wandbewegung anzubringen. Außerdem ist beim Ausfügen dieser Einfassungen Vorsicht geboten, um sicherzustellen, dass keine Feuchtigkeit zurück in die Einfassung gelangt, da sie dadurch platzen kann.

Die Rückseiten der Einfassungen können voneinander abweichen. Dies hat keine Auswirkung auf die Anbringung. Wir können nicht garantieren, dass die Glasur die Seitenkanten des auf Seite 68 gezeigten Profils abdeckt.

Bodenfliesen

In dieser Broschüre finden Sie auch Bodenmosaiken. Sie sind für die Verwendung auf Außen- und Innenböden geeignet, einschließlich Duschen und Feuchträumen. Weitere Informationen finden Sie in der Installationsanweisung unter www.originalstyle.com/fixing.html

Bodenfliesen Victorian (in der gesamten Broschüre zu finden) eignen sich für Böden im Innen- und Außenbereich. Ausführliche Details zu Größen, Eignung und Installationsanweisungen finden Sie in der Installationsanweisung für Victorian-Bodenfliesen unter www.originalstyle.com/vft-fixing.html

WICHTIGE Informationen

INSTALLATION, KLEBER UND FUGEN

Es ist wichtig, den für den Bodenuntergrund passenden Fliesenkleber zu verwenden. Für Fliesen und Einfassungen von Artworks, die auf Gipskartonplatten oder Wandputz geklebt werden, empfehlen wir Wandfliesenkleber D1 oder D2. Für alle anderen Böden ist gegebenenfalls ein flexibler, zementbasierter Kleber erforderlich. Bitte fragen Sie Ihren Fliesenhändler oder Kleberhersteller um Rat. Verwenden Sie immer hochwertige Kleber und Fugenmasse. Folgen Sie den Anweisungen des Herstellers bezüglich Verwendung und Eignung für bestimmte Fliesenarten, Einsatzbereiche und Substrate. In jedem Fall sind die Fugen mit einer wasserdichten Fugenmasse abzudichten. Wenn die Fugen nicht vollständig wasserdicht sind, kann Feuchtigkeit in den Fliesenträger eindringen und Verfärbungen der Glasur verursachen. Die Fugenbreite muss mindestens 2mm betragen, um Unterschiede in den Fliesenabmessungen ausgleichen zu können. Bei der Installation in druckverstärkten Duschen ist Epoxid zu verwenden. Bringen Sie Fliesen von Original Style nicht direkt auf feuchtem Zement oder Sand und Zement an.

Es ist unerlässlich, die Anweisungen der Fugenmasse- und Fliesenkleberhersteller zur Eignung für unsere Produkte zu befolgen. Bitte wenden Sie sich im Zweifelsfall an den Fugenmasse-/ Kleberhändler, bei dem Sie die Produkte gekauft haben. Original Style äußert sich nicht zur Gebrauchstauglichkeit von Klebern und Fugenmasse von Drittanbietern.

Dichtungsfugen

Bei allen Installationen, besonders in Duschkabinen, sollten Fugen mit einer wasserdichten Fugenmasse wie PCI Aquafug oder einer Epoxid-Fugenmasse verfugt werden. Fugen zwischen Fliesen und Duschwannen sollten mit Silikonichtmasse verfugt werden. Sind die Fugen nicht vollkommen wasserdicht, kann Feuchtigkeit in den Fliesenboden eindringen und auf den lichtdurchlässigen Fliesen Flecken verursachen. Unter den Victorian-Nuten sollten Silikondehnungsfugen angebracht werden.

WIE VIELE FLIESEN BRAUCHEN SIE?

Nennmaße der Fliese*	pro Quadratmeter
Fliese (Field-Tile) 152 x 152 x 7mm	43
Halbfliese 152 x 75 x 7mm	86
Metro-fliese 152 x 75 x 7mm	86
Bodenmosaik	
292 x 292 x 6mm	11.7
292 x 310 x 6mm	11
297 x 257 x 6mm	13.1
297 x 297 x 6mm	11.3
Genormte Länge der Bordüre*	pro lfd. Meter
152mm	6,6

*Basierend auf einer Fugenbreite von 2mm. Bitte rechnen Sie 5 Prozent zusätzlich als Verbrauch ein.

Außenecken

Erhältlich in links (L) und rechts (R) für einen professionellen Abschluss (nur in Brilliant White und Colonial White).

GEFORMTE FLIESEN AN AUßENECKEN ANBRINGEN

Um Randleisten und andere geformte Fliesen an einer Außenecke anzubringen, muss ein Ende der Fliese sorgfältig mit einem Karborund oder einer Diamantsäge auf 45° gekehrt werden. Dadurch verkürzt sich die Oberfläche der Fliese, die Kontakt mit der Wand hat.

VICTORIA-EINFASSUNGEN

Victoria-Einfassungen sollten nicht auf hölzernen Oberflächen verwendet werden, da die Einfassung aufgrund der Wärmeausdehnung des Holzes platzen kann.

EINFASSUNGEN GOLD UND PLATINUM

Vorsicht beim Verlegen und Verfugen der Fliesen und Einfassungen, einschließlich derjenigen mit einem Edelmetalleffekt.

Hinweis: Bitte beachten Sie die Installationsanweisungen unter www.originalstyle.com/fixing.html, bevor Sie mit dem Verlegen von Fliesen bzw. Einfassungen mit Edelmetalleffekt beginnen.

Beachten Sie bitte, dass die Fliesen bei Verwendung von säurebasierten Reinigungsmitteln reagieren und ihr Aussehen verändern können. Wir empfehlen ausschließlich einen pH-neutralen Reiniger. Verwenden Sie keine scheuernden Mittel oder Materialien auf Fliesen oder Einfassungen, einschließlich derjenigen mit Edelmetalleffekt.

MASTERPIECE FLIESEN

Masterpiece Fliesen sind in zwei Varianten erhältlich:

- Mit Haltern auf der Rückseite (Produktcode enthält Kennzeichnung „WB“)
- Mit einfacher Rückseite

Mit Haltern

Mit Hilfe der Halter können die Masterpiece Fliesen wie ein Bild an der Wand aufgehängt werden, so dass sie in Räumen wie Badezimmer, Küchen, Wintergärten und über dem Kamin zur Geltung kommen – im Gegensatz zu normalen Bildern, die durch Dampf, Feuchtigkeit, Hitze und ultraviolettes Licht beschädigt werden könnten.

Einfache Rückseite

Masterpiece Fliesen mit einfacher Rückseite können in eine Fliesenfläche integriert werden. Es gibt passende Rahmen in den Farben Brilliant White, Colonial White und Black für die Masterpieces Alma-Tadema, Raphael, Botticelli und Monet, und passende Vienna Rahmen und Eckfliesen in Gold, Antique Gold, Platinum und Black für das Klimt Masterpiece. Die Rahmen-Sets einschließlich der Vienna Rahmen und Eckfliesen wurden speziell für die Masterpiece Fliesen entwickelt und überbrücken die Unterschiede in der Dicke zwischen diesen und den Grundfliesen von 5 bis 12 mm.

Installation von Masterpiece Fliesen und Rahmen

Wir empfehlen dringend, Fliesen und Rahmen der Serie Original Style Masterpiece nur von einem erfahrenen Fliesenleger legen zu lassen. Masterpiece-Fliesen sollten jederzeit mit äußerster Sorgfalt behandelt werden. Einzelne Fliesen wiegen bis zu 7 kg. Sie können sich verletzen, wenn Sie eine Fliese fallen lassen. Masterpiece-Fliesen haben eine maximale Wasseraufnahmekapazität von weniger als 3 Prozent. Es ist wichtig, jederzeit die Anweisungen des Fliesenkleberherstellers zu befolgen.

Hinweis: Bitte beachten Sie die Installationsanweisungen unter www.originalstyle.com/fixing.html, bevor Sie mit dem Verlegen von Masterpiece Fliesen beginnen.

Reinigung

Original Style Masterpiece-Fliesen sollten wie normale glasierte Wandfliesen mit sauberem Wasser abgespült und mit einem weichen, trockenen Tuch abgewischt werden.

Ausführliche Installationsanweisungen finden Sie im Abschnitt Fliesen und Rahmen der Serie Masterpiece in der Installationsanweisung von Original Style unter www.originalstyle.com/fixing.html

Wenn Sie in den USA wohnen, dann folgen Sie den Anweisungen eines renommierten Kleberherstellers und beachten Sie dabei immer die Spezifikationen des amerikanischen staatlichen Normenverbands (ANSI), wie sie im Handbuch für die Installation von Keramikfliesen vorgeschrieben sind, das vom Tile Council of America herausgegeben wurde. Nützliche Webseiten sind: www.ctoa.org, www.tileusa.com.

FOTOGRAFIE

Aufgrund von Abweichungen bei der Studiobeleuchtung und Druckfarben, können die Fliesenfarben, die in dieser Broschüre dargestellt sind, leicht von den Farben der tatsächlichen Fliesen abweichen. Bevor Sie Ihre Auswahl treffen, sollten Sie zuvor immer einen Einzelhändler für Original Style nach Mustern fragen.

HAFTUNGSBESCHRÄNKUNGEN

Original Style übernimmt für die fehlerhafte Installation seiner Fliesen keine Haftung. Sollte es Reklamationen bezüglich der Fliesen selbst geben, dann beschränkt sich die gesetzlich eingeräumte Haftung von Original Style lediglich auf den Artikelaustausch oder Kostenrückerstattung. Reklamationen müssen innerhalb von sieben Arbeitstagen nach Erhalt der Fliesen erfolgen. Fliesen müssen vor der Installation kontrolliert werden. Eine Reklamation nach der Installation ist nicht möglich.

Bitte beachten Sie, dass Sie mit der Installation die Qualität, Farbgebung, Textur oder Schattierung sowie das Format der Fliesen akzeptieren und keine Beanstandungen anzeigen. Original Style gewährleistet die Beschreibungs- und zweckgemäße Fabrikationsausführung der Fliesen. Original Style gibt keine weiteren ausdrücklichen oder impliziten Garantien hinsichtlich Eignung der Artikel für besondere Installationsarten. Wir geben weder ausdrücklich noch implizit eine Garantieverlängerung auf Abnutzungsverhalten oder Wartungsarbeiten.

Beachten Sie bitte, dass die Fliesen bei Verwendung von säurebasierten Reinigungsmitteln reagieren und ihr Aussehen verändern können.

BELANGRIJKE Informatie

KLEURNUANCES

Uiteenlopende kleurnuances zijn een inherente eigenschap van het productieproces van Artworks-muurtegels. We raden aan dat de tegels losjes worden neergelegd en gemengd voordat ze worden aangebracht. Zo krijgt u de mooiste verdeling van de kleurnuances. De verschillen tussen partijen kunnen duidelijker zichtbaar zijn. We raden u daarom aan alle tegels tegelijk te bestellen. We zijn niet aansprakelijk voor problemen met de kleurnuanciering na het aanbrengen.

NOMINALE AFMETINGEN

In deze hele brochure vermelden we nominale afmetingen, die geringe variaties kunnen vertonen binnen internationaal geaccepteerde normen. Omdat de profielen zijn gegoten en niet geperst, kunnen de afmetingen verschillen.

Original Style-tegels worden, indien van toepassing, geproduceerd volgens de BS EN 14411-norm.

KRASSEN EN SLIJTAGE

Zoals bij alle geglaazuurde oppervlakken, kunnen er na verloop van tijd slijtage en krassen ontstaan. Kies daarom zorgvuldig de juiste tegel voor een bepaalde toepassing. De muurtegels in deze brochure zijn niet aanbevolen voor oppervlakken die onderhevig zijn aan zware slijtage.

GE CRAQUELEERDE TEGELS EN TEGELS MET HAARSCHERTJES

In sterk geglaazuurde, keramische tegels kunnen na verloop van tijd haarschertjes ontstaan. Wij kunnen geen dienaangaande geen enkele garantie bieden. Gecraqueleerde tegels moeten worden geïmpregneerd. Gecraqueleerde Metro en halve tegels worden niet aanbevolen in de nabijheid van power showers. Meer informatie kunt u vinden in de Fixing Guide: www.originalstyle.com/fixing.html

GLAZUUR OP KOPERBASIS

Tegels van Victorian Green mogen nooit op vochtige plekken worden gebruikt, zoals douchecabines, rondom een bad of achter wasbakken. Deze tegels hebben een glazuur op koperbasis, waardoor ze kunnen verkleuren door huishoudmiddelen die lichte zuren bevatten. Om verkleuring te voorkomen, moeten ze uitsluitend worden gereinigd met zuiver water en direct na reiniging worden afgedroogd.

TOEPASSELIGHEID

Muurtegels

Artworks-muurtegels zijn niet geschikt voor werkoppervlakken, vloeren en buitengebruik. Ze zijn uitsluitend geschikt voor binnenmuren, waaronder muren in natte ruimten en douches. Dit geldt niet voor Victorian Green-tegels. Deze tegels hebben een glazuur op koperbasis, waardoor ze kunnen verkleuren door huishoudmiddelen die lichte zuren bevatten. Om verkleuring te voorkomen, moeten ze uitsluitend worden gereinigd met zuiver water en direct na reiniging worden afgedroogd. Deze tegels mogen nooit worden gebruikt in natte ruimten, zoals douches, rondom het bad en achter het aanrecht.

Vanwege hun vorm zijn de profielen Albert en Victoria niet aanbevolen voor gebruik op muuroppervlakken met speling. Deze profielen moeten ook beslist zorgvuldig worden gevoegd om ervoor te zorgen dat er geen water achter kan komen, waardoor de profielen zouden kunnen barsten.

De achterzijde van profielen kan vormvariatie vertonen. Dit is niet van invloed op het zetten. We kunnen niet garanderen dat de zijanten van de profielen op pagina 68 met glazuur zijn bedekt.

Vloortegels

Deze brochure bevat ook mozaïektegels voor op de vloer. Deze tegels zijn geschikt voor binnen- en buitenvloeren, waaronder die van douches en natte ruimten. Raadpleeg de Fixing Guide (www.originalstyle.com/fixing.html) voor meer informatie.

De Victorian-vloortegels die overal in deze brochure worden getoond zijn geschikt voor binnen- en buitenvloeren. Raadpleeg de Victorian Floor Tiles Fixing Guide (www.originalstyle.com/fixing.html) voor alle informatie over afmetingen, geschiktheid en tegelinstructies. www.originalstyle.com/vft-fixing.html

AANBRENGEN, LIJMEN EN VOEGMIDDELEN

Het is van belang dat u lijm gebruikt die geschikt is voor een bepaalde ondergrond. Voor het aanbrengen van Artworks-tegels en -profielen op muren van gipsplaat of gepleisterde muren raden we muurteggelijm van klasse D1 of D2 aan. Voor alle andere ondergronden kan een flexibele lijm op cementbasis vereist zijn. Vraag uw tegelspecialist of de lijmfabrikant om advies. Gebruik altijd lijm en voegmiddel van hoge kwaliteit en volg de richtlijnen van de

fabrikant inzake gebruik en geschiktheid voor het type tegel, de toepassing en de ondergrond die wordt betegeld. Gebruik voor alle klussen een waterdicht voegmiddel. Indien de voegen niet volledig betegeld. Gebruik voor alle klussen een waterdicht voegmiddel. Indien de voegen niet volledig waterdicht zijn, kunnen de tegels vocht opzuigen en kunnen er vlekken achter het glazuur verschijnen. Gebruik een gemiddelde voegbreedte van minimaal 2mm om de verschillen in de afmetingen van de tegels op te vangen. Gebruik voor tegels in een power shower een voegmiddel op epoxybasis.

Breng Original Style-tegels nooit direct aan op nat cement of een natte mortel van zand en cement. Volg beslist de instructies van de fabrikanten van de voegmiddelen en lijmen op inzake hun geschiktheid voor onze producten. Raadpleeg in geval van twijfel de voegmiddelen- of lijmspecialist bij wie u de producten hebt gekocht. Original Style staat niet in voor de geschiktheid en doelmatigheid van lijmen en voegmiddelen van derden.

Voegen

Gebruik voor alle klussen, en met name in douchecabines, een waterdicht voegmiddel, zoals PCI Aquafug of een voegmiddel op epoxybasis. De naden tussen tegels en douchebakken moeten worden afgedicht met siliconenkit. Indien de voegen niet volledig waterdicht zijn, kunnen de tegels vocht opzuigen en kunnen er vlekken achter het doorschijnende glazuur verschijnen. Onder Victorian-plinten moeten expansievoegen van siliconenkit worden aangebracht.

HOVEEL TEGELS HEEFT U NODIG?

Nominale tegelafmetingen*	Per vierkante meter
Basistegel 152 x 152 x 7mm	43
Halve tegel 152 x 75 x 7mm	86
Metro-tegel 152 x 75 x 7mm	86
Mozaïektegels voor op de vloer	
292 x 292 x 6mm	11.7
292 x 310 x 6mm	11
297 x 257 x 6mm	13.1
297 x 297 x 6mm	11.3
Nominale lengte profieltegels*	per strekkende meter
152mm	6,6

*Gebaseerd op een voegbreedte van 2mm. Houdt u rekening met 5% snijverlies en breuk.

Buitenhoeken

Verkrijgbaar in links (L) en rechts (R) voor een professionele afwerking (alleen verkrijgbaar in Brilliant White en Colonial White).

PROFIELTEGELS OP BUITENHOEKEN AANBRENGEN

Om lijsttegels en andere profieltegels op een buitenhoek aan te brengen, moet een zijde van de tegel zorgvuldig in een hoek van 45° worden gezaagd met een carborundum- of diamantzaag. Hierdoor wordt het tegeloppervlak dat contact maakt met de muur korter.

VICTORIA-PROFIELEN

Victoria-profielen moeten niet worden gebruikt op een houten oppervlak. De profielen kunnen barsten door het uitzetten en krimpen van het hout.

GOUDEN EN PLATINA TEGELS EN LIJSTWERK

Wees voorzichtig met het zetten en voegen van tegels en lijstwerk, waaronder die met een kostbare metalen afwerking.

N.b.: Raadpleeg de installatieaanwijzingen op www.originalstyle.com/fixing.html voorafgaand aan het zetten van tegels/lijstwerk met een kostbare metalen afwerking.

Wij raden aan geen zuurhoudende schoonmaakmiddelen te gebruiken aangezien sommige tegels daar op reageren en het karakter van de tegels veranderen. We raden alleen het gebruik van een pH-neutraal reinigingsmiddel aan. Gebruik geen bijtende schoonmaakmiddelen of -materialen op tegels of lijstwerk, waaronder die met een kostbare metalen afwerking.

BELANGRIJKE Informatie

MASTERPIECE TEGELS

Masterpiece tegels zijn verkrijgbaar in twee opties:

- met haakjes aan de achterkant ('WB' maakt deel uit van de productcode)
- met een gladde achterkant

Met haakjes

Dankzij de haakjes kunnen de Masterpiece tegels aan een muur worden opgehangen, net als een foto. Dit betekent dat ze op plekken als badkamers, keukens, kasten en boven openhaarden kunnen worden gebruikt, in tegenstelling tot normale ingelijste foto's, die beschadigd kunnen raken door stoom, vochtigheid, warmte of ultraviolet licht.

Gladde achterkant

De optie met een gladde achterkant betekent dat de Masterpiece tegels geschikt zijn voor installatie samen met andere tegels. Er zijn passende frames in Brilliant White, Colonial White en Black voor de Masterpieces van Alma-Tadema, Rafael, Botticelli en Monet, en passende Weense frames en hoeken in Gold, Antique Gold, Platinum en Black voor het Masterpiece van Klimt. De framesets bestaan uit de Weense frames en hoeken, die speciaal zijn ontworpen om aan te sluiten op de Masterpiece tegels en die de verschillen in diktes tussen deze en de veldtegels van 5-12mm overbruggen.

Masterpiece tegels en -frames zetten

We raden ten eerste aan dat de Masterpiece tegels en -frames van Original Style worden geïnstalleerd door een ervaren tegelzetter. Masterpiece tegels moeten altijd met de grootste voorzichtigheid worden gehanteerd. Masterpiece tegels kunnen per stuk tot aan 7kg wegen en persoonlijk letsel veroorzaken als ze vallen. Masterpiece tegels hebben een absorptiecapaciteit voor water van minder dan 3 procent. Het is belangrijk dat de aanwijzingen van de lijm- en voegmiddelproducent te allen tijde worden opgevolgd.

N.b.: Raadpleeg de installatieaanwijzingen op www.originalstyle.com/fixing.html voorafgaand aan het zetten van de Masterpiece tegels.

Reinigen

Original Style Masterpiece-tegels moeten, net als normale geglaazuurde muurtegels, worden afgespoeld met schoon water en worden afgedroogd met een zachte, droge doek.

Raadpleeg het onderdeel Masterpiece Tiles and Frames van de Original Style Fixing Guide (www.originalstyle.com/fixing.html) voor volledige tegelinstructies.

Volg in de Verenigde Staten de aanbevelingen van een betrouwbare lijmfabrikant en werk altijd conform de specificaties van de American National Standards Institute (ANSI) zoals beschreven in het Handbook for Ceramic Tile Installation dat is gepubliceerd door de Tile Council of America. Nuttige links: www.ctoa.org, www.tileusa.com.

FOTOMATERIAAL

Door kleine verschillen in de studiobelichting en de drukinkten, kunnen de in deze brochure getoonde kleuren licht afwijken van de werkelijke kleuren van de tegels. Vraag uw Original Style-detailhandelaar altijd om u een monster te tonen.

BEPERKING VAN AANSPRAKELIJKHEID

Original Style is niet aansprakelijk voor de onjuiste installatie van zijn producten. In het geval van enige claim in verband met de tegels zelf is de wettelijke aansprakelijkheid van Original Style voorzover maximaal is toegestaan op grond van toepasselijk recht beperkt tot het vervangen van het product of het terugbetalen van de kosten van het product. Original Style is in geen geval aansprakelijk voor gevolgschade of indirecte schade. Klachten moeten binnen zeven werkdagen na ontvangst van de tegels worden gemeld. De tegels moeten voor installatie worden gecontroleerd en claims worden niet meer in overweging genomen nadat de tegels zijn geïnstalleerd.

Door installatie accepteert u de kwaliteit, kleur, maten, textuur en kleurnuances van de tegels. Original Style garandeert dat de tegels voldoen aan hun beschrijving en geschikt zijn voor hun doel. Original Style biedt geen andere uitdrukkelijke of impliciete garanties voor de geschiktheid of gepastheid van de producten voor specifieke installaties. We verlenen geen garanties, uitdrukkelijk noch impliciet, voor slijtagebestendigheid of onderhoudsprocedures.

We wijzen u erop dat bepaalde zuurhoudende schoonmaakmiddelen kunnen reageren met sommige tegels en het karakter ervan kunnen wijzigen.

ВАЖНАЯ информация

Цветовая палитра

Цветовая палитра – характерная особенность настенной плитки из коллекции Artworks. Рекомендуем раскладывать плитку перед укладкой, а лишь затем закреплять, это позволит добиться наиболее эстетически приятного цветового соответствия.

Разница между отдельными партиями может быть существенной, поэтому мы рекомендуем приобрести всю необходимую плитку одновременно. Мы не принимаем претензии, связанные с цветовым соответствием возникшие после укладки плитки.

Стандартные размеры

В данной брошюре указаны стандартные размеры, которые могут незначительно меняться в пределах, предусмотренных признанными на международном уровне стандартами. Просьба обратить внимание, что поскольку плитки литые, а не прессованные из сухого порошкообразного материала, их размеры могут отличаться. В соответствующих случаях плитки Original Style производится согласно требованиям стандарта BS EN14411.

Царапины

Плитку необходимо выбирать с учетом условий ее применения. Представленная в данной брошюре настенная плитка не предназначена для использования на поверхностях, подвергающихся интенсивному износу. Ошибочный выбор плитки может привести к порче глазури, а именно царапинам и потёртостям.

Трещины и плитка с кракелюрами

На глянцевой поверхности плитки со временем могут образоваться трещины. Гарантии на такие случаи не предоставляются. Плитку Metro с кракелюрами необходимо герметизировать. Плитку с кракелюрами не рекомендуется использовать в непосредственной близости от душа с повышенным давлением воды. См. Руководство по укладке на сайте www.originalstyle.com/fixing.html

Глазурь на медной основе

Плитка Victorian Green покрыта глазурью на медной основе, которая способна выцветать даже в присутствии очень слабых растворов кислоты, которые используются в домашних условиях. Чтобы избежать выцветания, плитку следует мыть только чистой водой, а затем незамедлительно вытирать насухо. Такую плитку запрещено использовать во влажных помещениях, то есть в душевых, вокруг ванны или раковины.

Пригодность

Настенная плитка

Настенная плитка Artworks не предназначена для рабочих поверхностей, полов или использования на открытом воздухе. Плитку Artworks необходимо применять только в помещениях, включая душевые. Это не включает плитку Victorian Green, которая способна выцветать даже в присутствии очень слабых растворов кислоты, которые используются в домашних условиях. Чтобы избежать выцветания, плитку следует протирать только чистой водой, а затем незамедлительно вытирать насухо. Такую плитку запрещено использовать во влажных помещениях, то есть в душевых, вокруг ванны или раковины.

Ввиду их особенностей, бордюры Albert и Victoria не рекомендуется использовать для стен, которые способны оседать со временем. Кроме того, при их заполнении важно избежать попадания влаги на обратную сторону рамы, поскольку это может привести к образованию трещин.

Обратная сторона бордюров может различаться. Это не влияет на их укладку. Мы не можем гарантировать глазурованное покрытие боковых углов профилей, представленных на стр. 68.

Напольная плитка

В данной брошюре также представлена мозаичная плитка, пригодная для покрытия полов как на открытом воздухе, так и в помещениях, включая душевые и ванные комнаты. Дополнительная информация представлена в Руководстве по укладке на сайте www.originalstyle.com/fixing.html.

Плитка Victorian Floor Tiles (описанная в данной брошюре) пригодна для покрытия полов как в помещении, так и на открытом воздухе. Полная информация о размерах, пригодности и особенностях установки представлена в Руководстве по напольной плитке Victorian Floor Tiles на сайте www.originalstyle.com/vft-fixing.html

ВАЖНАЯ информация

Сколько понадобится плиток?

Стандартный размер плитки*	на кв. м
Фоновая плитка 152 x 152 x 7 мм	43
Половинчатая плитка 152 x 75 x 7 мм	86
Плоская плитка 152 x 75 мм	86
Мозаичные полы	
292 x 292 x 6 мм	11.7
292 x 310 x 6 мм	11
297 x 257 x 6 мм	13.1
297 x 297 x 6 мм	11.3
Стандартная длина бордюров*	на погонный метр
Плинтус 152 мм	6,6

* При условии, что межплиточное расстояние составляет 2 мм. Просьба учесть дополнительные 5 процентов на брак.

Острые углы

В наличии левый (Л) и правый (П), что позволяет обеспечить профессиональную отделку (только для оттенков Brilliant White и Colonial White).

Клеящие и затирочные материалы

Исключительно важно использовать надлежащий клеящий материал, который соответствует субстрату плитки. Для плиток и бордюров Artworks, которые укладываются на гипсокартон или оштукатуренные стены, мы рекомендуем использовать плиточные клеи D1 или D2. Для другого типа субстрата может потребоваться использование эластичного клея на цементной основе. Рекомендуется обратиться за консультацией к поставщику плитки или производителю клеящих материалов. Необходимо постоянно использовать клеящие и затирочные материалы высокого качества, а также соблюдать рекомендации производителей касательно пригодности таких материалов для конкретного вида плитки, способов укладки и субстрата. При укладке плитки любого типа швы необходимо затирать водонепроницаемым заполнителем; в противном случае плитка может поглощать влагу, что приведет к образованию пятен на глазурованной поверхности. В среднем межплиточное расстояние должно составлять как минимум 2 мм, что позволит обеспечить допуск на разницу в размерах плитки. При установке душа с повышенным давлением воды следует использовать эпоксидный заполнитель.

Не следует производить укладку плитки Original Style непосредственно на влажный цементный или цементно-песчаный раствор. Исключительно важно соблюдать указания производителей клеящих и цементирующих материалов относительно возможности применения этой продукции. При возникновении сомнений просьба свериться с номенклатурой производителя затирочного/клеящего материала. Компания Original Style не предоставляет гарантий пригодности клеящих и затирочных материалов, которые производятся третьей стороной.

Герметизация швов

При любых видах установки, особенно при установке душевых кабин, швы необходимо заделать водонепроницаемым заполнителем, например, PCI Aquafug или заполнителем эпоксидного типа. Межплиточные швы и душевые поддоны следует герметизировать с помощью силикона. В противном случае плитка может поглощать влагу, что приведет к образованию пятен на прозрачной глазурованной поверхности.

Укладка литой плитки на усенки

Для укладки карнизной или иной литой плитки на усенки необходимо осторожно соединить один конец плитки под углом 45° с помощью карбоунда или алмазного режущего диска. Это приведет к сокращению площади поверхности плитки, соприкасающейся со стеной.

Бордюры Victoria

Бордюры Victoria не предназначены для использования на деревянных поверхностях, поскольку деревянные материалы расширяются под воздействием температуры, что может привести к образованию трещин на плитке.

Плитки и бордюры с золотым и платиновым

покрытием

При укладке плиток и бордюров, имеющих, в частности, покрытие драгоценными металлами, необходимо соблюдать осторожность.

Примечание: перед укладкой плиток/бордюров, покрытых драгоценными металлами, рекомендуется ознакомиться с Руководством по укладке на сайте www.originalstyle.com/fixing.html

Просьба обратить внимание, что мы не рекомендуем использовать чистящие средства на кислотной основе, поскольку это может привести к химической реакции и изменению свойств плитки. Мы рекомендуем использовать только чистящие средства с нейтральным показателем pH. Следует избегать использования абразивных средств и материалов при чистке всех плиток и бордюров, включая покрытые драгоценными металлами.

Плитка Masterpiece

В наличии два вида плитки Masterpiece:

- со скобами на обратной стороне (с литерой WB в артикуле);
- с гладкой обратной стороной.

Скобы

Благодаря скобам плитку Masterpiece можно подвешивать на стены, как картины. Это означает, что плитку можно использовать в таких помещениях, как душевые, кухня и оранжевая, а также над каминами, поскольку такая плитка, в отличие от обычных картин, не подвергается воздействию пара, влажности, высокой температуры и ультрафиолетовых лучей.

Гладкая обратная сторона

Плитка Masterpieces с гладкой обратной стороной предназначена для создания декоративных панно. В наличии рамки оттенков Brilliant White, Colonial White и Black, подходящие для панно, выполненных по оригиналам картин Алма-Тадема, Рафаэля, Боттичелли и Моне, а также венские рамки и уголки оттенков Gold, Antique Gold, Platinum и Black для панно по мотивам картин Климта. Коллекция включает венские рамки и уголки, созданные специально для плитки Masterpiece. Использование рамок и уголков позволяет скрыть разницу в толщине плитки для панно и фоновых плиток, которая может составлять от 5 до 12 мм.

Укладка плитки и рам Masterpiece

Настоятельно рекомендуем, чтобы укладка плитки и рам коллекции Masterpiece компании Original Style производилась профессиональным плиточником. С плиткой Masterpiece необходимо обращаться осторожно. Вес плитки может составлять до 7 кг (15,4 фунта). При падении такая плитка может нанести травму. Водопоглощающая способность плитки Masterpiece составляет менее 3 процентов. Исключительно важно постоянно соблюдать указания производителей клеящих и цементирующих материалов. Примечание: перед укладкой плитки Masterpiece необходимо ознакомиться с инструкциями на сайте www.originalstyle.com/fixing.html

Плитку Masterpiece компании Original Style следует мыть водой и вытирать насухо с помощью мягкой обтирочной ткани так же, как и обычную глазурованную настенную плитку. Полные инструкции представлены в разделе «Плитки и рамки Masterpiece» в Руководстве по укладке Original Style на сайте www.originalstyle.com/fixing.html

Фотографии

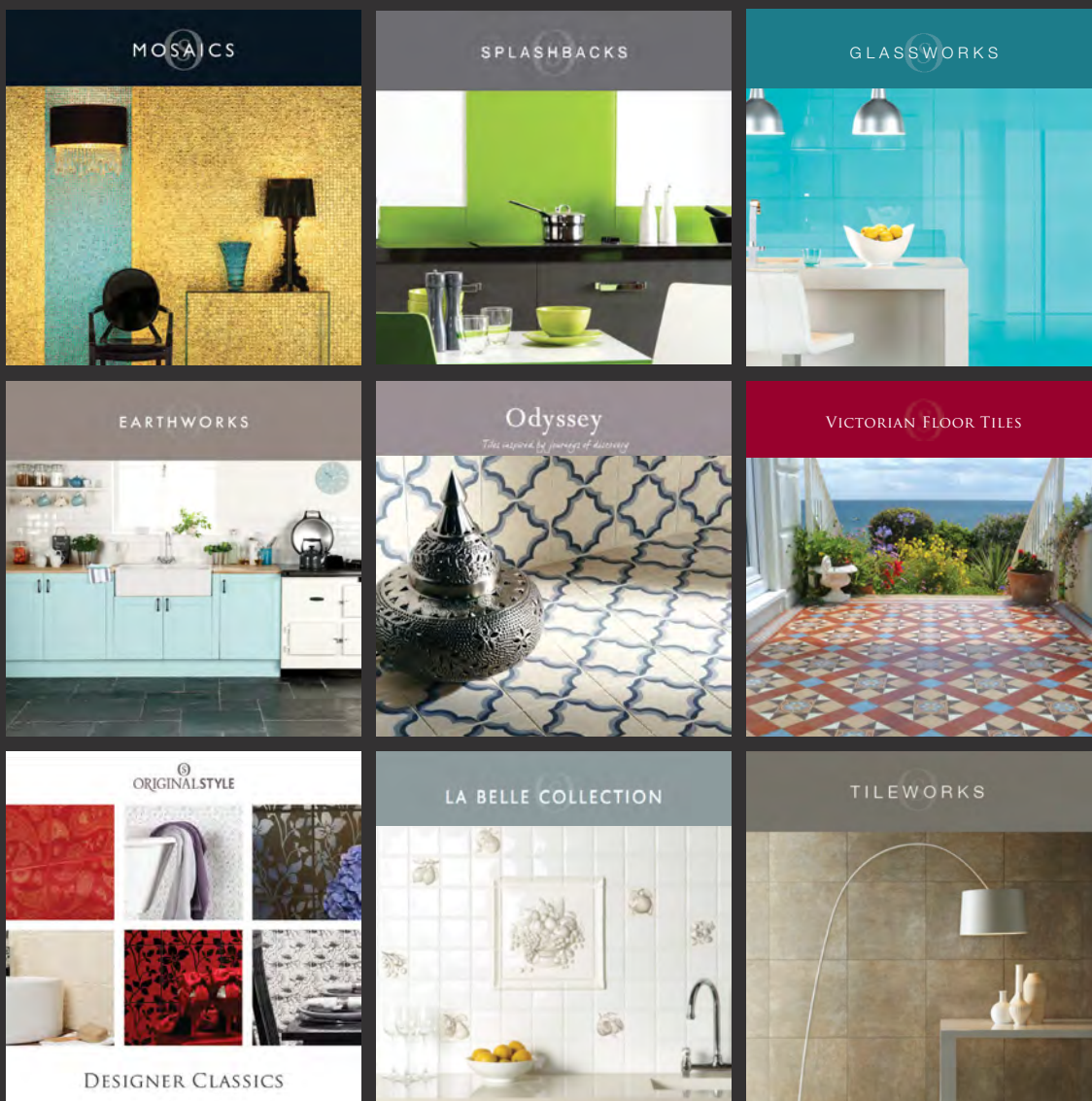
С учетом освещения в студии и типографической краски, цвет плитки на фотографиях, представленных в данной брошюре, может незначительно отличаться от фактического цвета плитки. Рекомендуется потребовать образец плитки у поставщика Original Style.

Ограничение ответственности

Компания Original Style не несет ответственности за дефекты при установке ее продукции. При возникновении претензий относительно качества плитки, ответственность компании Original Style в установленных законом случаях ограничена либо заменой товара, либо возмещением его стоимости, и не распространяется на возмещение косвенных убытков. О претензиях необходимо сообщать в течение 7 рабочих дней после получения плитки. Плитку следует проверить до ее установки. После установки плитки претензии не принимаются.

Просьба обратить внимание, что установка плитки означает отсутствие претензий к ее качеству, цвету, размерам, текстуре и оттенкам. Компания Original Style гарантирует, что плитка соответствует ее описанию и пригодна для использования в надлежащих целях. Компания Original Style не предоставляет ни прямых, ни косвенных гарантий соответствия или пригодности товара для конкретных видов установок. Мы не обеспечиваем ни прямые, ни косвенные гарантии износоустойчивости.

Просьба отметить, что использование определенных чистящих средств на кислотной основе способно привести к возникновению химической реакции и изменению свойств плитки.



Original Style also produce other ranges of ceramic tiles, natural stone, Mosaics and Victorian floor tiles. Please ask your retailer for copies of these brochures. Please return this brochure to your Original Style stockist after use.

The 'Original Style' logo is a registered trade mark of Original Style Ltd.
Original Style Limited is registered in England number 3018117. Registered Office:
Falcon Road, Sowton Industrial Estate, Exeter, Devon EX2 7LF, England

Your Original Style stockist

£2.00 €3.00 \$3.50

AWORKS4/12/12

GENERAL ENQUIRIES

Tel: +44 (0)1392 473004

Fax: +44 (0)1392 473014

UK SALES

Tel: +44 (0)1392 473000

Fax: +44 (0)1392 473010

USA SALES

Tel: 0 11 44 1392 473002

Fax: 1-866 811 6609

REST OF WORLD SALES

Tel: +44 1392 473001

Fax: +44 1392 473011

Email: info@originalstyle.com

Website: www.originalstyle.com

Printed using Vegetable inks